

Update and look back 2020 - 2021

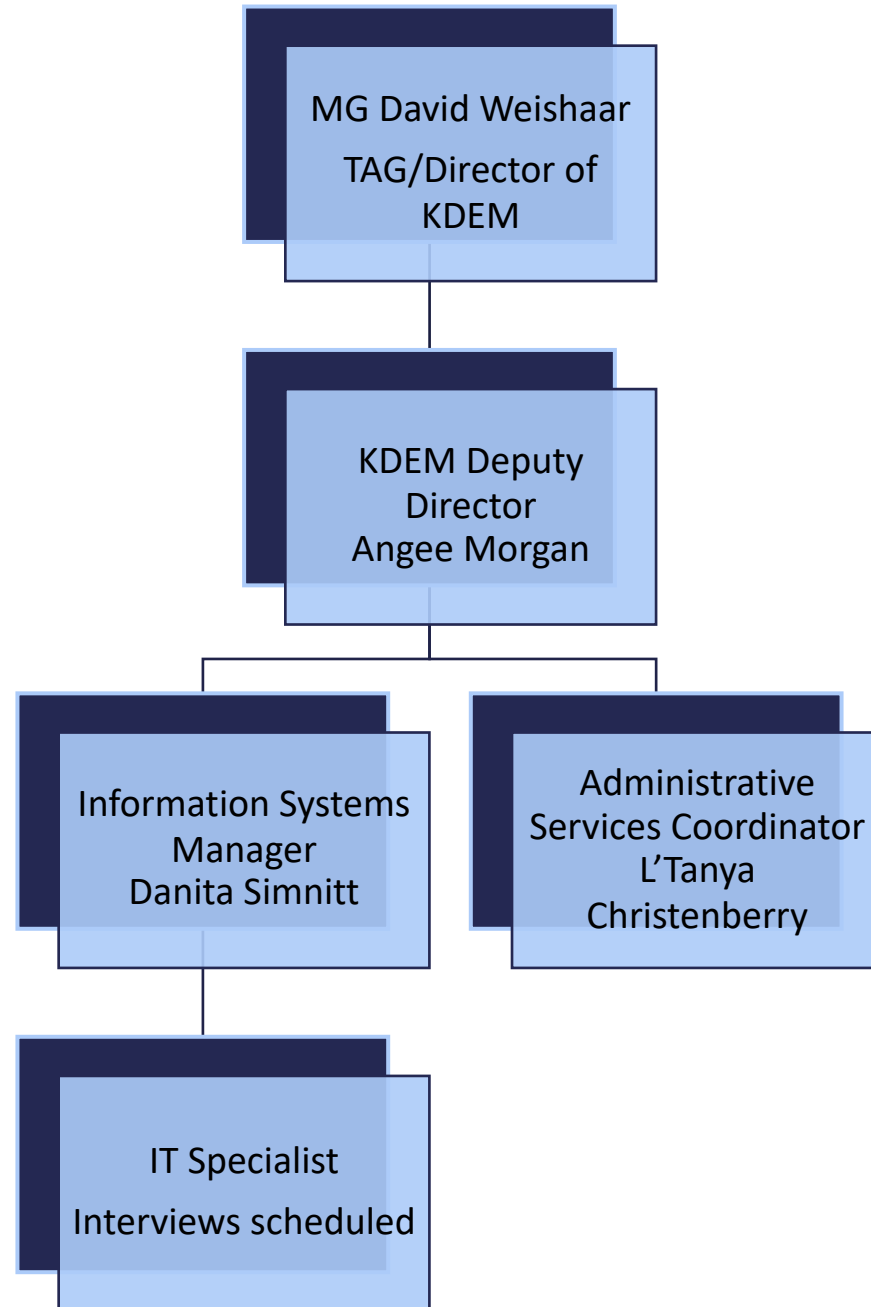
Angee Morgan, Deputy Director
Kansas Division of Emergency Management

Administration

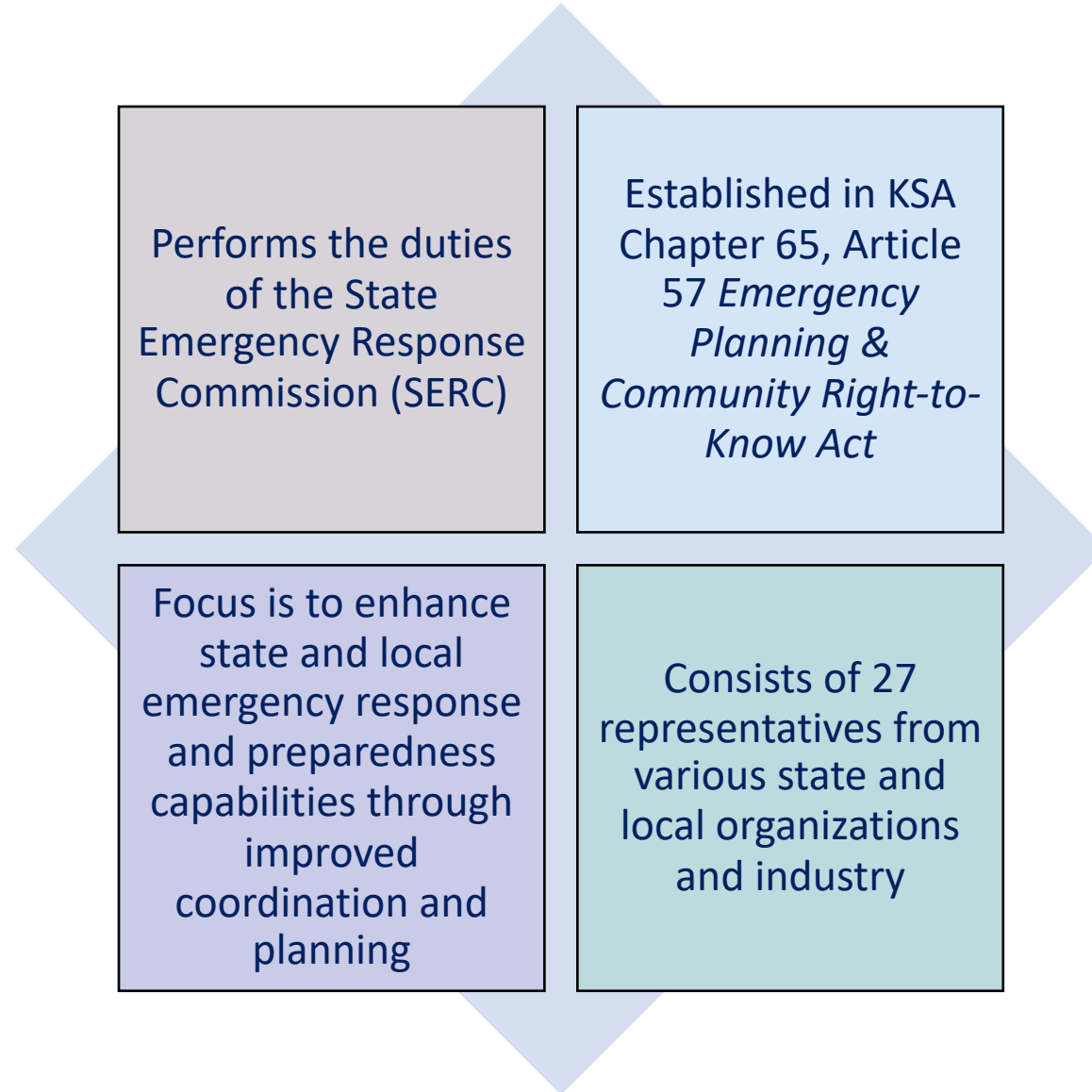
policy, administrative functions,
information management



KDEM Administration



Commission on Emergency Planning & Response



CEPR Chairperson & Vice

2020

Chuck Magaha

- Homeland Security Regional Councils

Martha Gabehart

- Individuals and Disabled

2021

Martha Gabehart

- Individuals & Disabled

Chuck Magaha

- Homeland Security Regional Councils

EMERGENCY MANAGEMENT

EMAP
Accredited

ACCREDITATION PROGRAM

Emergency Management Accreditation Program (EMAP)

Assessment completed by an independent non-profit organization

Standard-based voluntary assessment and peer review process

The EMAP Standards are a set of 65 standards by which programs that apply for EMAP accreditation are evaluated

Standard Areas

Program Management, Administration and Finance, Laws and Authorities

Hazard Identification, Risk Assessment and Consequence Analysis

Hazard Mitigation

Prevention

Operational Planning & Procedures

Incident Management

Resource Management, Mutual Aid & Logistics

Communications & Warning

Facilities

Training

Exercises, Evaluations and Corrective Action

Emergency Public Education & Information



Finance & Administration Section

fiscal, grants management,
reporting, monitoring, compliance

Fiscal & Administration Section



Responsibilities

- Ensure compliance with 2 CFR, Part 200
- Process purchase requests and vendor payments
- Oversee grant requirements such as monitoring, match certification and risk assessments

EMPG Waiver - 2020

Certification of an Emergency
Manager

*Requirement to obtain and
maintain a certification is
waived until January 1, 2023*



EMPG Waivers - 2021

- Certification of an Emergency Manager
 - Requirement to obtain and maintain a certification is waived until January 1, 2023.
- Exercises
 - Two for CY 2021
 - One exercise
 - Recommend completing **COVID19-Response Efforts – Local Program Evaluation Tool**
 - <https://www.kansastag.gov/KDEM.asp?PageID=193>
 - Integrated Preparedness Workshop (IPPW)
 - Establish the strategy and structure for an exercise program
 - Examine impacts, gaps, risks and improvement
 - If TEPW has already been completed it can be substituted for IPPW

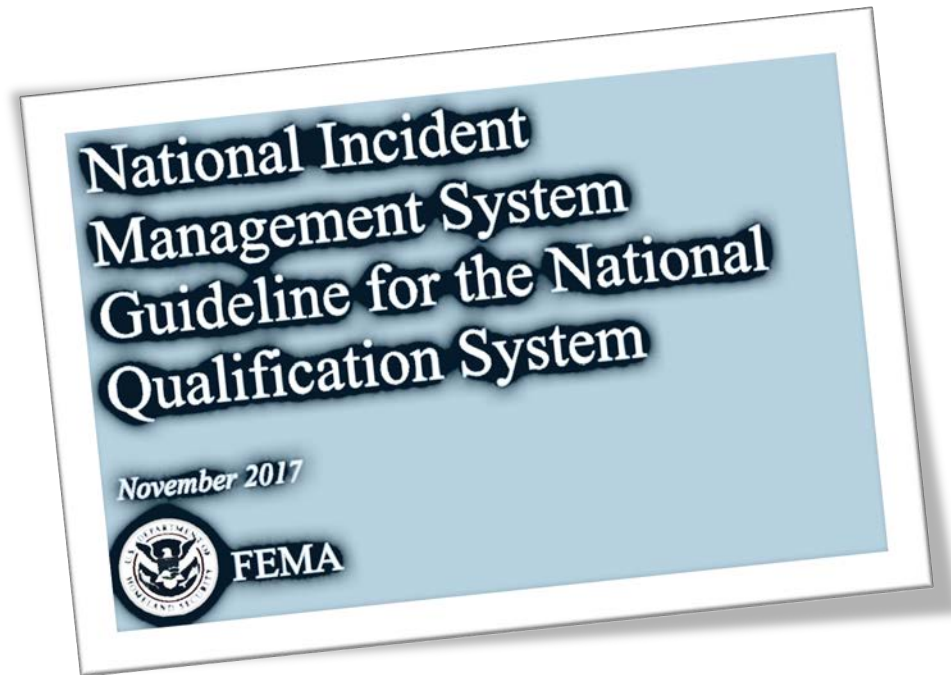
EMPG Requirements - 2022

requirements will be
reviewed after the first of
the year

CHECKLIST



Future EMPG Requirements



- National Qualification System (NQS)
 - ✓ Phased approach over three years
 - ✓ Beginning in FFY2022 States are to “work toward” full implementation
 - ✓ All jurisdictions must be compliant in FFY2023



Planning & Mitigation Bureau

plan development and maintenance,
plan approval, resource
management, mitigation activities,
GIS, consequence analysis



Bureau Director
advertised

Mitigation
Section

Planning
Section

Logistics
Section

Mitigation & Planning Bureau

Planning & Mitigation Bureau Geographic Information System Section

```
graph TD; A[GIS Section Chief  
Mike D'Attilio] --- B[GIS Specialist  
Luke Finley];
```

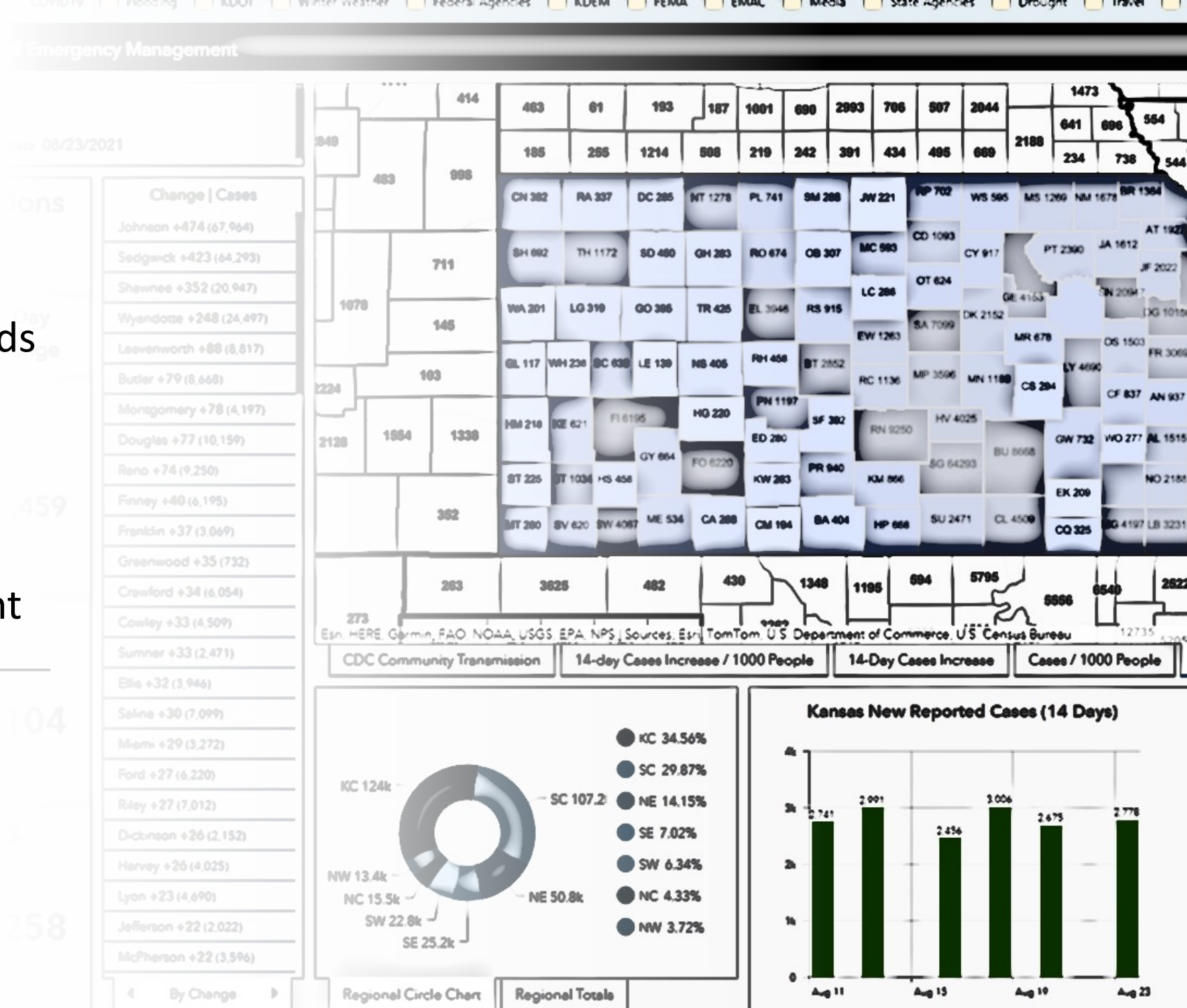
GIS Section
Chief
Mike D'Attilio

GIS Specialist
Luke Finley

GIS

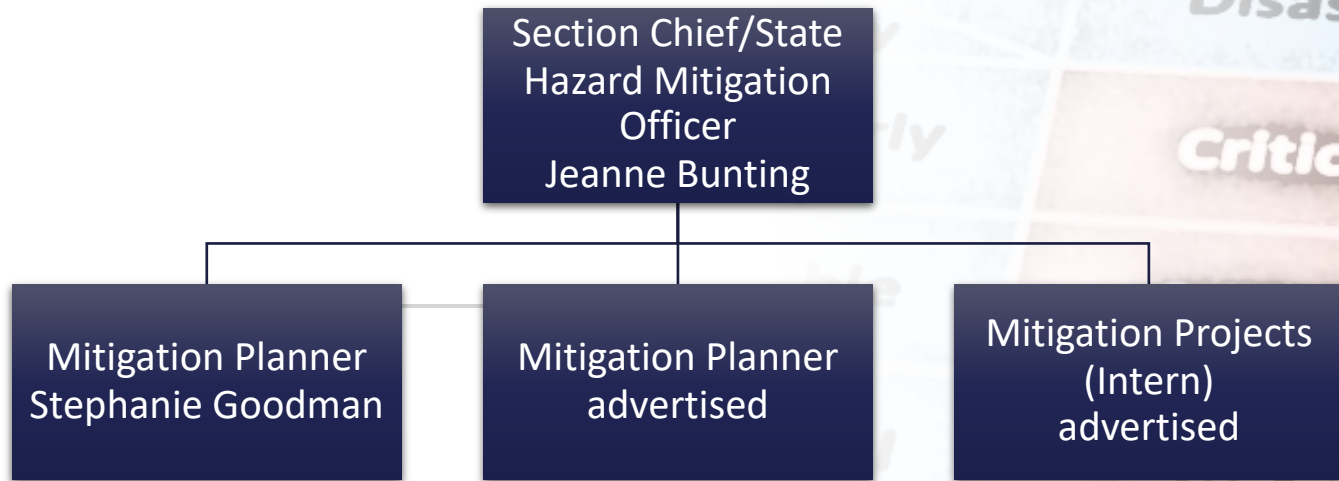
Developed various dashboards

- ✓ Flood
- ✓ Fire tracker
- ✓ COVID19
- ✓ Others under development



Hazard Mitigation Section

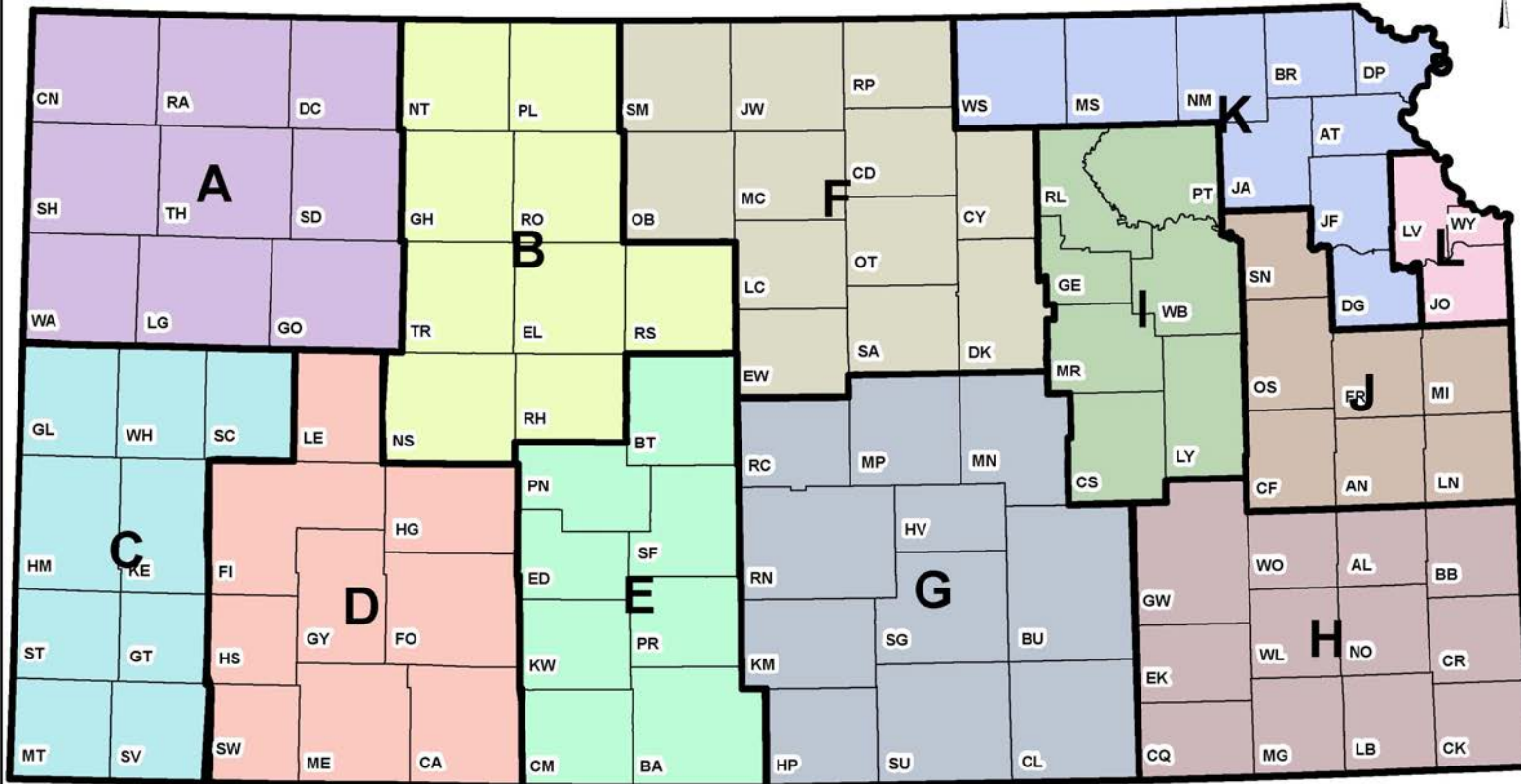
Risk Assessment



A Risk Assessment Matrix is displayed in the background. It is a grid with 'Severity' on the vertical axis and 'Likelihood' on the horizontal axis. The matrix is divided into colored cells representing different risk levels: Disaster (blue), High (light blue), Medium (light green), Critical (red), High (orange), Medium (yellow), and High (light yellow). A pen is visible in the bottom right corner, pointing towards the 'High' cell in the 'Medium' severity row.

Severity	Disaster	High	Medium
Critical	Critical	High	Medium
High	High	High	Medium
High	High	Medium	Medium

Regional Mitigation Regions



Regional Mitigation Plan Status

All Regions have updated Mitigation Plans



Division of Emergency Management

Date: 9/4/2019
Data Sources: KS Adjutant General, US Census Bureau
Document Path: R:\Projects\Emergency_Management\Mitigation\MitigationSubRegions_Status-2018-05-30.mxd

Hazard Mitigation Project Management

Hazard Mitigation Grant Program (HMGP)	Pre-Disaster Mitigation Grant Program (PDM) FY2019	Building Resilient Infrastructure & Communities (BRIC) FY2020	Flood Mitigation Assistance (FMA)
3 open disasters 17 open projects ≈\$12.8M portfolio management	3 approved projects ≈\$2,304,045 portfolio management	2 approved projects ~\$525,224	No current projects

Hazard Mitigation Funding Opportunities

DR-4504 - Covid 19 Pandemic

- \$9.004 million in funding available
- Letter of Intent (LOI) period is open until October 1, 2021

FY19 PDM

- Approved:
 - Anderson County Safe Room
 - USD 463 (Udall) Safe Room
 - Fanesteil Meats (Lyon County) Acquisition/Demo

FY20 BRIC

- Approved:
 - City of Atchison - River Road Stabilization project
 - Geary County - Hardened EOC

FY21 BRIC

- Open until December 31, 2021

Bureau Director

Planning
Section

Biological Planner
Derek
Montgomery

COOP Planner.
Nick Janeski

LEOP Planner
Austin Bork

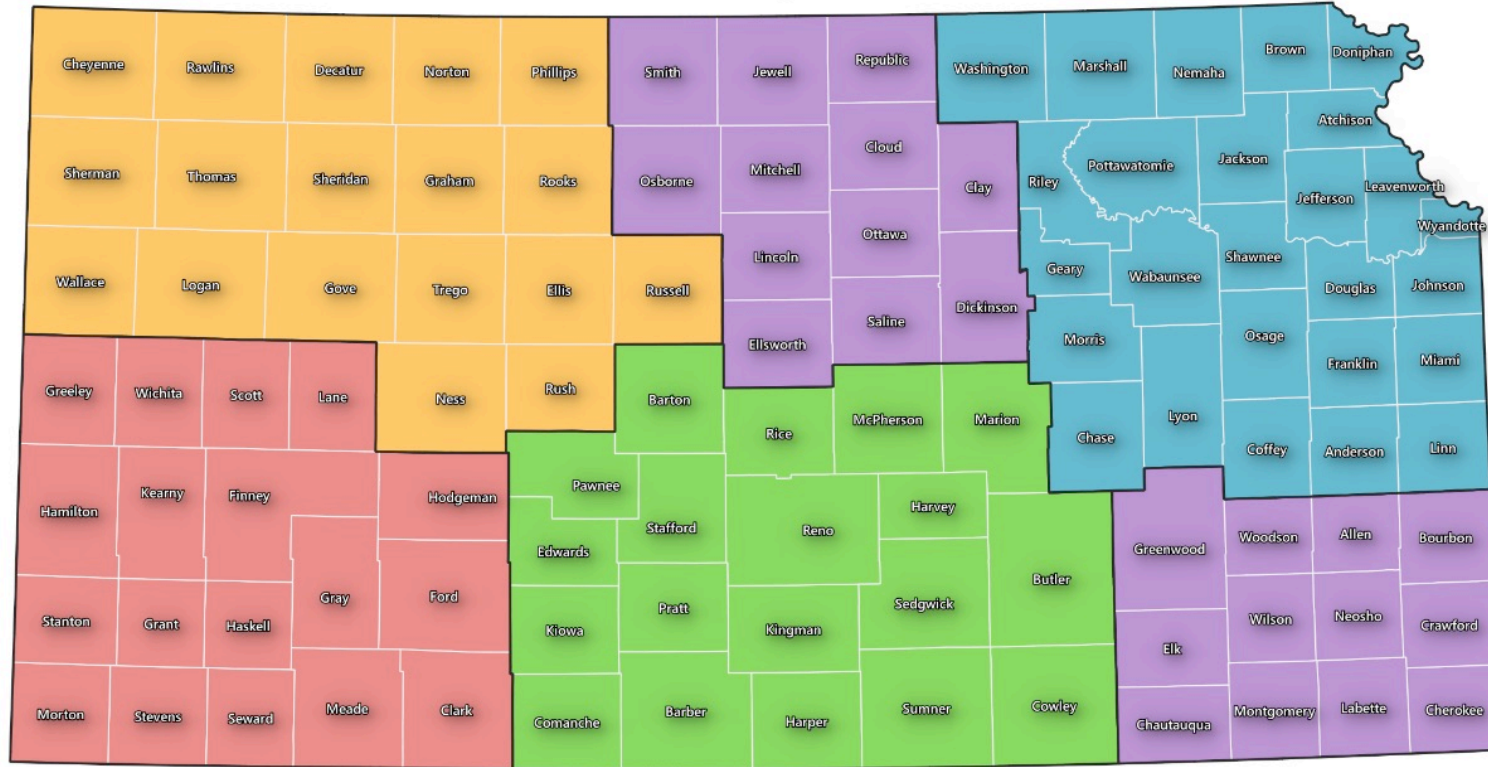
EOP Planner
Kyle Oneth



Planning Activities

- August 2019
 - Kansas Planning Standards Promulgated
- August 2020
 - A one-year extension was granted to incorporate KPS revisions into LEOPs
 - Deadline is December 1, 2021
- Years 2021-2028
 - Re-approval period – aligning to regional schedule

LEOP Regions



Regions

- Northeast and KC Metro
- North Central and Southeast
- Northwest
- South Central
- Southwest

Regionalization Benefits

Enhances technical support provided by KDEM



Enhances planning collaboration across disciplines



Aligns regional planning priorities



Regions can leverage other sources of regional funds for a planning project

Planning Resources

Additional
Training Materials

Subject Matter
Expert Interviews

✓ Posted in KansasPlanner

Planning Resources

Please join my meeting from your computer, tablet or smartphone.

<https://global.gotomeeting.com/join/978711269>

You can also dial in using your phone.

United States (Toll Free): [1 877 309 2073](tel:18773092073)

United States: [+1 \(646\) 749-3129](tel:+16467493129)

Access Code: 978-711-269

Every Tuesday from 0800-1200

Comprehensive Resource Management & Credentialing System (CRMCS)

Number of Responders

- 81,462 (+21%)

Number of Equipment

- 31,322 (+20%)

Number of Organizations

- 5,221 (+19%)

Number of Admin Users

- 2,580 (+18%)

Bureau Director

Logistics Section
Chief
Brian Rogers

Warehouse
Manager
Greg Barnes

Warehouse Staff
Jedediah Smith

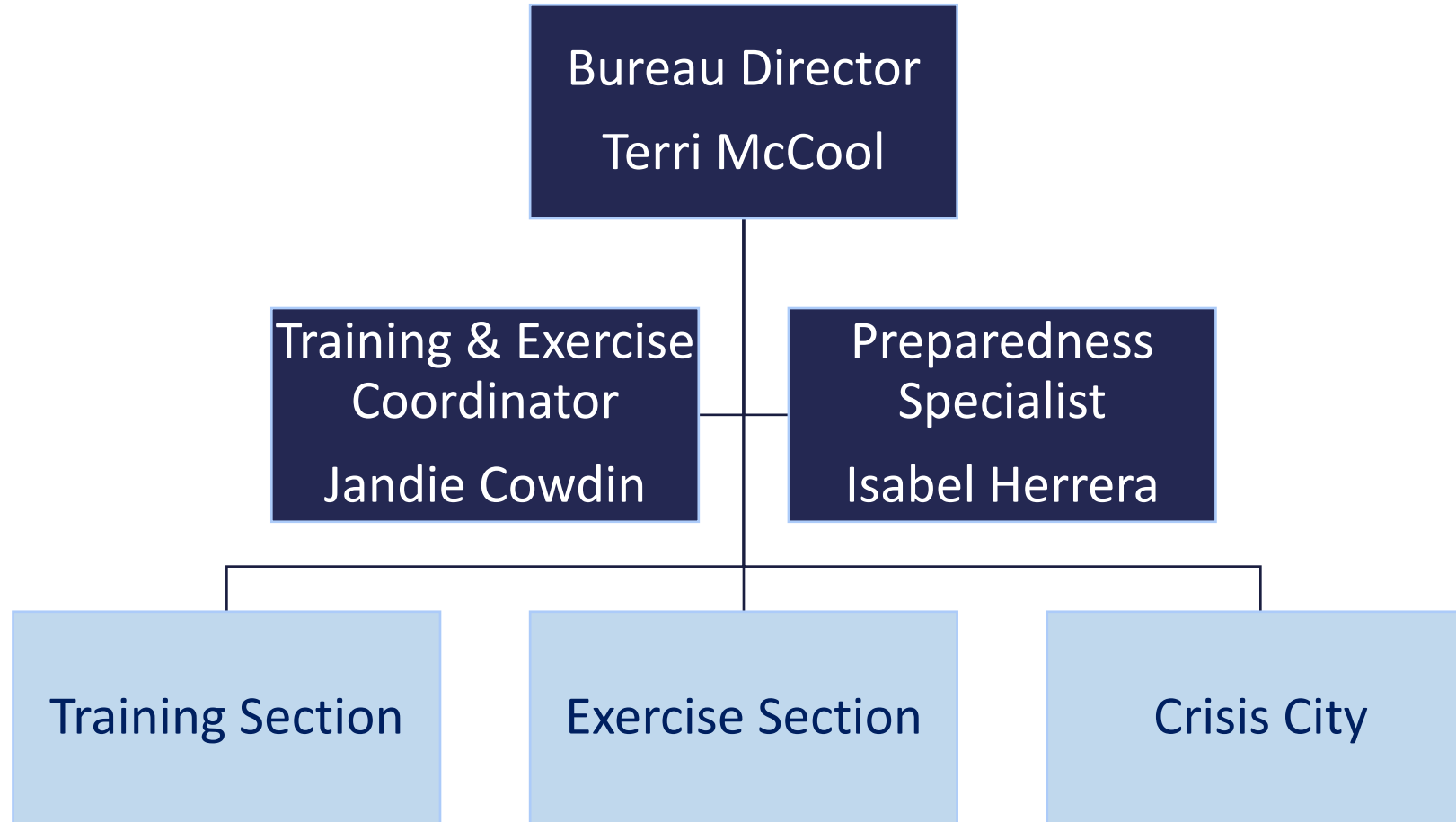
*Planning & Mitigation Bureau
Logistics Section Chief*

A man with a beard and glasses is seen from the side, wearing a headset with a microphone. He is sitting at a desk in what appears to be a call center or office. In front of him is a computer monitor displaying a software interface with a map of the United States. On the wall behind him is a sign that says "Shukriyyah! Asante! Merci! Thank you!".

Prevention & Preparedness Bureau

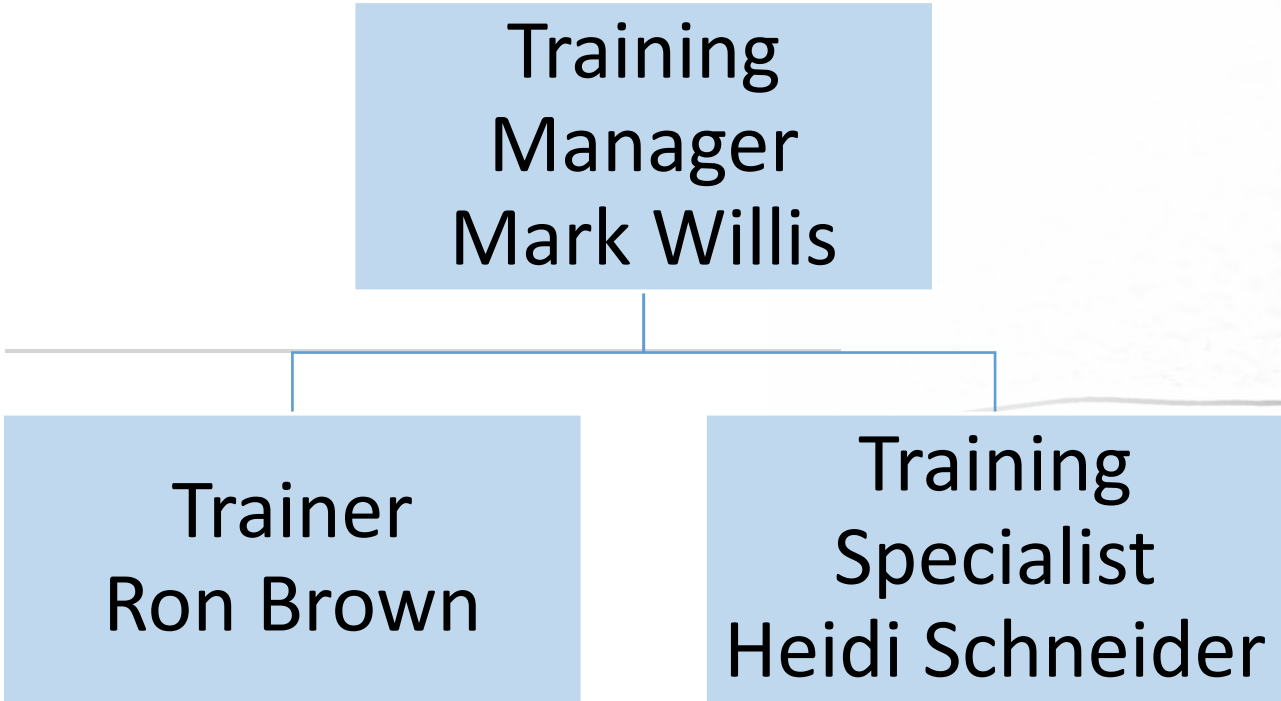
training, exercises, and improvement planning

Preparedness & Prevention Bureau





Prevention & Preparedness Bureau Training Section



Training
Manager
Mark Willis

Trainer
Ron Brown

Training
Specialist
Heidi Schneider

2020 Training

Disaster Preparedness for Health Care

Social Media strategies

Emergency Operations Center functions

COOP

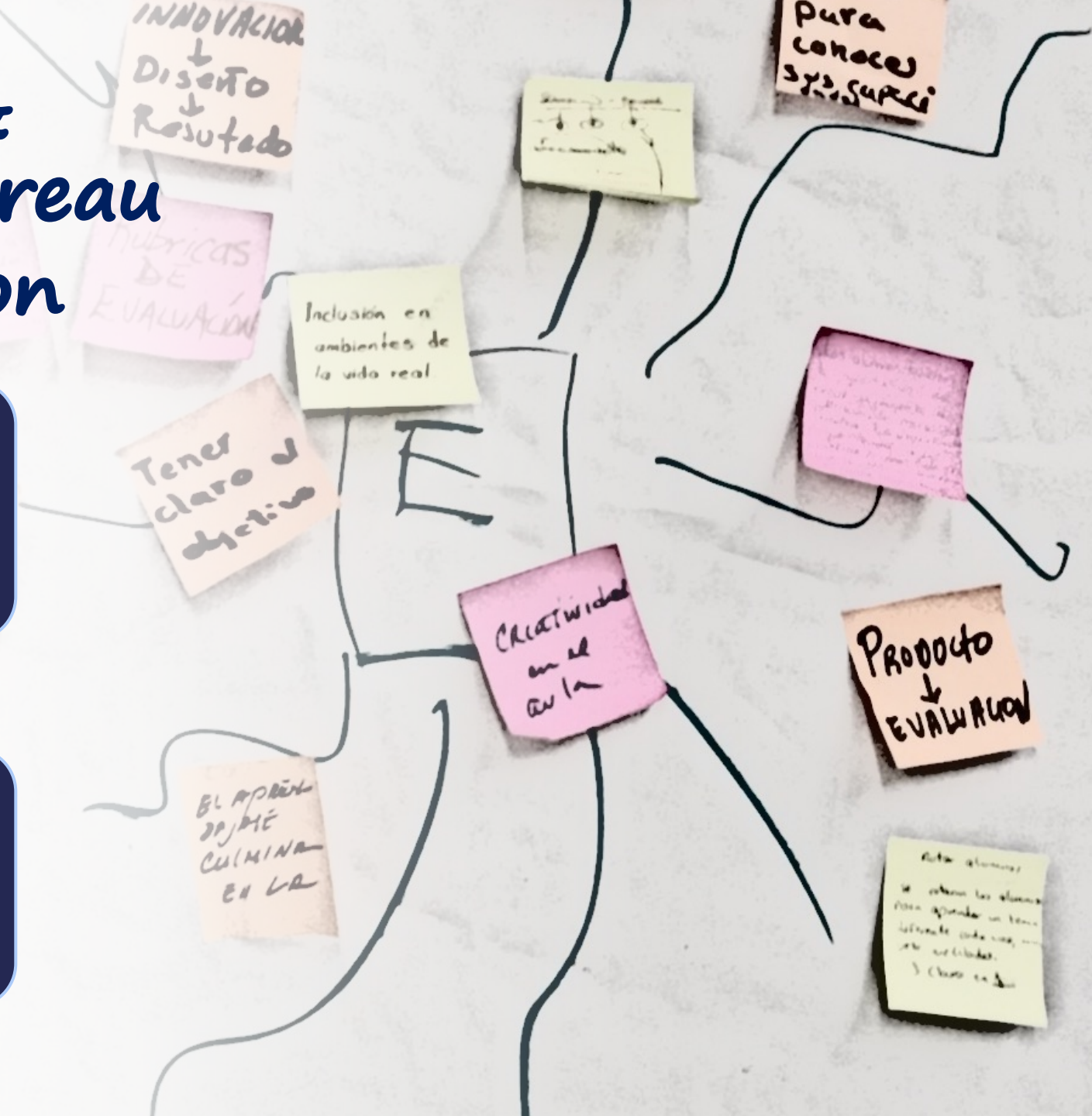
Local executive and senior official roles in
emergency management

Supervisor roles in incident management structures

Prevention & Preparedness Bureau Exercise Section

Exercise
Manager Robert
Cox

Exercise Officer
(employment
offered)



2020 Exercises

Communications Functional

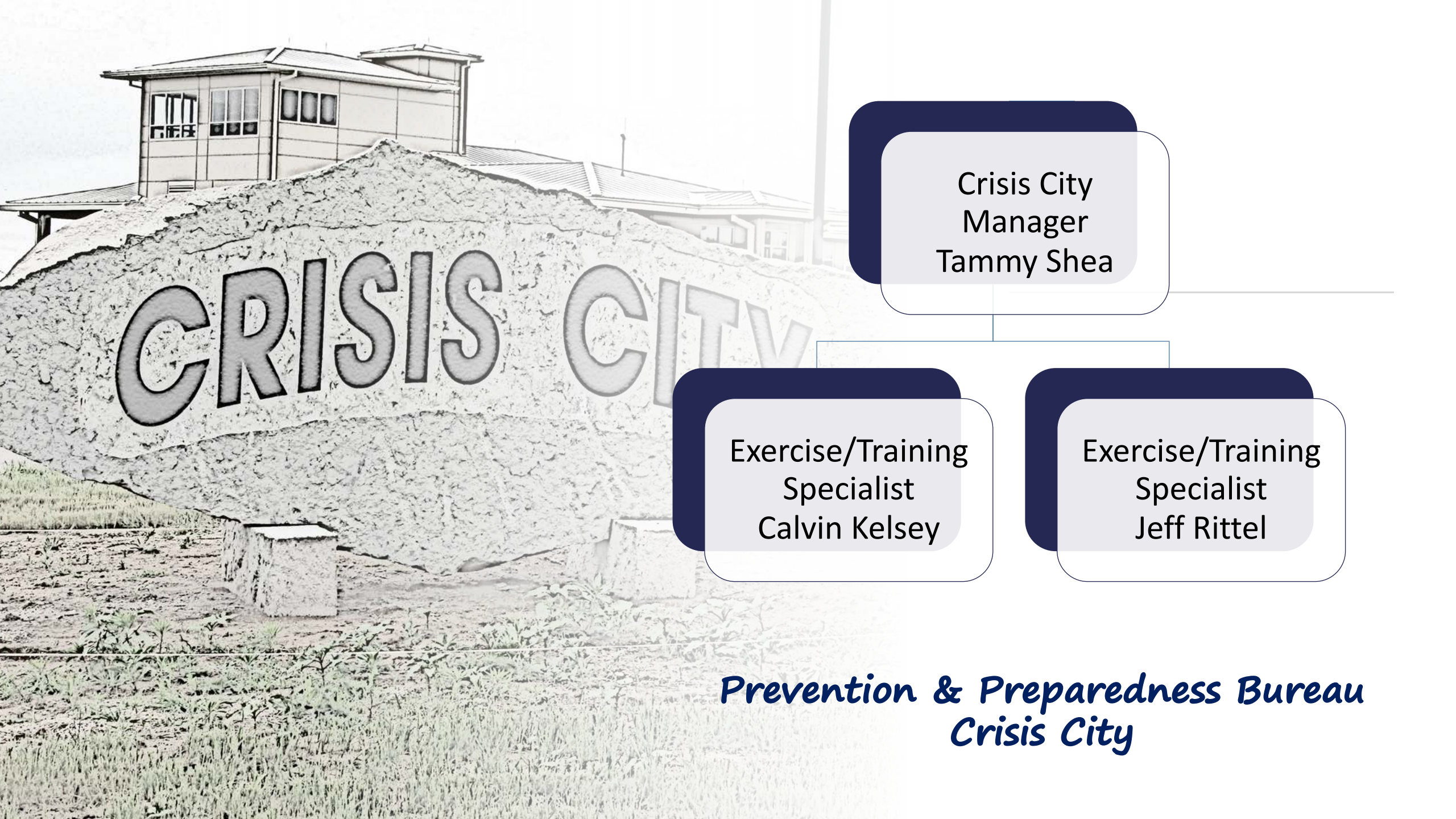
- Alternate communications – multi-access points/virtual

Vaccination Functionals

- Mobile Trailers
- Communications

Homeland Security Exercise & Evaluation Program (HSEEP)

- HSEEP training course (1)



Crisis City
Manager
Tammy Shea

Exercise/Training
Specialist
Calvin Kelsey

Exercise/Training
Specialist
Jeff Rittel

*Prevention & Preparedness Bureau
Crisis City*

Crisis City Events 2020

- ❖ 37 major events
- ❖ 8,000 hours of training

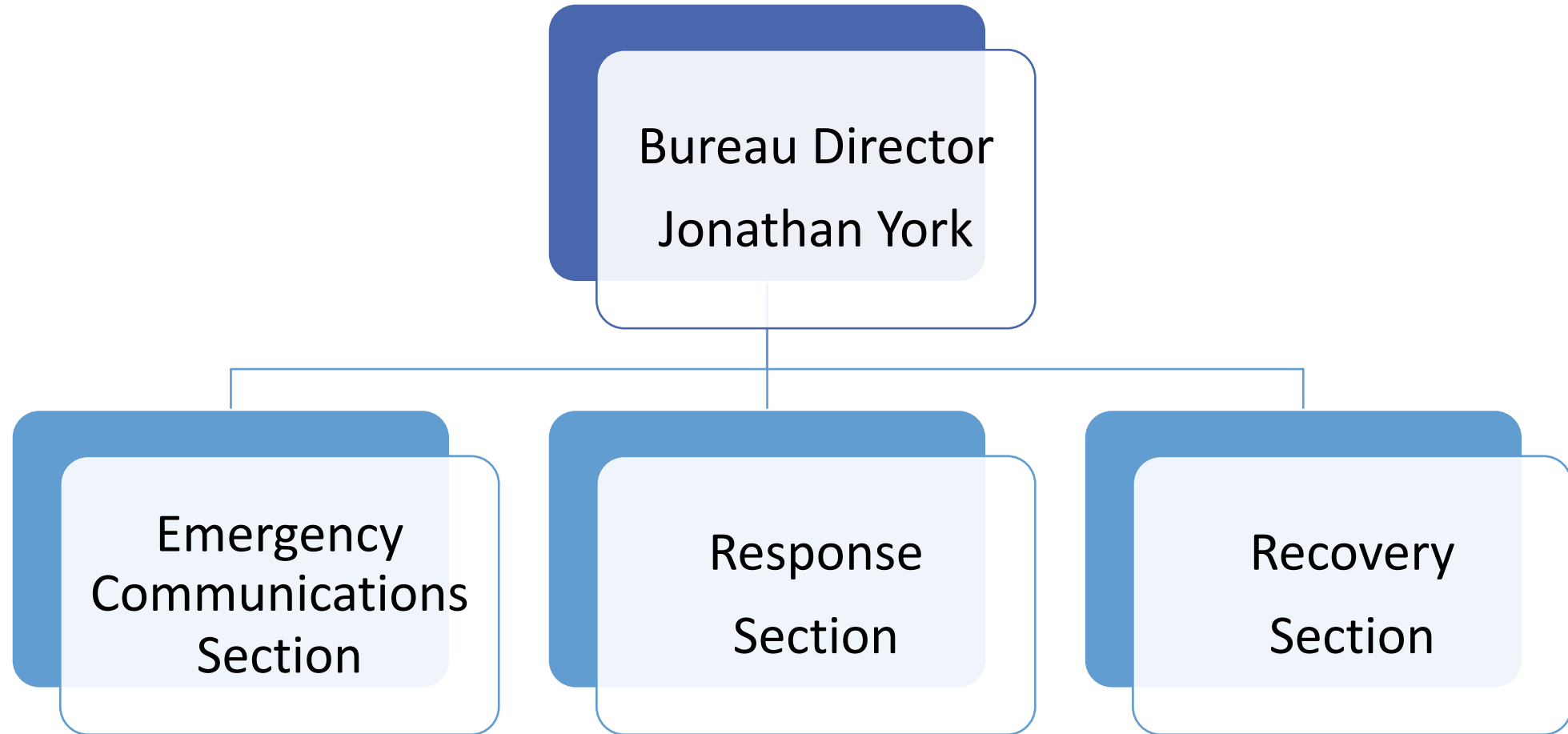




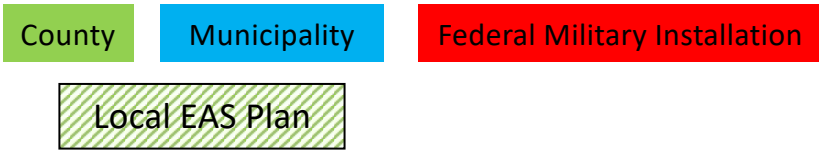
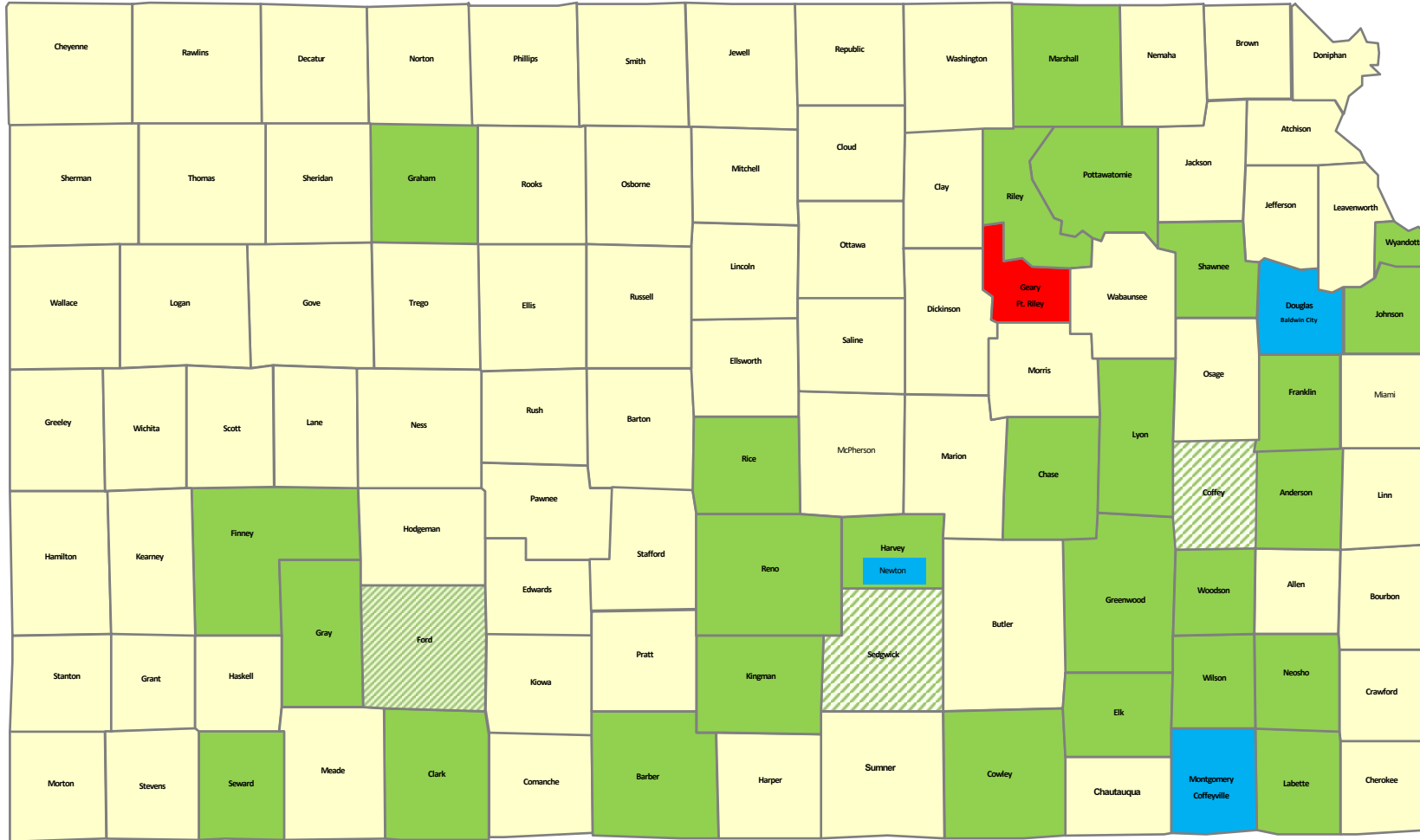
Response & Recovery Bureau

communications, SEOC
management, recovery activities,
public awareness, radiological, field
support

Response & Recovery Bureau



IPAWS Local Public Alerting Authorities





Emergency Management Assistance Compact

Mutual aid agreement between all 50 States
and 5 Territories

Mechanism to move personnel and
equipment to help disaster response and
recovery efforts

Legal binding contract agreement

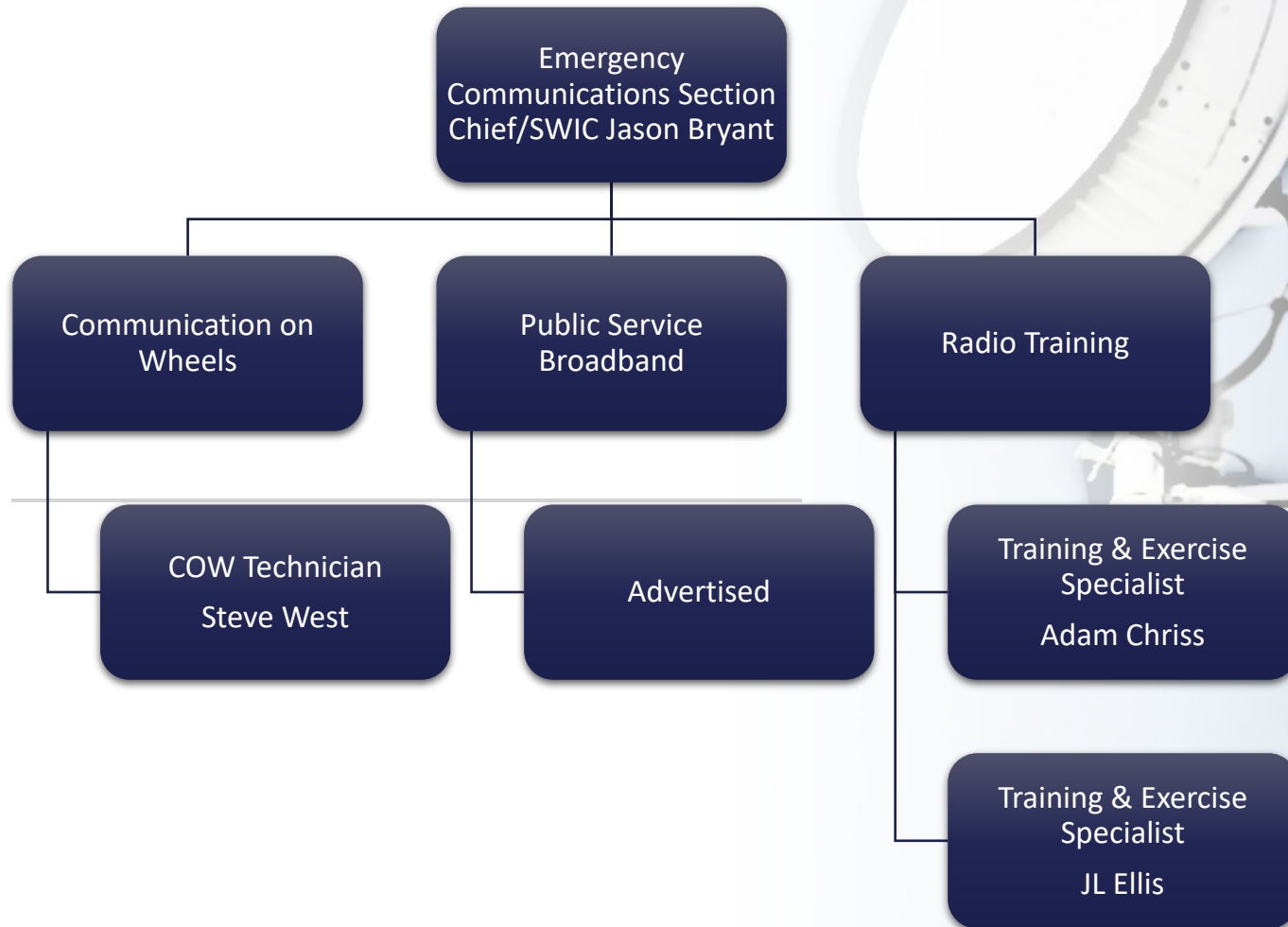
The background image shows a residential street scene. A fire truck is parked on the left side of the road. Several firefighters in full gear are standing around the truck, some appearing to be working on equipment. The street is lined with houses, and the sky is overcast. The image is faded and serves as a backdrop for the text.

EMAC

Assisting State for Hurricane Ida 2021

- Kansas National Guard to Louisiana
 - Engineering Units
 - Platoon for points of distribution and security
- Type I fire engines and crew to Louisiana
 - Johnson Co. Consolidated Fire District 2, Leawood FD, Lenexa FD, Olathe FD, and Wichita FD

Response & Recovery Bureau Emergency Communications Section



Communications Support Highlights



Communications exercise in Winter 2019



Supported 5 deployments of 800 MHz radios and FirstNet telephones



4 COW deployments to support local and state public safety communications



Supported two counties joining the Kansas Statewide Interoperability Communications System with infrastructure buildout



Updates to Mutual Aid Reference Guide, Kansas Field Operations Guide, and deployment of mobile KFOG app

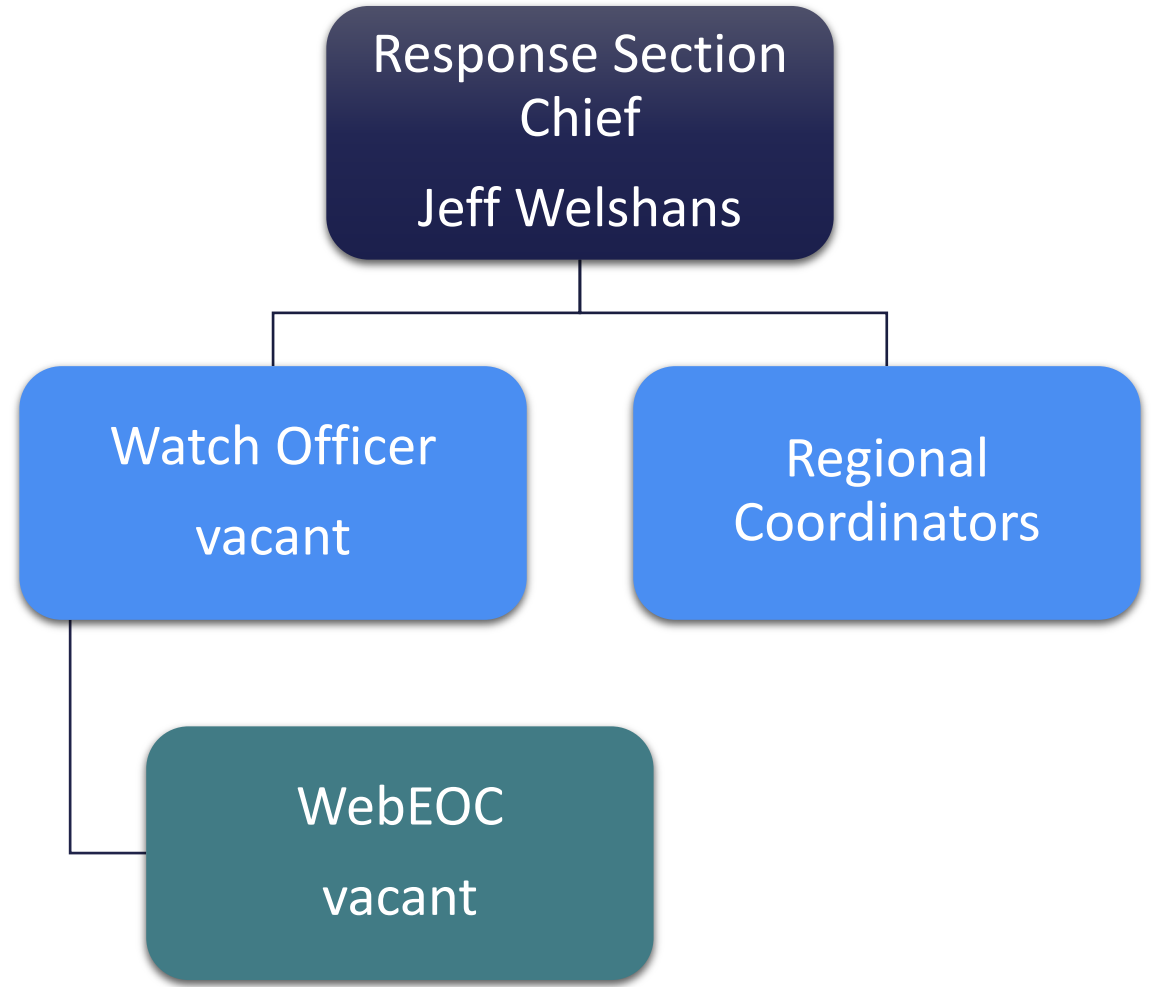
Notifications

System-wide Message

SEOC Main Number: 785-646-2000
KDEM Staff Duty Officer: (785) 291-3333 (option 2)
KDEM Main Fax: (785) 646-2001
KDEM SDO Email: ng.ks.ksamg.lst.kdem-sdo@mail.mil

SEOC Section E-mails:
Manager/Deputy Manager ng.ks.ksamg.lst.kdem-seoc-manager@mail.mil
Response Actions ng.ks.ksamg.lst.kdem-response@mail.mil
Communications Lead ng.ks.ksamg.lst.kdem-comms@mail.mil
Logistics Section ng.ks.ksamg.lst.kdem-logistics@mail.mil
Planning Section ng.ks.ksamg.lst.kdem-plans@mail.mil
Fiscal ng.ks.ksamg.lst.kdem-fiscal@mail.mil

angee.morgan
 Kansas Division
 of Emergency
 Management



Incident Support Program

Two ways to support counties impacted by a disaster:

1. **Incident Support Team:**

Provide assistance to the incident commander in the field.

2. **Emergency Operations Center Support Team:**

Provide assistance to emergency managers in the emergency operations center to support incident management.

Key Points

- Allows jurisdictions to maintain command and control of their own disaster by retaining key command and general staff positions within their jurisdiction
 - If a jurisdiction needs assistance filling a command or general staff position not a part of the incident support program, KDEM/SEOC can facilitate a mutual aid request on the jurisdiction's behalf through the Kansas Mutual Aid System
- Mission assigned through KDEM/SEOC
 - Personnel remain under the command and control of their home jurisdiction
 - Home jurisdiction will be reimbursed for salary, benefits, and per diem for meals if not provided.

Team Composition

Incident Support Team

- Deputy Incident Commander
- Liaison Officer
- Safety Officer
- Public Information Officer
- Deputy Operations Section Chief*
- Planning Section Chief*
- Logistics Section Chief*
- Finance & Administration Section Chief*

** and subordinate positions within major management function*

EOC Support Team

- Deputy EOC Manager
- Operations Section Chief*
- Planning Section Chief*
- Logistics Section Chief*
- Finance & Administration Section Chief*
- Liaison Officer
- Public Information Officer

** and subordinate positions within major management function*

*Governor Declarations/SEOC Activation
January 1 – December 31, 2020*



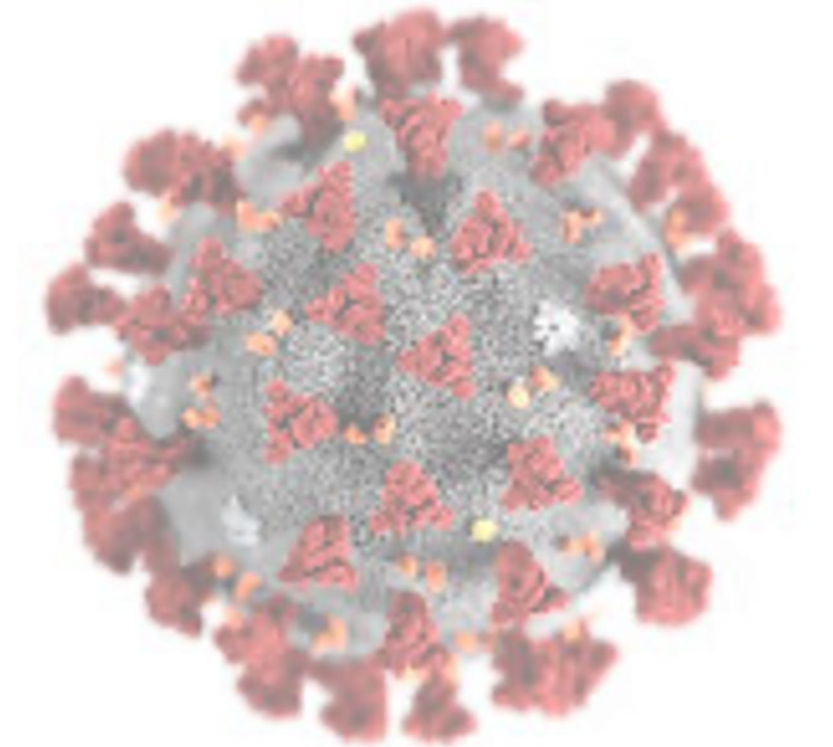
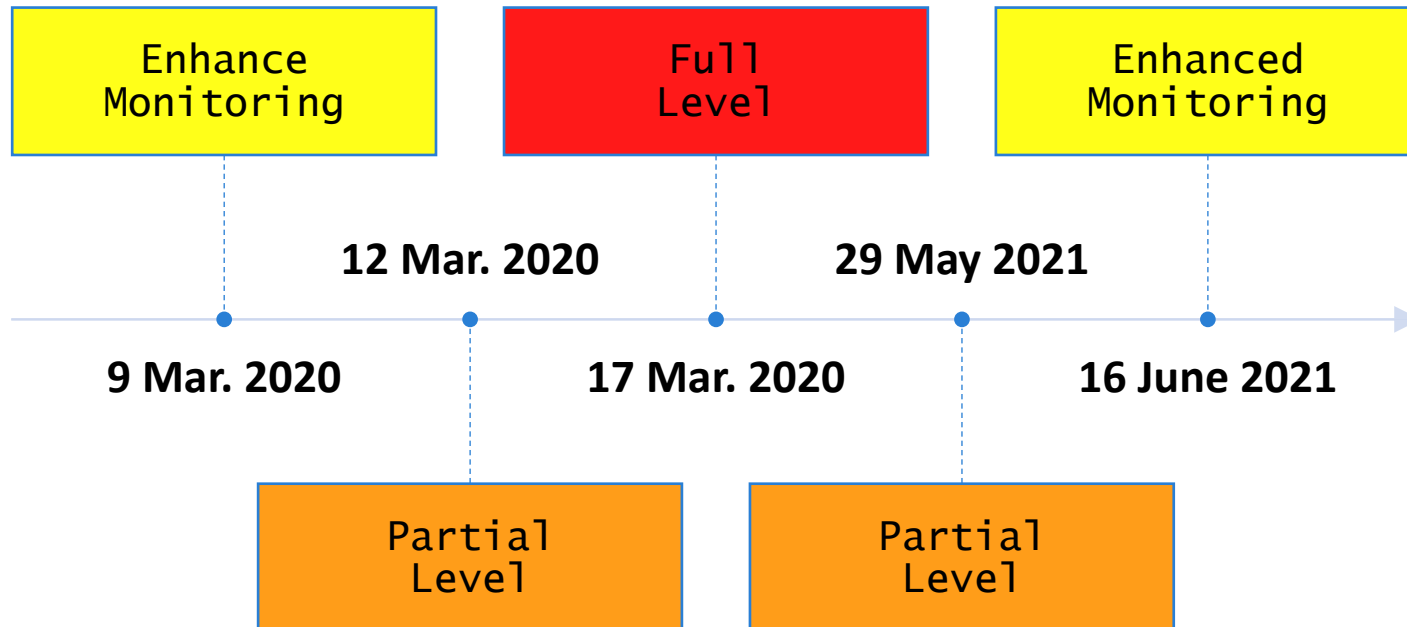
Expired 06/15/2021



March 5 – 9 Wildland Fires

- Agencies Activated
 - Adjutant General's Department
 - Kansas Division of Emergency Management
 - Kansas Forest Service
 - Aerial fire suppression
 - Sumner/Sedgwick County Taskforce
 - Office of the State Fire Marshal
 - Kansas National Guard
 - Aerial fire suppression
 - Ground fire suppression

March 12, 2020 - continuing



Operational ESFs

ESF #	Agency	Primary/Support
15	Adjutant General's Department (TAG) Public Affairs Office (PAO)	Primary
1,5,7	Adjutant General's Department Civil Air Patrol (CAP)	Support
1,7,11,14	Adjutant General's Department Kansas National Guard (KSNG)	Support
5,7,14	Adjutant General's Department Kansas Division of Emergency Management (KDEM)	Primary
6	American Red Cross (ARC)	Support
12	Evergy	Support
8	Kansas Board of Emergency Medical Services (KBEMS)	Support
12	Kansas Corporation Commission (KCC)	Primary
7	Kansas Department of Administration (KDoA)	Support
6, 8	Kansas Department for Aging & Disability Services (KDADS)	Support
11	Kansas Department of Agriculture (KDA)	Primary
6,8	Kansas Department of Children & Families (DCF)	Primary, Support
14	Kansas Department of Commerce	Support
14	Kansas Department of Education (KSDE)	Support
10	Kansas Department of Health & Environment (KDHE) Division of Environment	Primary
8	Kansas Department of Health & Environment (KDHE) Division of Health	Primary
14	Kansas Department of Labor (KDOL)	Support
1	Kansas Department of Transportation (KDOT)	Primary
1,13	Kansas Department of Wildlife, Parks & Tourism (KDWPT)	Primary
14	Kansas Department of Revenue	Support
4	Kansas Forest Service (KFS)	Primary
1,13	Kansas Highway Patrol (KHP)	Support, Primary
6,11,14	Kansas Voluntary Agencies Active in Disasters (VOAD)	Support
5	National Weather Service Office (NWS)	Support
5, 15	Office of the Governor	Support, Primary
4	Office of the State Fire Marshal (OSFM)	Primary

Activities

- Alternate Care Site planning and assessments
- Continuity of Operations Planning & Implementation
- Communications
- Crisis Communications
- Damage Assessment
- Debris Management assistance
- Donations
- Food & Commodities
- Hazmat Response
- Non-congregate care shelters
- Mass fatality planning
- Mobile testing/vaccine sites
- Public Water Supply
- SEOC Management
- Strategic National Stockpile
- Repatriation – Cruise Lines
- Law enforcement
- Procurement
- Swine Depopulation Planning
- Warehousing
- Transportation



63 Executive Orders

- Ad Astra: A Plan to Open Kansas
- Adult Care
- Alcoholic beverages
- Drivers license and registration
- Face Covering/Masks
- Foreclosures and evictions
- KEFF established
- Mass gathering
- Motor Carrier
- Non-resident hunting permits
- School closures
- Stay at Home orders
- Professional and occupational licenses
- Tax deferral
- Telemedicine and licenses
- Unemployment insurance
- Virtual technology for courts and notaries
- Utility disconnects
- Waste removal/waste recycling

Non-congregate shelters

Ford

Finney

Johnson

Leavenworth

Lyons

Seward

Wyandotte

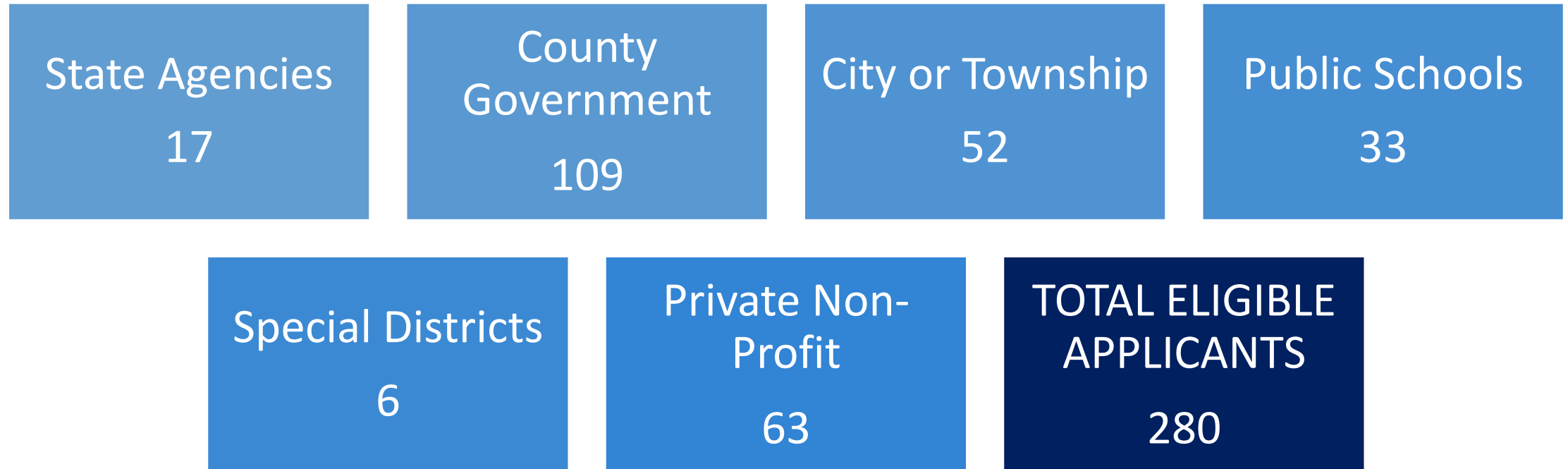
Sterling (Rice)

Wesleyan (Saline)

Tabor (Marion)



Public Assistance Program DR-4504



Funeral Assistance

Total Number of COVID19 Deaths: 5,211

of Decedents Registered: 2,220

Eligible: 1,478

Awarded: \$9,350,069

Average Amount of Award: \$6,598

October 9-18 Wildland Fires

Agencies Activated:

- Adjutant General's Department
- Kansas Division of Emergency Management
- Kansas Forest Service
 - Aerial Suppression (standby)
- Office of the State Fire Marshal
- Kansas National Guard
 - Aerial Suppression (standby)



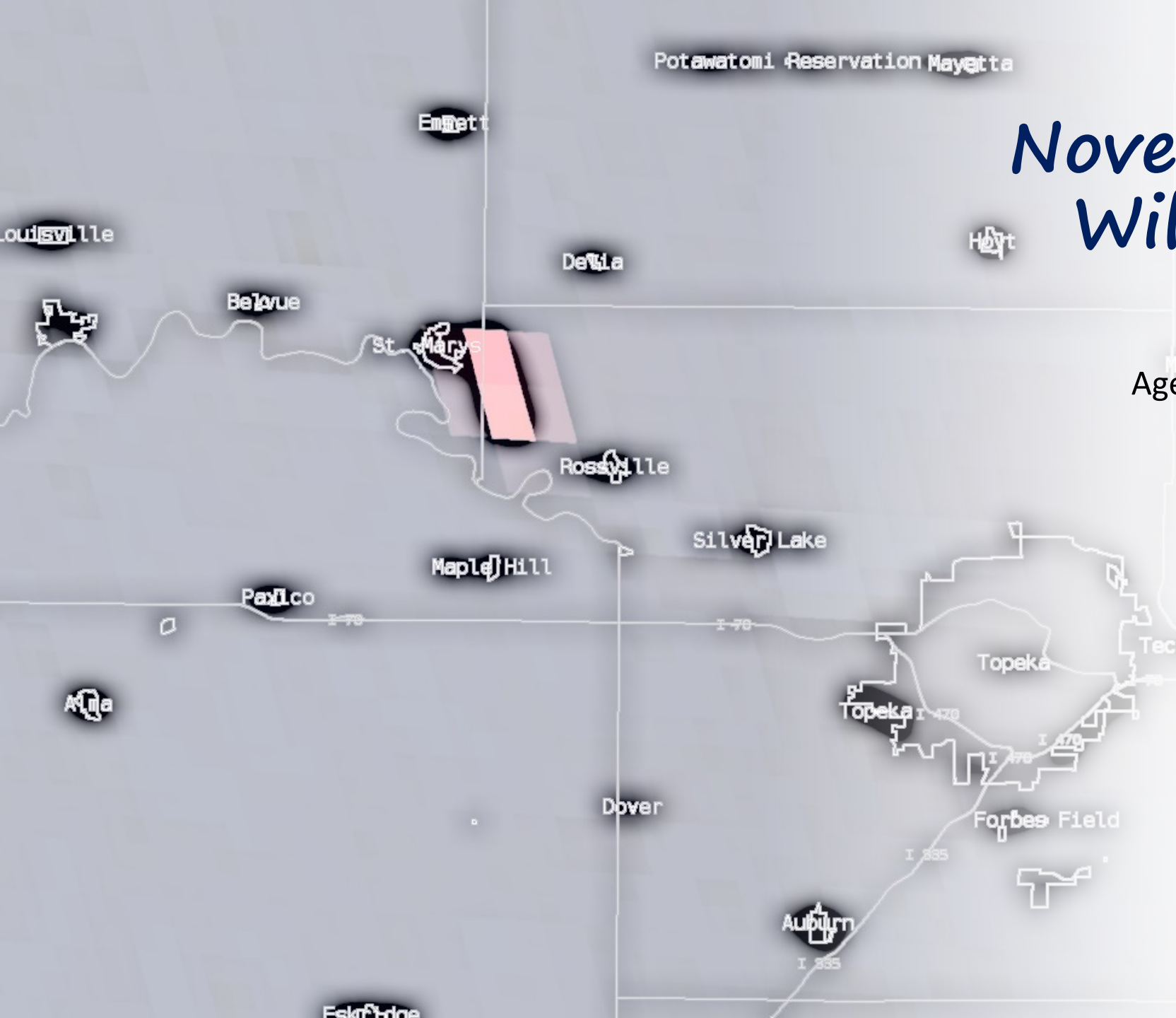
November 6-8 Wildland Fires

Agencies Activated:

- Adjutant General's Department
- Kansas Division of Emergency Management
- Kansas Forest Service
 - Aerial Suppression
- Office of the State Fire Marshal
- Kansas National Guard



November 14-18 Wildland Fires



Agencies Activated

- Adjutant General's Department
- Kansas Department of Transportation
- Kansas Division of Emergency Management
- Kansas Forest Service
 - Aerial fire suppression
- Office of the State Fire Marshal
- Kansas National Guard
 - Aerial fire suppression

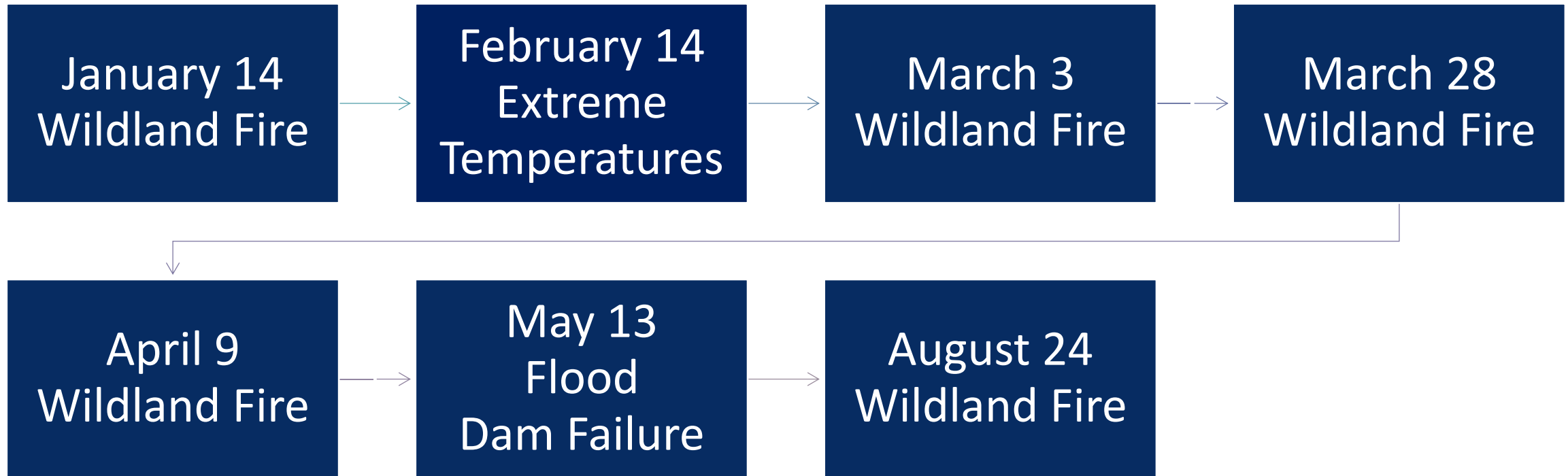


November 28-29 Wildland Fires

Agencies Activated

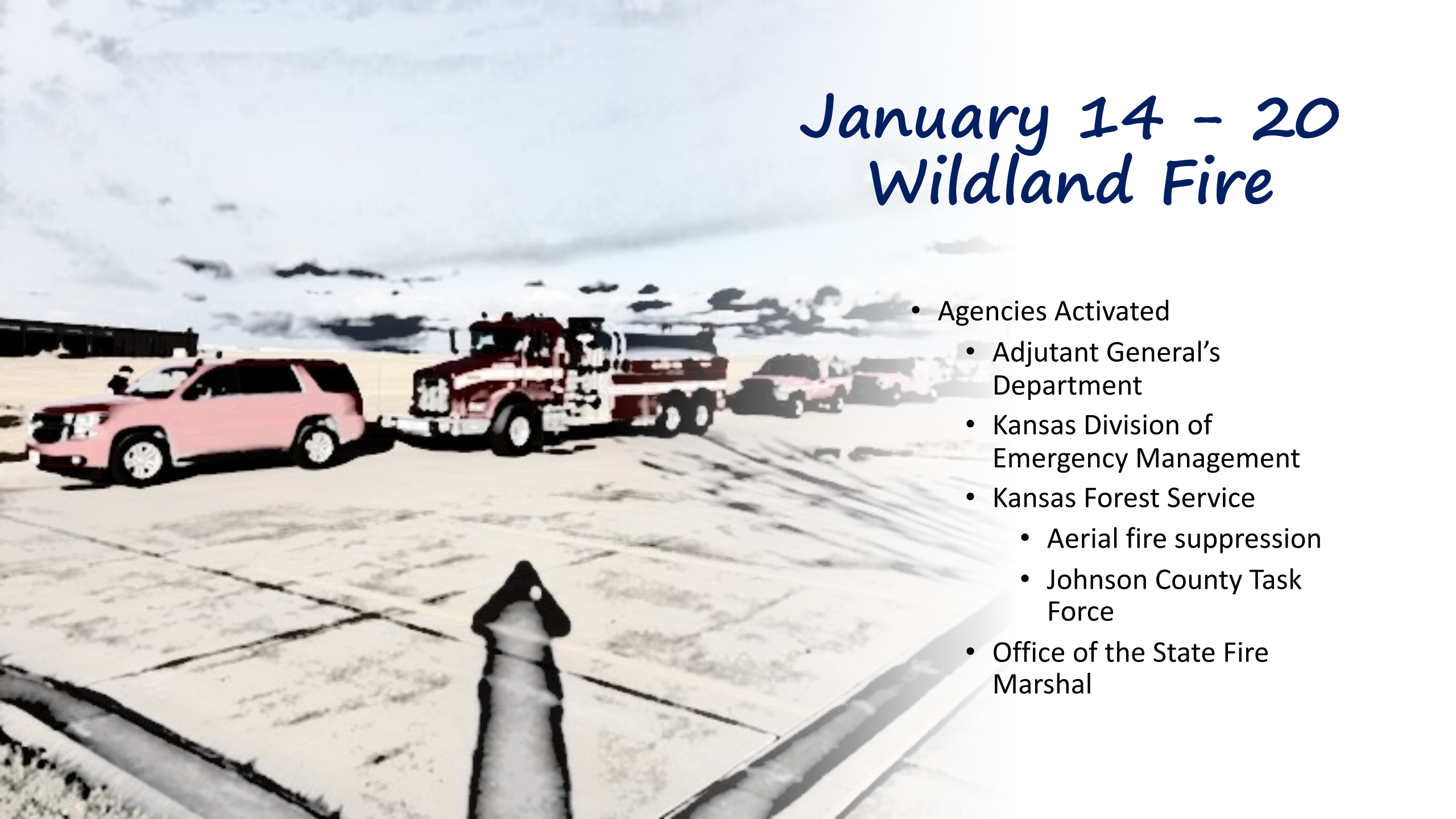
- Adjutant General's Department
- Kansas Division of Emergency Management
- Kansas Forest Service
- Office of the State Fire Marshal
- Kansas National Guard

Governor Declarations/SEOC Activation January 1 – December 31, 2021

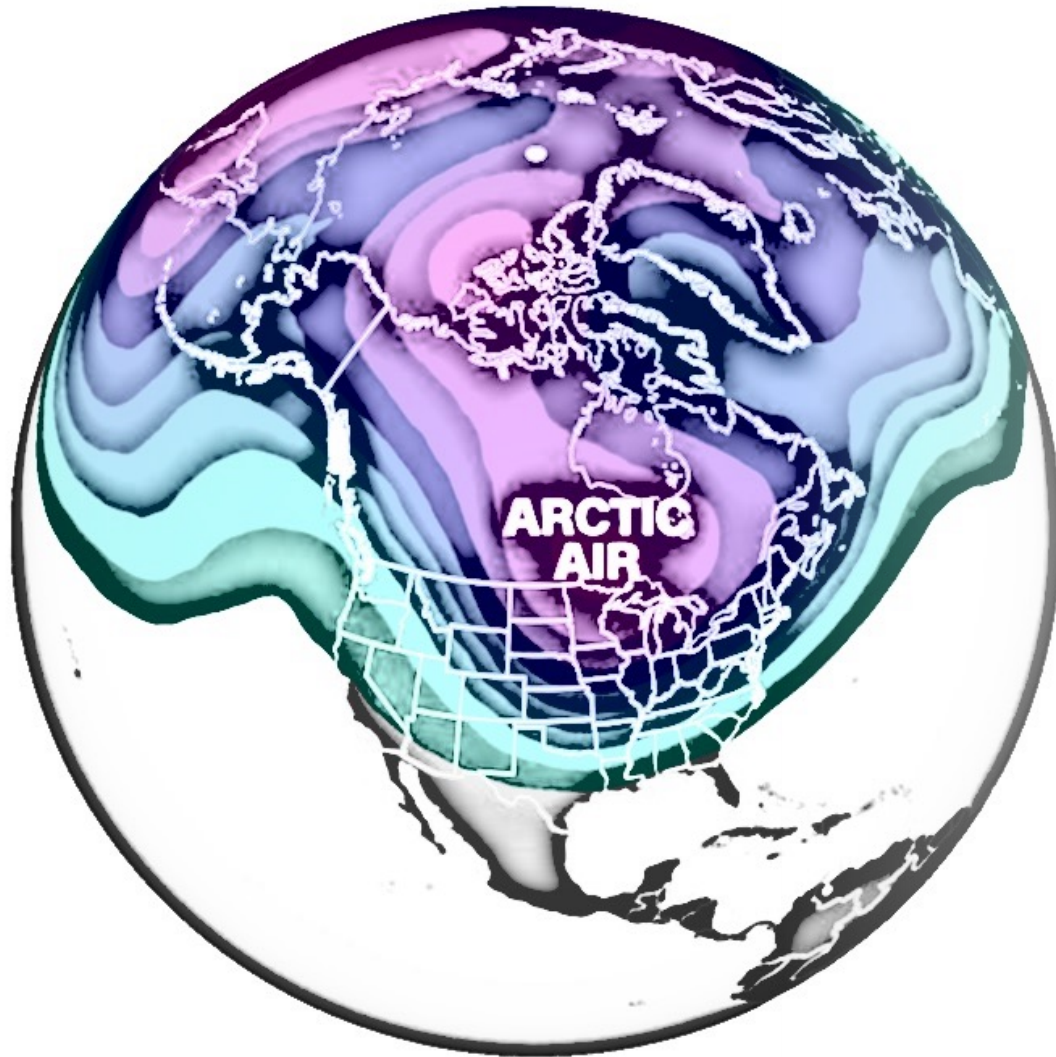


January 14 - 20 Wildland Fire

- Agencies Activated
 - Adjutant General's Department
 - Kansas Division of Emergency Management
 - Kansas Forest Service
 - Aerial fire suppression
 - Johnson County Task Force
 - Office of the State Fire Marshal



February 14 Extreme Temperatures



Agencies Activated:

- Adjutant General's Department
- American Red Cross
- Kansas Division of Emergency Management
- Kansas Department of Children & Families
- Kansas Corporation Commission

March 3 – March 11 Wildland Fire

Agencies Activated

- Adjutant General's Department
- Kansas Division of Emergency Management
- Kansas Forest Service
 - Aerial fire suppression
 - Great Plains Interstate Fire Compact
- Kansas National Guard
 - Aerial fire suppression
- Office of the State Fire Marshal



March 28 – April 7 Wildland Fire

Agencies Activated

- Adjutant General's Department
- Kansas Division of Emergency Management
- Kansas Forest Service
 - Aerial fire suppression
- Kansas Department of Transportation
- Office of the State Fire Marshal



April 9-April 24 Wildland Fire

Agencies Activated

- Adjutant General's Department
- Kansas Division of Emergency Management
- Kansas Forest Service
 - Aerial fire suppression
- Office of the State Fire Marshal



May 13 – May 28 Flooding and Dam Failure

Agencies Activated

- Adjutant General's Department
- Kansas Division of Emergency Management
- Kansas Department of Agriculture, Division of Water Resources



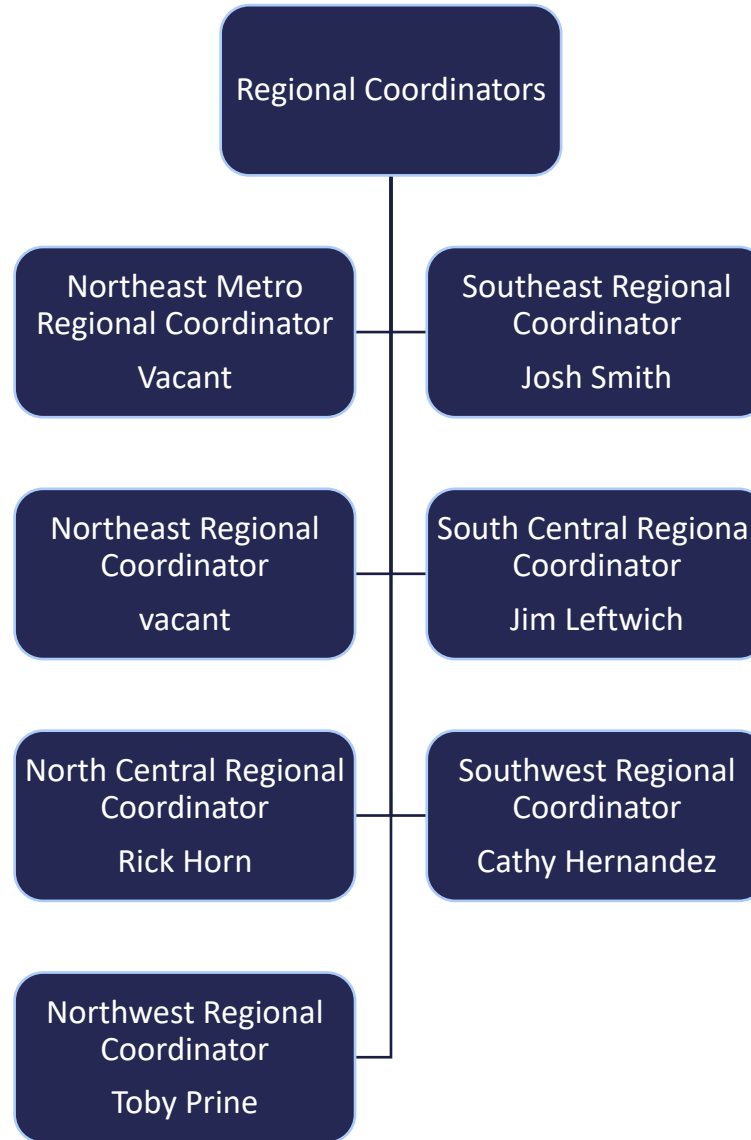
August 24-September 8 Wildland Fire

Agencies Activated:

- Adjutant General's Department
- Kansas Division of Emergency Management
- Kansas Forest Service
 - Aerial fire suppression
- Office of the State Fire Marshal



*Response & Recovery Bureau
Response Section
Regional Coordinators*



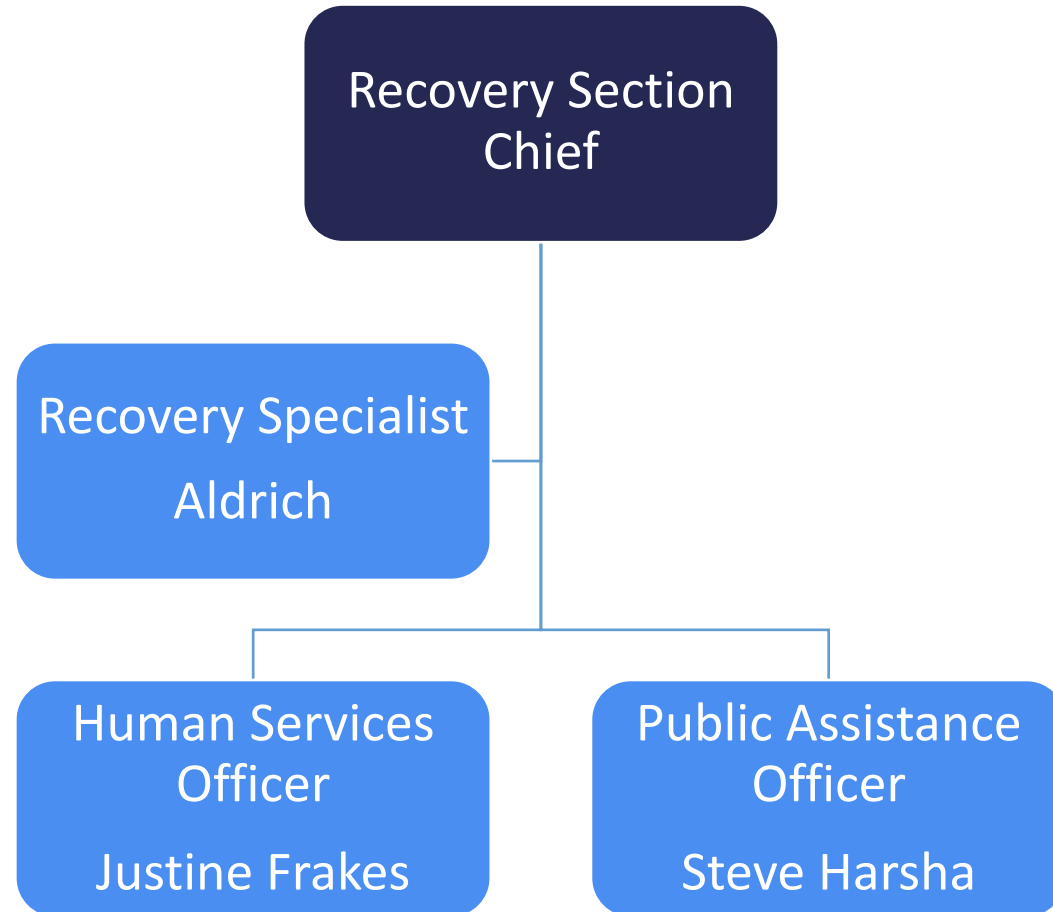
*Response & Recovery Bureau
Recovery Section*

Recovery Section
Chief
Devan Tucking

Recovery Programs

Technological
Hazards

*Response & Recovery Bureau
Recovery Section
Recovery Programs*



National and Kansas Preparedness Month September

Join us on our Facebook page – Kansas Division of Emergency Management – for information, challenges, and giveaways

- A new Citizen Disaster Preparedness certificate of completion is being offered to those who participate in the upcoming virtual “Citizen Disaster Preparedness Series-Emergency Binder” course which will be offered by KDEM in September and October, with two session options per week, only one need be attended
- The virtual courses will guide participants through general household disaster preparedness and the creation of their own emergency binder. Sessions will begin Sept. 5, 2021 and run through Oct. 29, 2021 with sessions offered on Fridays at 7 p.m. and on Sundays at 3:30 p.m. To join the course log on to gotomeet.me/KDEMResponse and utilize the audio feature or call in to sessions at: 1-866-899-4679; Code: 212-339-173
- Late starts are allowed

Preparedness Month Activities - September

Are you prepared for a disaster or emergency?
Join us for a new virtual class!

Citizen Disaster Preparedness Certificate Course

An Online Class offering citizens the opportunity to learn about disaster preparedness and create an emergency binder for their homes. To join the course log on to gotomeet.me/KDEMResponse and utilize the audio feature or call in to sessions at: 1-866-899-4679;
Code: 212-339-173.



Begins September 5, 2021 • 7 P.M.
Sessions offered twice weekly through October.
Message us for questions or details!

JOIN US FOR

PREP TALK

**A Live Facebook chat to share disaster
preparedness tips, tricks, and best practices!**

**THURSDAY
2-3PM**

Individual Assistance Programs

Disaster Unemployment Assistance

**Individuals and Households Program
Assistance**

**Crisis Counseling Assistance and
Training Program**

Voluntary Agency Coordination

Mass Care and Emergency Assistance

Disaster Case Management

Disaster Legal Services

Additional Resources

Small Business Administration (SBA) 2021

Osborne County

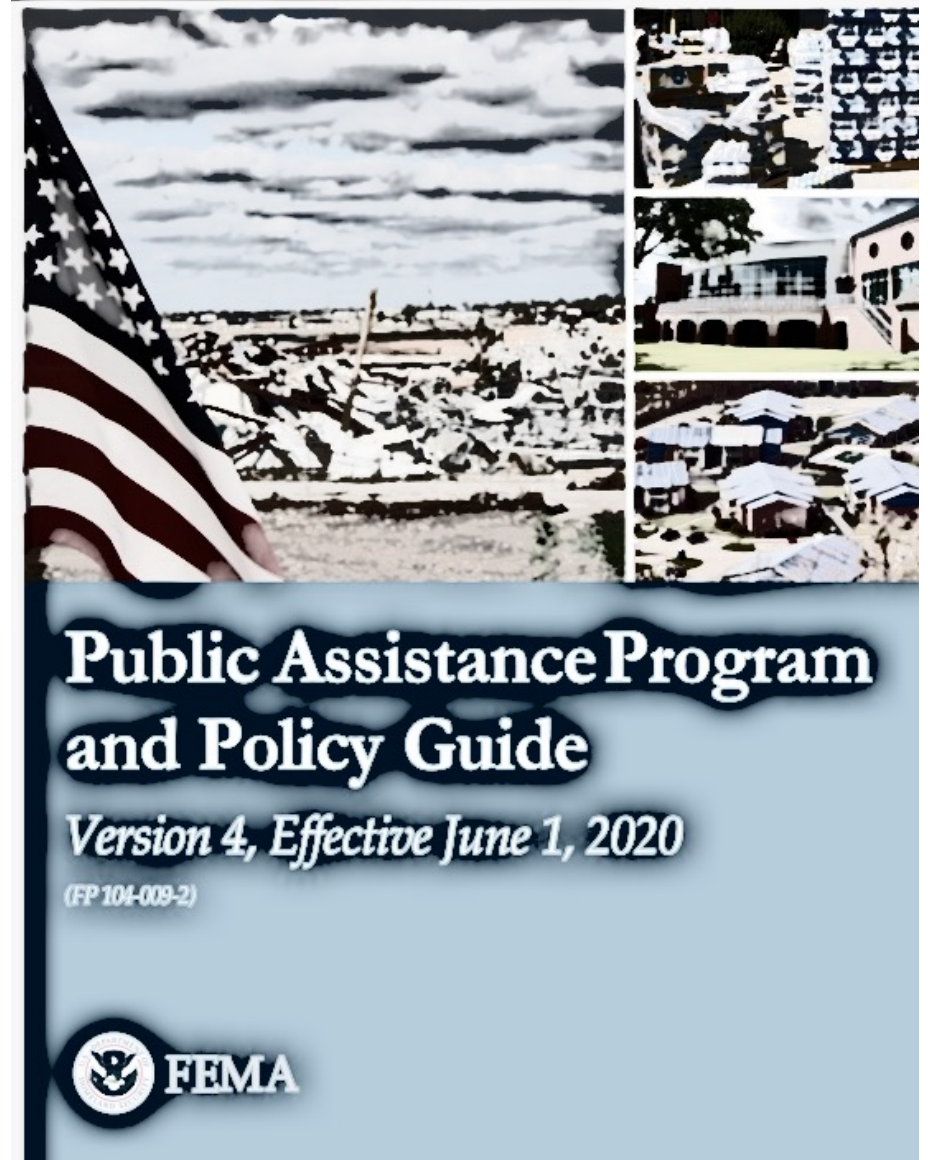
May 16th



Crisis Counseling Program for COVID-19

- Available through December 2021 under the major presidential disaster declaration for COVID-19
 - Administered through an interagency federal partnership between FEMA and the Substance Abuse and Mental Health Services Administration (SAMHSA)
 - Outreach program working to provide crisis counseling via remote services, select community mental health centers, and educational material and online support for overall mental health and wellness
 - For assistance, call 800-273-8255
 - Website: www.ksstrongertogether.org
 - Facebook: Kansas: Stronger Together

Public Assistance Program



Open Public Assistance Disasters

DR-4304 – Severe winter storm

- February 23, 2017

DR-4319 – Severe winter storm, severe storms, flooding

- June 15, 2017

DR-4347 – Severe storms and flooding

- November 7, 2019

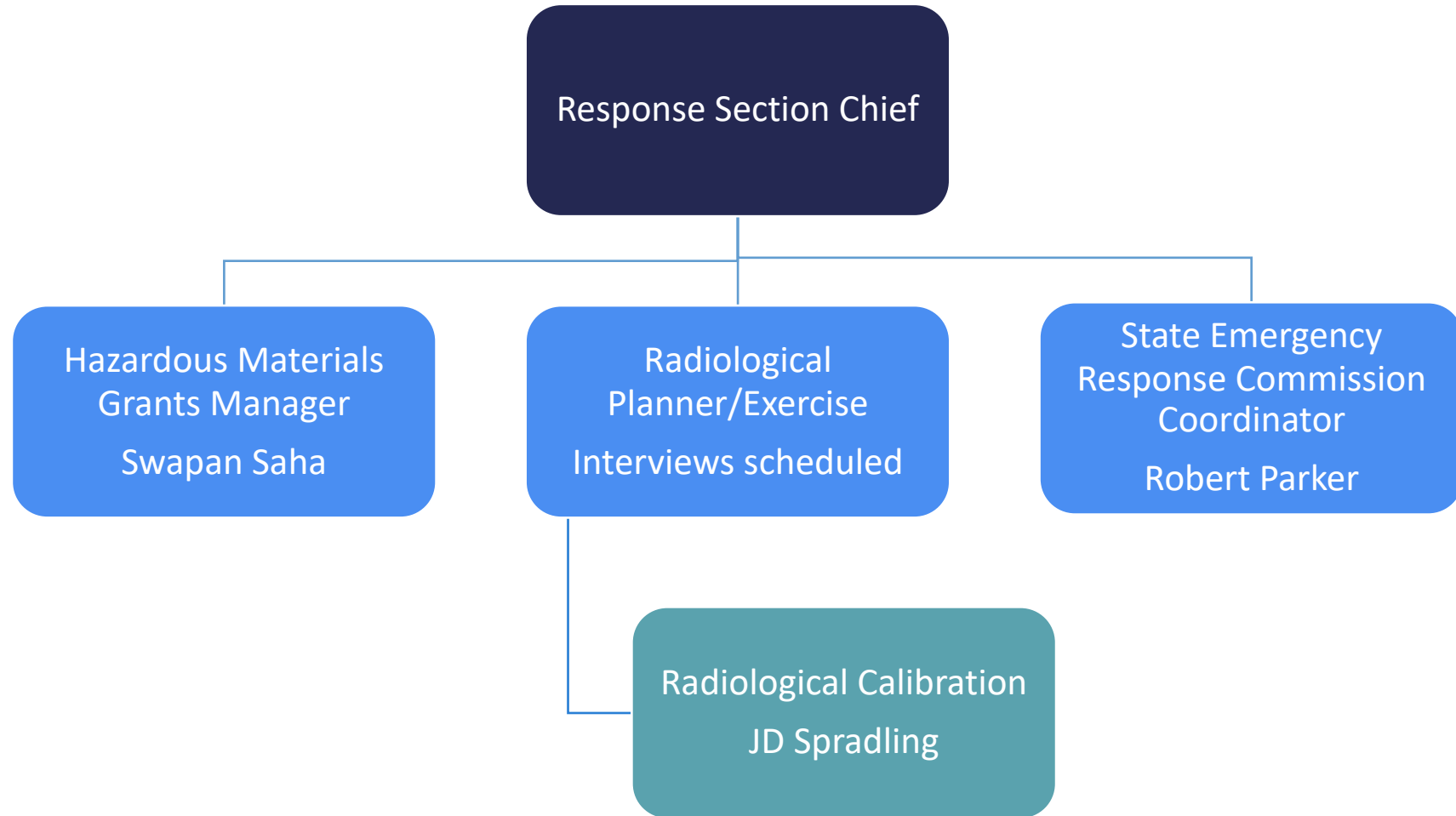
DR-4449 – Multi-hazard Event

- June 20, 2019

DR-4504 - Pandemic

- March 29, 2020

*Response & Recovery Bureau
Recovery Section
Technological Hazards*



LEPC Compliance Reporting 2020 & 2021

- LEPC meetings and exercises not required in 2020 and 2021 due to COVID-19; all other LEPC compliance reporting requirements in place
- Developed online survey for 2021 LEPC compliance reporting
 - Streamlined reporting process with document upload capabilities
 - Survey covers all required reporting information
 - Accessible via computer, tablet, or smartphone
 - Training materials forthcoming

2021 LEPC Compliance Survey

Chairperson Information

First Name

Last Name

County

Phone

Email

STATE OF KANSAS

Powered by ArcGIS Survey123

The image shows a screenshot of an online survey form titled "2021 LEPC Compliance Survey". The form is overlaid on the official logo of the Division of Emergency Management, State of Kansas. The logo features a circular emblem with a lightning bolt, a house, and a tree, surrounded by the text "DIVISION OF EMERGENCY MANAGEMENT" and "STATE OF KANSAS". The survey form includes fields for "Chairperson Information", "First Name", "Last Name", "County", "Phone", and "Email". The "Phone" field has a small "x2" icon, and the "Email" field has an envelope icon. At the bottom of the form, it says "Powered by ArcGIS Survey123".

Summary of HMEP Grant Activities

- FY 2020 HMEP
 - KDEM received \$369,867 of HMEP grant funds
 - Over 85% of the funds were awarded for 10 sub-grant projects
 - One project got cancelled due to COVID-19 issues
 - Residual funds are being reallocated for supplemental grants to LEPCs
- FY 2021 HMEP
 - KDEM submitted application for \$397,482 of HMEP grant funds that included 9 sub-grant projects (89% of grant allocation)
 - Awaiting notification from USDOT on the HMEP 2021-2022 grant