



2021 KEMA CONFERENCE

September 14-17, 2021

Kansas Star Event Center, Mulvane, Kansas



Learning from the Past, To prepare for the Future

CONFERENCE SPONSORS

GOLD SPONSOR



SILVER SPONSOR



JEO CONSULTING GROUP



KANSAS PUBLIC AWARENESS

BRONZE SPONSOR



FRIEND OF KEMA



FIRST RESPONDER
"Helping people...saving lives"

Learn more about having a conference booth and becoming a sponsor at kema.org/exhibitors.

FROM THE KEMA PRESIDENT

KEMA Conference Attendees:

Welcome to the 2021 KEMA Conference! As you all know COVID didn't allow us to have our annual conference in 2020, so it is with great pleasure that I have the privilege to greet everyone attending this year. It has been a long time since we have been able to meet and network in person.

I hope everyone enjoys the conference that the committee has put together and is able to gather some knowledge on how to improve your Emergency Management programs. Enjoy yourselves, and I hope you value the time to network with your fellow EM professionals as much as I will!

Regards,

Russel Stukey
KEMA President 2019-2021

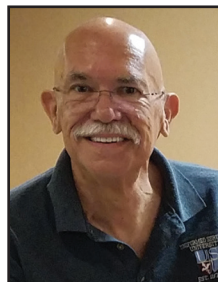
CONFERENCE DEDICATIONS



Bruce Brazzle



Gail Aills



Jim Schmidt

Bruce Brazzle, Oct. 16, 2019: *Pott. County Fire Supervisor, KEMA Member*

Gail Aills, Mar. 15, 2020: *Saline County Emer. Mgmt. Director for 13 years, KEMA Member*

Jim Schmidt, April 14, 2020: *Butler County Emer. Mgmt. Director for 26 Years, Life Member, Past President of KEMA*



Delmer Dunham



Quinton Unruh



Marvin Stice

Delmer Dunham, May 1, 2020: *Lane County Emer. Mgmt. 1994-2007, Life Member*

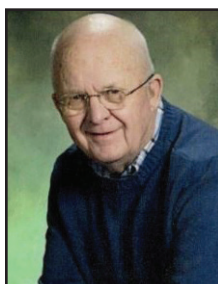
Quinton Unruh, Nov. 23, 2020: *Shawnee County Health Dept. Emer. Mgmt. (1 yr) & Preparedness Exercise Officer for KDEM, 4 Years, KEMA Member*

Marvin Stice, Dec. 31, 2020: *Meade County Preparedness Coordinator, Life Member*

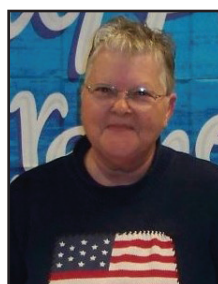
Alfred LeRoy Baker, May 23, 2021: *Grant County Assistant Emer. Mgr. 1988-2001 (13 years), SW VP for at least 2 years, KEMA Member*



Al Baker



Larry Turpin



Kathy Guy

Larry Turpin, May 28, 2021: *Scott County Emer. Mgr. 1999 - 2017, KEMA Member*

Kathy Guy, Mar. 22, 2021: *Butler County Emergency Manager Assistant 15 years, Life Member*

REGISTRATION

Conference registration can be completed online at: kema.org/registration-form.
Complete conference details can be found at: kema.org/conference-details.

When you complete your online registration, you can pay online or receive an invoice. To receive the earlybird rates, you must register and pay by August 31, 2021.

CONFERENCE RATES

- KEMA Member Full Conference Pass: \$250 / \$300 (after Aug. 31)
- Non-member Full Conference Pass: \$400 / \$450 (after Aug. 31)
A Member & Non-member Full Conference Pass includes an Awards Banquet Ticket with registration.
- 1 day pass (Wed. or Thur.): \$175
- Friday Pass: \$125
- 2 day pass - Wed. & Thur. Pass or Thur. & Fri. Pass: \$250
- Additional Awards Banquet Ticket: \$35
- Membership: \$75

CONFERENCE LOCATION/HOTEL

The 2021 KEMA Conference will be held at the Kansas Star Event Center, 777 Kansas Star Drive, Mulvane, KS 67110.

The 2021 KEMA Conference hotel will be the Hampton Inn & Suites Wichita/Mulvane, which is connected to the event center. The hotel address is 785 Kansas Star Drive, Mulvane, KS 67110.



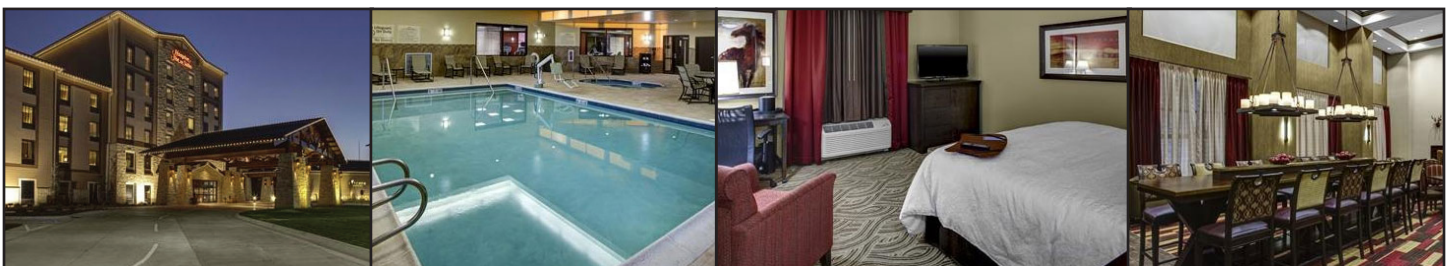
For an online reservation link or for more details, visit: kema.org/conference-hotel.

Or make reservations by calling the hotel at 316-524-3777.
Make sure to tell them the group name to get our discounted price.

Group name: KEMA 2021 or KMA

Room rate: \$91.00 per night + taxes

Reservation deadline: August 23, 2021



KEMA CONFERENCE SCHEDULE

Tuesday, September 14, 2021

Pre-Conference Workshops:

1000 – 1200: Training:

- **“EM-101”: Part 1** with Jillian Rodrigue and Chuck Magaha
- **Background programs and information to support radar imagery** – Presented by NWS
AM Session (same session as PM, select one)

NWS Meteorologists will provide a live demonstration using the radar depiction software Grlevel 3 and Grlevel 2 Analyst to depict various tools, GIS data, placefiles, etc. This data is designed to aid the interpreter in better understanding the location of the hazard, the strength of the hazard, and the overall knobology of utilizing the software. Feel free to bring a laptop with you to this course.

1200 – 1300: Lunch (on your own)

1300 – 1500: Training Continued

- **“EM-101”: Part 2** with Jillian Rodrigue and Chuck Magaha
- **Background programs and information to support radar imagery** – Presented by NWS
PM Session (same session as AM, repeated)

1530 -- **Pre-Conference Social Events** (*Please RSVP on the registration form, Payments Due at the Events*):

- **Sporting Clays** -Shady Creek Sporting Clays, 1252 N Oliver, Belle Plaine, KS 67013
Cost: \$25/50 targets or \$45/100 targets - Chris Trudeau (organizer) - ctrudo.ctrudo@gmail.com
- **Golf** – 9 holes - Pine Bay Golf Course, 6615 S Grove St., Wichita, KS 67216 – Payment due at the event.
Cost: \$30/person - Cody Charvat (organizer) - cody.charvat@sedgwick.gov
- **Regional Forensic Science Center Tour** – The Sedgwick County Regional Forensic Science Center is a full service, state-of-the-art facility housing the office of the District Coroner and Forensic Science Laboratories (FSL). Located at 1109 N Minneapolis, Wichita, KS 67214. No cost for the tour, but please sign up on the registration form. Transportation is on your own.

1900 -- **Pre-Conference KEMA Dinner** (*Please RSVP on the registration form*):

Dinner will be provided in the hotel breakfast area and sponsored by KEMA.

Wednesday, Sept. 15, 2021

0800-0900: Breakfast (Provided at the hotel for those staying at the Hampton)

0900-0945 **Opening Ceremonies:**

- President declares the conference “open”
- Honor Guard posts the Colors
- National Anthem
- Pledge of Allegiance
- State, County, and City Welcome
- Invocation
- Dedications

Wednesday, Sept. 15, 2021 (cont):

0945-1045: Keynote: The Media's Role in Emergency Response - Pilar Pedraza, KAKE-TV

The media is going to be in the midst of any emergency. Whether they're a help or a hindrance in your ability to help people often depends on the relationship between emergency managers and individual reporters. How can you get the media on your side? Get some tips and tricks from the (media) horse's mouth!

1045-1115: Vendor Area Opens/Break

1115-1200: Plenary: State Update - Angee Morgan, KDEM

Highlights of activities and initiatives of the Kansas Division of Emergency Management for years 2020 and 2021.

1215-1315: Lunch (Provided) in vendor hall

1315-1415: General Session: HazMat 101 for Emergency Managers – Chief Dirk Christian

This seminar will highlight important information, resources and statewide capabilities, and numerous incident management tools available to Emergency Managers and first responders anywhere in the state of Kansas, with regards to hazardous materials incidents or emergencies involving chemical, biological, radiological, or nuclear (CBRN) events. Every attendee will be much better equipped to respond to, manage or command an incident, and provide critical resource management to HazMat and CBRN incidents anywhere in the state after this very informative 1-hour session.

1415-1445: Vendor Break

1445-1545: General Session: When Hell Froze Over - Benj Korson, City of Dallas

A summary of lessons learned from a local perspective for a "That'll never happen" incident involving an airport's emergency response to back-to-back heavy winter precipitation systems, extended sub-freezing temperatures, regional power outages, supply chain failures, and transportation sector struggles. Dallas Love Field runs like a small city that supports millions of travelers a year, and this event truly tested its resilience capabilities.

1615-1715: Vendor Reception (hors d'oeuvres provided, cash bar)

Conference attendees are invited to relax and network at the conference Hospitality Suite following conference activities on Wednesday and Thursday evenings during times posted. The Hospitality Suite is located in the hotel behind the breakfast area and sponsored by the KEMA Board of Directors.

Thursday, Sept. 16, 2021:

0700-0800: Breakfast (Provided at the hotel for those staying at the Hampton)

0800-0900: COVID-19 – learned lessons and a look toward the future – Dr. Lee Norman

The COVID-19 pandemic is still raging worldwide, but getting under better control in Kansas and the US. We have learned a lot about preparedness and response, societal resiliency, and recovery, and about the important roles of emergency management and public health. It is a great time to look at the recent past and the road ahead – what have we learned and what can we do better?

0900-0930: Vendor Break

Thursday, Sept. 16, 2021 (cont):

0930-1030: An Update from the Kansas Association of Counties – Bruce Chladny & Jay Hall

The KAC promotes effective, responsive county government through legislative representation, technical assistance, leadership development and professional education. We are a resource for Counties across the state. During this session we will discuss the association's response to the COVID-19 pandemic, legislative action affecting emergency managers, and what we will be working on in the coming months as an organization.

1030-1100: Vendor Break

1100-1200: Plenary: NWS Update

The WCMs serving Kansas will present their traditional session which will highlight The National Weather Service's (NWS) new initiatives and existing partnerships. These sessions reflect the strong cooperative bond, which exists in our state between local EMs and the National Weather Service WCMs who work to warn and protect our citizens.

1200-1230: KEMA Annual Membership Meeting

1230-1330: Lunch (Provided) in vendor hall

1330: Vendor Area Closes

1330-1430: General Session: The Legal Risks in Emergency Management – Jay Hall, KAC

In this session, we will discuss limiting exposure to liability from the perspective of the county, as well as mitigation strategies.

1430-1445: Break

1445-1545: General Session: Local Emergency Operations Planning using the KansasPlanner.com platform - Austin Bork and Will Minkoff

Learn about required elements in Local Emergency Operations Plans (LEOP) and how to navigate updates using KansasPlanner.com. Austin Bork from KDEM and Will Minkoff from BOLDplanning host a 1-hour session covering these topics and answering your questions.

1545-1600: Break

1600-1700: General Session: Kansas VOAD – Your Partner in Disaster Recovery – Jerry Parrish

When disaster strikes in Kansas, KEMA Emergency Managers in the affected counties are on the front lines working to get their communities back to normal. Organizations like the American Red Cross and Salvation Army are first to arrive, but there are many more non-profit agencies which are part of the Kansas VOAD that are ready and available to help in many different ways. The intent of this session is to help KEMA Emergency Managers better connect through and utilize the help of member organizations with the Kansas VOAD in times of disaster.

1830-2100: Awards Banquet

Friday, Sept. 17, 2021:

0800-0900: Breakfast (Provided at the hotel for those staying at the Hampton)

0900-1000: U.S. Department of Homeland Security – Priority Telecommunications Services- Dale Moushon, DHS

You can enhance your emergency communications capability at no cost with Priority Telecommunications Services available from the U.S. DHS CISA's, Emergency Communications Division.

Emergency response agencies and organizations communicate by cellular or landline networks shared with the public. Should those networks become overloaded due to high call volumes or other impairment (weather, civil unrest, terrorism, etc.) essential personnel and locations may not be able to communicate at a critical moment.

GETS, WPS & TSP provide priority communication capabilities to emergency responders.

1000- 1030: General Session - Conference Conclusion and Wrap Up Session

SPEAKER BIOS



BRUCE CHLADNY

Bruce Chladny joined the KAC as Executive Director in August 2019. Prior to that, he worked for Kansas State University. During his tenure at K-State, his work focused on projects including facilitation, team building, and leadership. His latest position was at the K-State Research and Extension office in Wyandotte County. He has worked with governmental entities and non-profit organizations to cooperatively address issues affecting the KC Metropolitan area. Chladny holds a Master of Science in Agricultural Economics from the University of Missouri and a Bachelor of Science in Commercial Horticulture from Purdue University.



CHIEF DIRK CHRISTIAN, MSS, CFO

Chief Dirk Christian, MSS, CFO, is the Emergency Response Division Chief for the Kansas Office of the State Fire Marshal. Dirk is a 31-year veteran and student of the fire service and public safety. He also serves as the volunteer Fire Chief for Shawnee County Fire District #4, west of Topeka. Chief Christian retired in 2018 from the KSARNG and US Army, completing a 30-year military career, and retiring as a Colonel. Chief Christian is a CPSE-designated Chief Fire Officer, a Hazardous Materials Technician and CBRN Specialist, and former Commander of the 73rd Civil Support Team (Weapons of Mass Destruction).



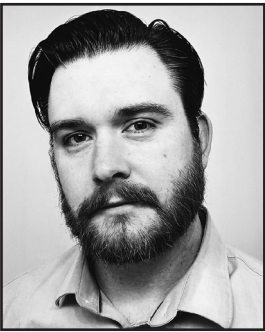
C. DEVALLE CLAY

Devalle C. is a retired Navy Cryptologist with 22 years of experience working National Security Agency (NSA/CSS) operations in Computer Network Attack, Social Engineering/Open Source Intelligence, Human Intelligence, Cyber Intelligence, Cyber Terrorism, Cyber Threat, Cyber Crimes Research, Information Security, and Cyber Exercise Development and Execution. He served 13 years as Cyber Exercise Mission Coordinator and Red Team Social Engineering Lead, developing 42 large scale Joint Military Cyber Exercise scenarios for United States Strategic Command and United States Pacific Command. Mr. Clay currently serves as a Senior Lead Cybersecurity Training Specialist for Texas A&M Engineering Extension Service (TEEX).



JAY HALL

Jay Hall is the Legislative Policy Director and General Counsel for the Kansas Association of Counties (KAC). In his dual role as Legislative Policy Director and General Counsel, Hall implements the legislative policy for the Association and its member counties through lobbying efforts, as well as offering legal counsel to the Association, its Executive Board and employees, and its member counties. Hall received his Juris Doctorate from Washburn University School of Law, where he competed on the Trial Advocacy Competition team. Hall was inducted into the Order of Barristers in 2007. Hall lives in Topeka with his wife, Danielle.



BENJ KORSON

Benj Korson is the Emergency Management Coordinator for the City of Dallas, Department of Aviation which encompasses the Dallas Airport System, including Dallas Love Field (KDAL), Dallas Executive Field (KRBD), and Dallas Vertiport (49T). He manages the Emergency Management Division which is responsible for the emergency preparedness, emergency response, and continuity of operations of all of the airfields. He has 14 years of emergency management industry experience with public, private, and non-profit sectors in local, state, national, and international programs.



CHARLES (CHUCK) MAGAHA

Chuck is currently the Director for Leavenworth County Emergency Management Homeland Security. He has held this position for the last 31 years. He has served 3 terms as President of KEMA. Chuck currently serves as the Homeland Security Chair of Kansas representing all 7 regions of the State of Kansas and Kansas State agencies. He is the State Division Supervisor of the Kansas City Division for the Kansas All Hazards Incident Management Teams in Johnson, Wyandotte and Leavenworth County. Chuck received the first president's award in 2015 from KEMA. Chuck is a member of the Kansas Division of Emergency Managements training cadre for various emergency management courses. He is the lead instructor in the State of Kansas to teach Debris Management throughout the state of Kansas. He is State and nationally trained certified instructor of the Incident Command Systems (ICS), which is delivered to emergency responders and many other agencies in the private sector. Chuck has been involved in law enforcement and has been a volunteer firefighter for Fairmount Township Fire Department in Basehor, Kansas for over 43 years. He is a certified EMS First responder through the State of Kansas. He is a professional Kansas Certified Emergency Manager through KEMA.



ANGEE MORGAN

A graduate of Fort Hays State University, Angee Morgan joined the Kansas Division of Emergency Management (KDEM) in December 1987. On November 1, 2016, she was promoted from the mitigation and planning branch director to deputy director of KDEM. Angee spent 11 years in the operations branch as the individual assistance officer and four years as senior planner before becoming deputy director. Angee began her state career in September 1981 with the Kansas Highway Patrol.

As deputy director of KDEM, Angee oversees all aspects of the division, including response and recovery operations of disasters, emergency planning, and hazard mitigation. As deputy director, she is responsible for statewide training and exercises programs, serves as the primary point of contact for all county emergency managers and advises and assists the Kansas Commission on Emergency Planning and Response (CEPR). Angee has worked numerous major presidential declarations intrastate and interstate, including the World Trade Center.

Angee is a graduate of the 1997 Kansas Certified Public Manager Program and is a 2013 graduate of the Naval Postgraduate School Center for Homeland Defense and Security's Homeland Security Executive Leaders Program.



DR. LEE NORMAN

Lee A. Norman, MD, is the Secretary of the Kansas Department of Health and Environment (KDHE), appointed by Governor Laura Kelly. KDHE has three divisions, including Health, Environment, and Healthcare Finance, which includes the Medicaid program (KanCare). In his military role, Norman is a Colonel in the Kansas Army National Guard, stationed at Joint Forces Headquarters in Topeka, Kansas, reporting to the State of Kansas Adjutant General. COL Norman, as the State Surgeon of Kansas, guides medical troop sustainment and training, health services support, force health protection, biosecurity, and serves as advisor and liaison to the Kansas Department of Emergency Management and Homeland Security. He is a bio-threat and pandemic illness advisor to the Kansas Intelligence Fusion Center.



DALE MOUSHON

Dale Moushon has been the Area Representative for the U.S. DHS's Priority Telecommunications Services since 2017, serving Regions 4 & 7. Dale is a retired law enforcement officer from the St. Petersburg, Florida, Police Department. Dale also served in the U.S. Army Reserve in the Communications Field, working with Land Mobile Radio and Wire Line Communications.

Conference registration can be completed online at: kema.org/registration-form.



JERRY PARRISH

Jerry Parrish has been a member of the Kansas VOAD for eleven years and State Chair for the past five and a half years. During his tenure, he has been instrumental in building a stronger VOAD with new organizations and expanded committees along with by-laws changes to enhance the effectiveness of the organization.

Jerry has worked for Harvesters the Community Food Network for eleven years and is the Director of the Kansas Distribution Center in Topeka, Kansas. That facility is responsible for distributing fifteen million pounds of food annually for people in need among thirteen counties in the state of Kansas.



PILAR PEDRAZA

Pilar Pedraza has been responding to emergency calls as a member of the media for more than two decades. She sees journalism as a public service, using individual stories to help improve people's lives in both big and little ways. While she's best known for her political coverage, she also specializes in breaking news which puts her front and center in most emergency management situations.