

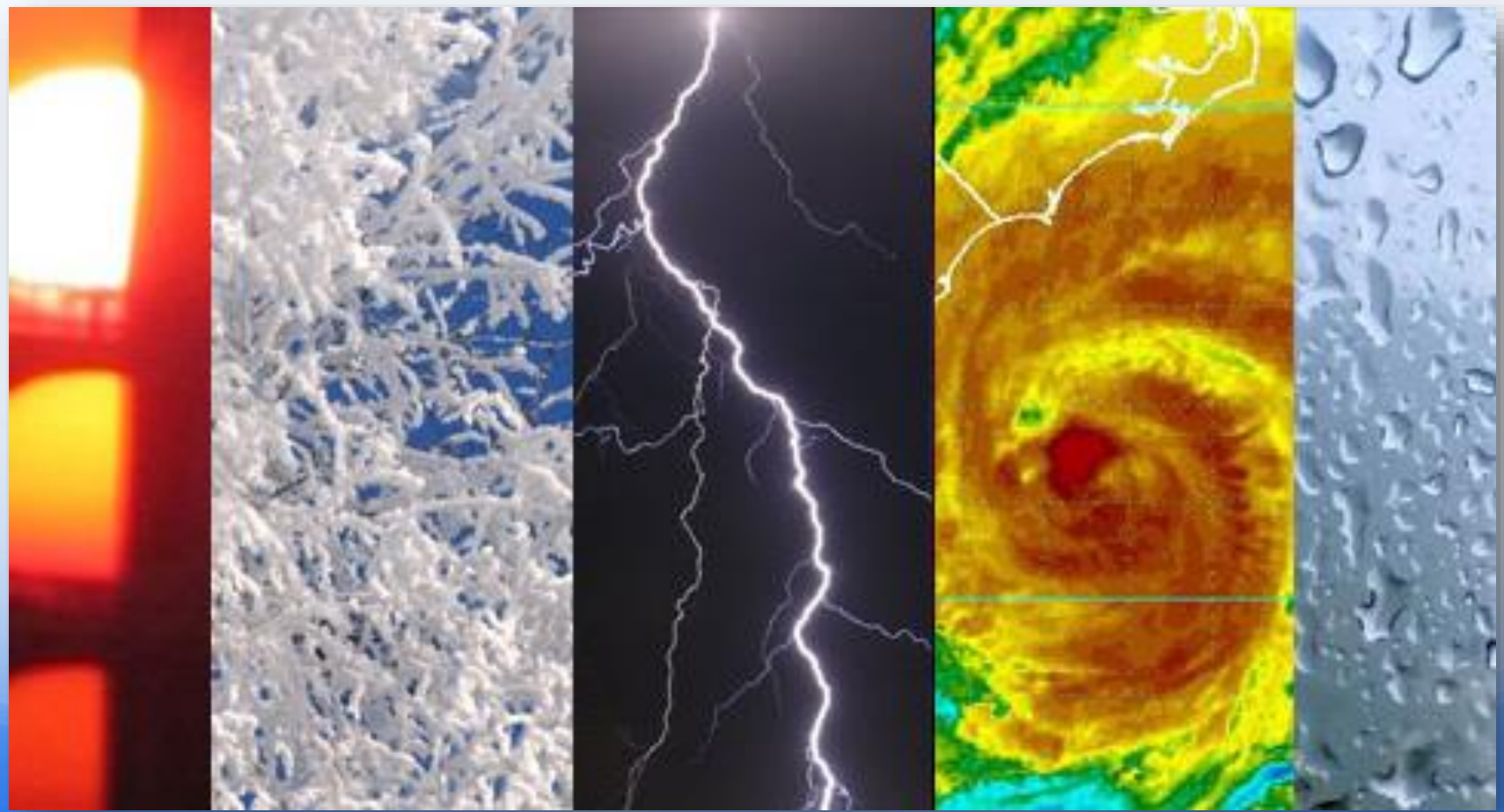
An aerial photograph of a wide, winding river flowing through a dense, lush green forest. The river is the central focus, curving from the top right towards the bottom right. The surrounding forest is thick and vibrant green, extending to the horizon under a clear sky.

# ***Creating a Culture of Resilience***

***Emergency  
Management  
is  
Deep  
And Wide***



# Emergencies





# How Individuals and Families Manage Emergencies



Adrn.net



Givetoasia.org



Stuff.co.nz



Savethechildren.net



# How Emergencies Look To Businesses



WisegEEK.com



Travelers.com

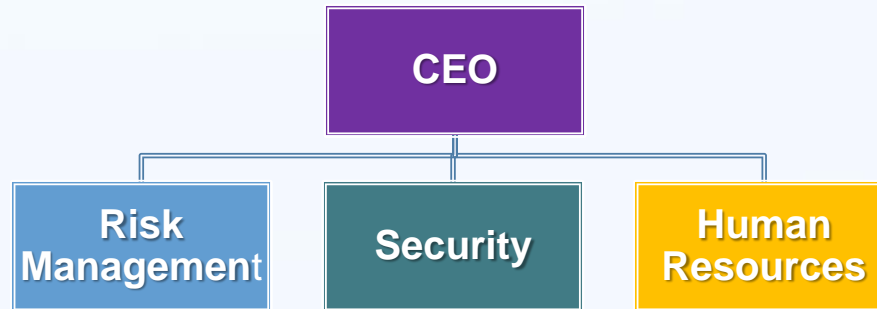


Examiners.com.au





# How Businesses Manage Emergencies



Vienna-wv.com



Nathantrust.com



Latinonenewstoday.com



# How Emergencies Look to Local Government



Efloodsdirect.com



Shentdar.com



Asianews.org



# How Local Governments Manage Emergencies



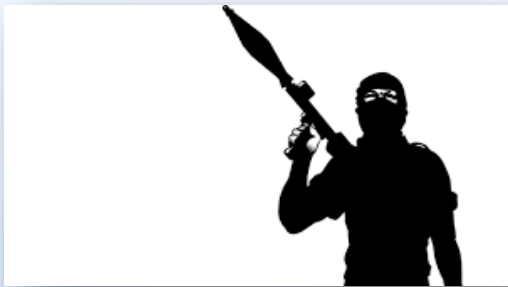
Wc.vpu.edu

Colombian.com

Osha.gov



# How Emergencies Look to National Government



[Freedomandprosperity.org](http://Freedomandprosperity.org)



[Torranceca.gov](http://Torranceca.gov)



[Wnd.com](http://Wnd.com)





# How National Governments Manage Emergencies



[Blog.softlayer.com](http://Blog.softlayer.com)



[Clarkimmigration.com](http://Clarkimmigration.com)



# How Other Countries See Emergencies



Signature.co.uk



Rescue.uk.org



# International Organizations That Help Manage Disasters



Usaid.gov



En.Wikipedia.org



En.Wikipedia.org

Nationsencyclopedia.com



News.xinguanet.org



- Would you say there is more need for emergency management than there used to be or less need than there used to be?
- Why?

An aerial photograph of a wide, winding river flowing through a vast, dense green forest. The river meanders across the landscape, creating several large loops and a small island in the middle. The sky is a pale, hazy blue, suggesting a bright but slightly overcast day. The overall scene conveys a sense of natural beauty and resilience.

# *Resilience*

**What is It and  
How Do Leaders Promote It?**



# Resilience

is the Ability to Overcome  
Adversity





# Phases of Emergency Management





# Prevention and Mitigation Activities

Correct use of land

Avoiding flood prone areas

Separating residential and hazardous commercial activities

Adopting building codes to reduce vulnerability for collapse

## **Leader's Role**

Advocate for safety

Makes sure standards are upheld

Encourage going beyond the minimum





# Preparedness Activities

Risk Assessment

Disaster Planning

Training

Drills

Exercises

## **Leader's Role:**

Encourage staff

Participate yourself

Oversee

improvements



# Response Activities



Police, fire and other emergency services

Volunteer organizations help

Resources from province and national government

Long hours

Many days and weeks

## Leader's Role

Coordinate, don't dictate

Take care of yourself

- Eat right
- Exercise
- Sleep
- Take time off

Make sure your staff takes care of themselves, too



# Recovery Activities

People move back

School starts again

Rebuild damaged structures, like homes, businesses, highways, roads, bridges

Community feels like normal

## Leader's Role

Don't make it worse

Help the community to feel whole again

Build back better



**Questions?**