

Your CEOP is Approved.... Now What?

Matt May

Wyandotte County EM Director

&

Susan McMahan

KDEM, Planner

Caveats, disclaimers and warnings!

Different Perspectives

(some of this will work for you and some of it won't)

- Rural vs. Urban
- Full Time vs. Part Time
- Different Hazards
- Government Setting / Structure

Caveats

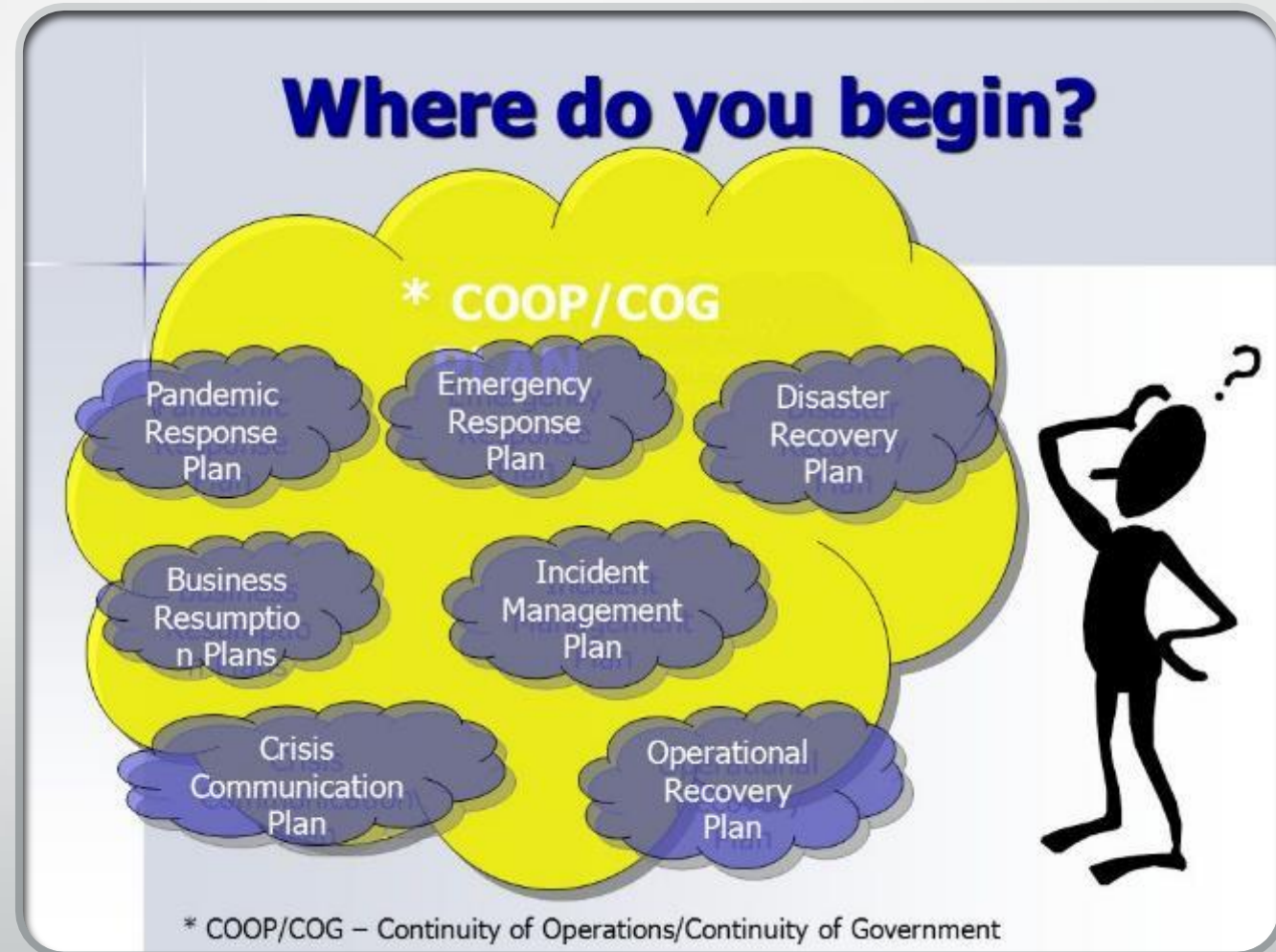
- Blue Sky vs. Grey Sky days

YOUR MILEAGE MAY VARY



The Planning Process

- Planning Process
 - Kansas Planning Standards
 - Bold Planning System
 - Workshops
 - Mentoring
 - Regional meetings

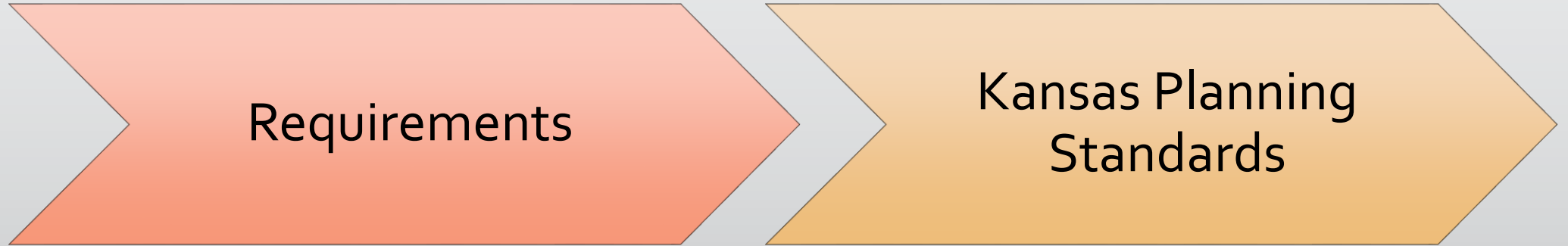


The Planning Process

- Needed Plans
 - HazMit Plan
 - COOP
 - EOP
 - Strategic Plan
- Approved Plan
 - Assuming your plan is approved
 - Promulgations
 - LEPC acceptance



The Planning Process



- Laws
- Guidance
- FEMA (2018-2022 Strategic Plan)
- Response (game plan)
- Grants (statutes and ramifications)

- Updates
- Heavy 2019
- CPG 101

Purpose of Plan

- A document describing how citizens, property, and the environment will be protected in a disaster or emergency.
- Gives organization to chaos.
- Foundation to stand on.
- Extension of your professionalism.
- Needed for EMPG funding.

Purpose of Plan

- SMART action steps
- Continuing education
- Emulating best practices

(STEAL, STEAL, STEAL
but, make it your own!)



Purpose of Plan
This is why we plan.



The plan is the foundation
of a comprehensive
emergency management
system.



Awareness, Responsibilities and Expectations

- Awareness of each Plan Participant's Role
 - Review the roles assigned to all participants
 - Review the roles assigned to their agency/department
 - Make the document palatable but make sure they know where to find what they need to know.
- How is that Awareness developed?
 - One on One meetings with significant players / operational decision makers
 - Make sure that the right people are aware of the plan.
 - Bring the group together and step through the plan.
 - Answer questions and discuss operational concerns
 - Gain concurrence of the group that they can execute the plan

Awareness, Responsibilities and Expectations

- Responsibilities

- Who's Doing What?

- Can you perform the action steps?
 - Do you have the authority to perform the action steps?
 - If you don't perform that action can you explain that to CNN and still keep your job?
 - Can you follow your purchasing plan?
 - Does your agency perform under altered rules of engagement during an event?
 - Can you afford to buy what you need? Can you afford not to?
 - Who needs to approve these commitments?

Awareness, Responsibilities and Expectations

- Expectations
 - What Should They Be Doing?
 - Can you perform your actions steps in a time appropriate fashion?
 - Are there time metrics spelled out in your action steps?
 - Can be within a set amount of time or Event time + NN:nn
 - Do the parties involved know to take that particular action?
 - Who, What, Where, When & Why
 - Is there a written procedure to follow?
 - What does DONE look like?
 - Do we all agree?

Additional thoughts, ideas and best practices

- Exercise your plan!!!
- Don't be afraid to show opportunities for improvement in your AAR
 - Use the AAR as a tool to document a need and justify the investment
 - Be prepared for the "bluebird" to land on your shoulder (grants, dedicated funding)
- Write needed capabilities into your plan now.
 - Even if you can't address them today
 - Develop short term solutions / work arounds
- Develop additional tools (i.e Operational Guides and Checklists)

What you need to do next???

(Let's have a Planning Meeting!!)

Plan your meetings for each portion of your plan

- By ESF or by Annex
- Calendar the meetings at least 3 months before
- Provide copies of plans, handouts, and guides, both soft and hard copies

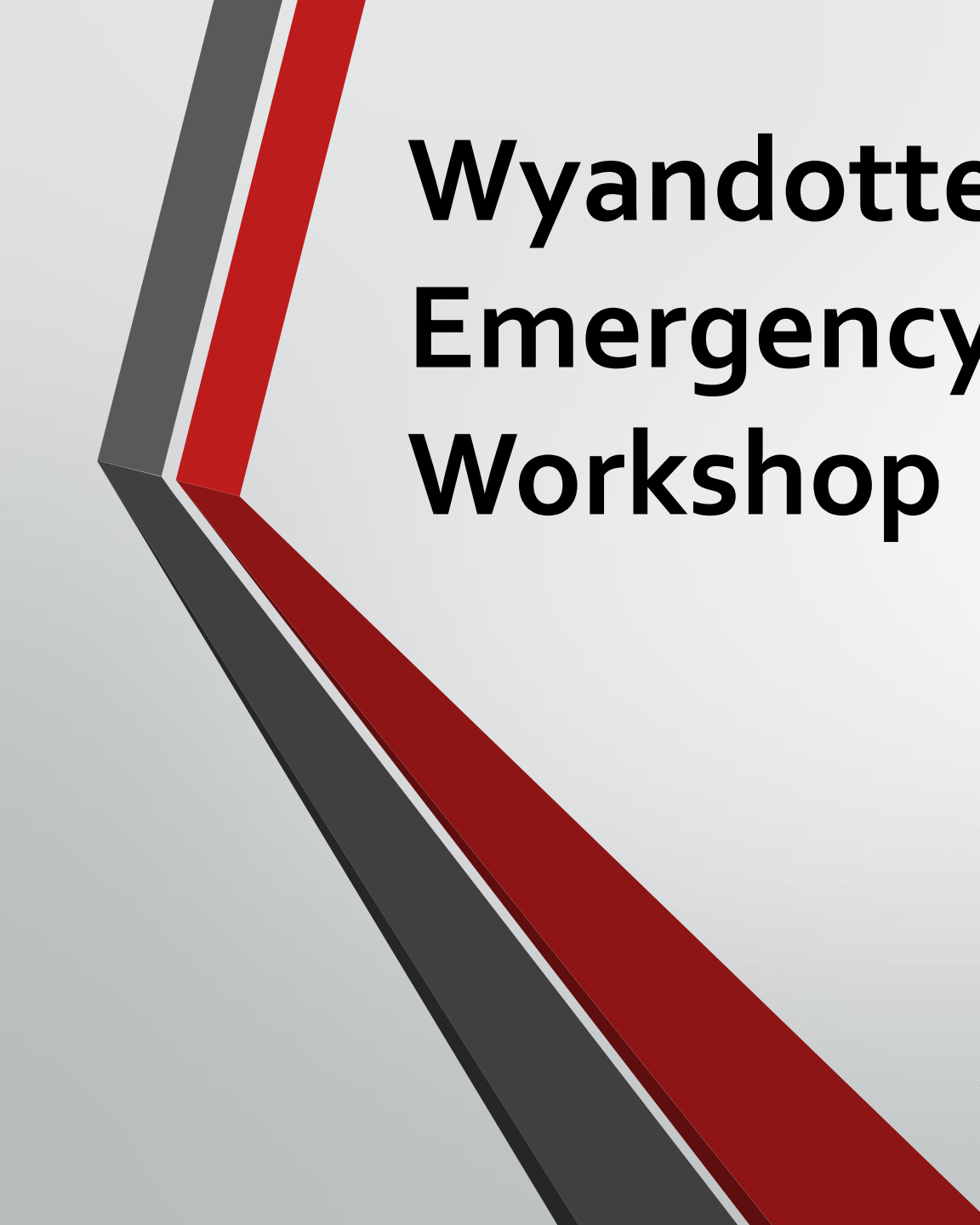


Handouts





Workshop Overview



Wyandotte County Emergency Operations Planning Workshop

Emergency Support Functions

4 Firefighting

#9 Search and Rescue

#10 Oil and Hazardous Materials Response

April 11th, 2018

Welcome and Introductions



EOC Credentials

All ESF Response Team Members will be issued a credential based on the statewide Comprehensive Resource Management and Credentialing System. Please fill out the form provided and stop by our Technology Resources room in the front left corner of the EOC to have your ID photo taken during the course of the meeting.



ResourceMGR Web Personnel Application

Required Fields: All fields preceded by an asterisk (*) are required for entry into the system.

Person Private Medical Qualifications Note

Title

* Last Name

* First Name

Middle Initial

Suffix

* ID

Birth Date


* Organization

Rank

Status

Hire Date

Termination Date

Add Responder Photo 

Note: The State issued Drivers License or ID number is recommended to be used as the "personal ID" unique identifier for personnel in RMWS.

Application Approval (Office Use Only)

Name:

Title:

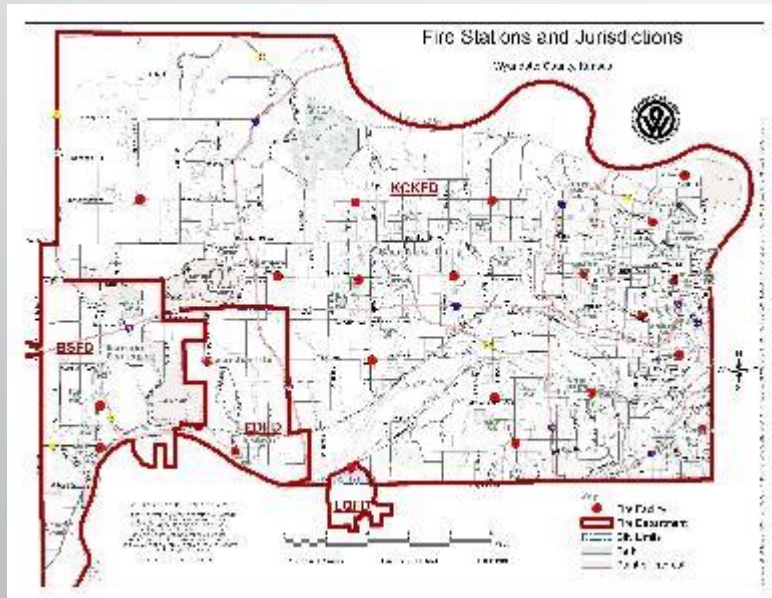
Signature: _____

Note: This approval box is to be used by agencies not inventorying their own responders within the system and forwarding this application to county system administrators (e.g. County Emergency Management). Further, by signing this box you are confirming the affiliation and responder qualifications identified in this application.

ResourceMGR Web Application v3

Threat and Risk

The Regional Hazard Mitigation Plan of 2013 has identified our top risks for Wyandotte County:



Hazard Profile Summary for Wyandotte County						
Hazard	Probability	Magnitude	Warning Time	Duration	CPRI	Planning Significance
Winter Weather / Ice	3	3	2	3	3.85	Moderate
Flood	4	3	3	4	3.55	High
Windstorm	4	2	3	2	3.05	High
Utility/Infrastructure Failure	4	1	4	3	3.00	High
Drought	4	2	1	4	2.95	Moderate
Hazardous Materials	4	1	4	2	2.90	High
Wildfire	4	1	4	1	2.80	Moderate
Tornado	2	4	4	1	2.80	Moderate
Lightning	4	2	2	1	2.80	Moderate
Civil Disorder	2	4	4	1	2.80	Moderate
Terrorism/Agri-Terrorism	1	4	4	4	2.65	Moderate
Agricultural Infestation	4	1	1	4	2.65	Moderate
Hailstorm	4	1	2	1	2.50	Moderate
Extreme Temperatures	3	2	1	3	2.40	Moderate
Dam/Levee Failure	1	4	3	3	2.40	Moderate
Major Disease Outbreak/Medical Epidemic	2	3	1	4	2.35	Moderate
Expansive Soils	3	1	1	4	2.20	Moderate
Radiological	1	2	4	2	1.95	Low
Soil Erosion and Dust	2	1	1	4	1.75	Low
Landslide	1	1	4	1	1.75	Low
Earthquake	1	2	4	1	1.75	Low
Land Subsidence	1	1	4	1	1.30	Low

Incident Scenario Overview



Small Scale Event

- Response is primarily WY CO resources with some external support

Medium Scale Event

- Significant WY CO and Regional response with some State support

Large Scale Event

- Significant WY CO, Regional and State response with Federal and Private Sector engagement

Small Scale Scenario

- A fire has made the top 4 floors of a 10 story apartment building temporary uninhabitable
- Each floor has 10 units with an average of 2 people per unit (80 people)
- Weather conditions are severe cold (+5 degrees), and a 10 mph wind
- Fire started at 2230 hours (10:30 pm)



Medium Scale Scenario

- Weather conditions are cold (+25 degrees) and a 10 mph wind
- 1/10" of ice has accumulated on all exposed surfaces including bridges and other elevated roadways
- A Thundersnow storm has brought visibility to a few feet and over 40 cars have been involved in an accident which has blocked both sides of I 435 at I 70
- Regional resources have been requested

<https://www.cbsnews.com/news/weather-causes-massive-crashes-in-midwest/>

CBS/AP | February 14, 2010, 5:21 PM

Weather Causes Massive Crashes in Midwest



Bad weather is suspected in a massive pileup of cars on Interstate 70 in Kansas City, Kansas on Sunday, Feb. 14, 2010. CBS

Share / Tweet / Reddit / Flipboard / Email

Updated 12:16 a.m. EST

Highways have reopened in the Kansas City area after an afternoon snow squall caused dozens of accidents.

Dozens of weather-related crashes have shut down stretches of several highways in the area. The largest accident involved upwards of 40 vehicles in a massive pileup on Interstate 70.

The University of Kansas Hospital reported 15 people were transported to their hospital and five were admitted, most of them apparently from a second pileup on Interstate 35 involving more than 20 vehicles. None of those that were transported has serious injuries.

On southbound Interstate 70 at 25th Street in Kansas, a multi-vehicle crash shut



12. I-70 and K-7 near the City of Bonner Springs, Kansas

Whiteout conditions caused the 140 vehicle pileups here on February 14, 2010. Luckily, no fatalities or critical injuries were reported but only 13 injured people.

Large Scale Scenario

Train tank car explosion

Fuchs Lubricants 2140 S 88th St

Conditions:

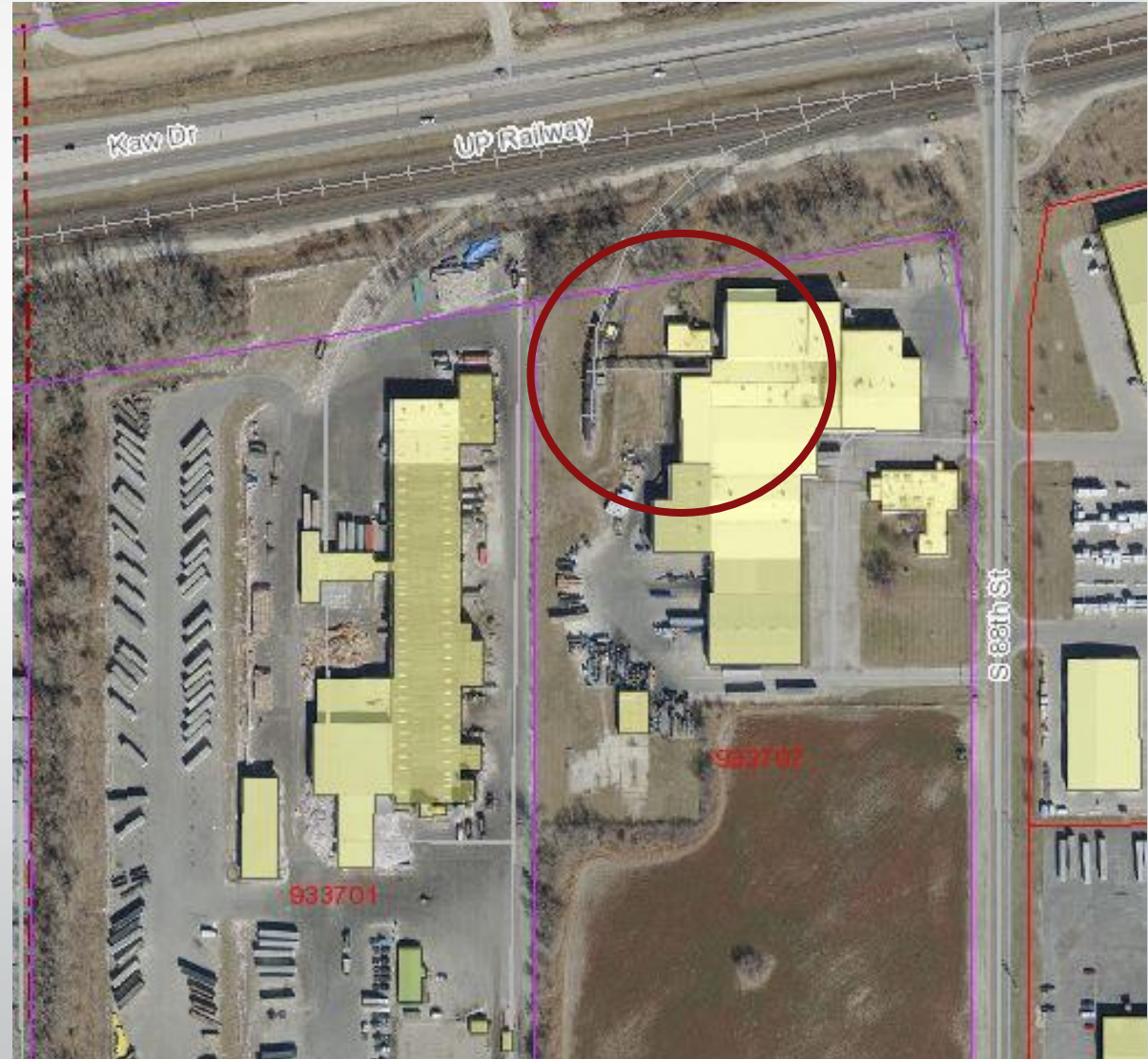
- 1300 hrs on a mid week day
- Sunny skies - 85 degrees
- Wind is 10 MPH coming from the South East (going North West)
- Kaw Dr. and 88th St is busy but not overwhelming



Large Scale Scenario

Train tank car explosion #4 Firefighting

- The train siding and a 1,500 sq ft warehouse are on fire
- Other unignited flammables inside the warehouse:
Lubricants and Petroleum based fuels
- Unknown cause



Large Scale Scenario

Train tank car explosion
#9 Search and Rescue

- 3 employees were working in the transfer yard near the explosion site
- 2 more employees in the nearby warehouse
- Significant damage to nearby warehouse
- Unknown cause



Large Scale Scenario

Train tank car explosion #10 Oil and Hazardous Materials

- Multiple tank cars on the siding
- Some of the tank cars contain used waste oil
- Unknown cause



Overview of EOC Operations

- Purpose of an Emergency Operations Center
 - Collect information and disseminate intelligence
 - Manage and request resources; both internal and external



Overview of EOC Operations

What is an Emergency Support Function?

Emergency Support Functions (ESFs) is the grouping of governmental and certain private sector capabilities into an organizational structure to provide support, resources, program implementation, and services that are most likely needed to save lives, protect property and the environment, restore essential services and critical infrastructure, and help victims and communities return to normal following domestic incidents.

Overview of EOC Operations

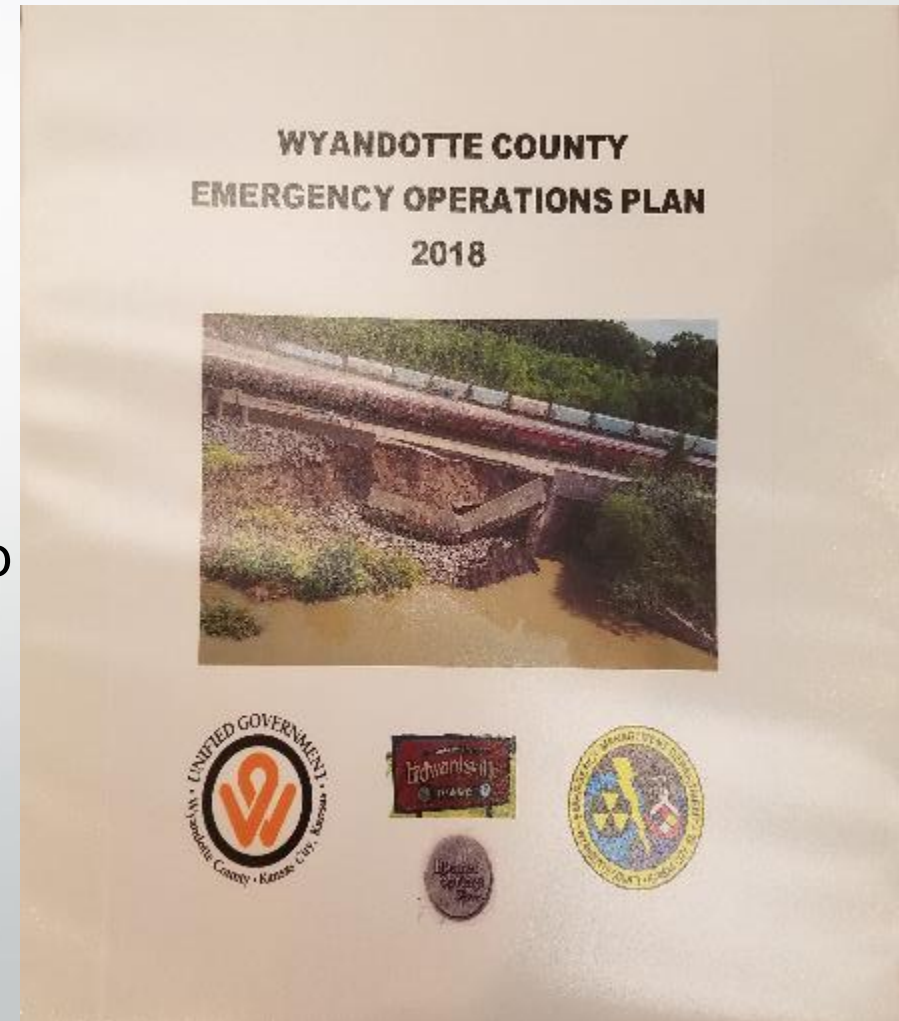
Wy Co EOC
ESF list

Wyandotte County Emergency Support Functions		
EOC Team	ESF Title	Coordinating Agency
ESF #1	Transportation	Public Works Department
ESF #2	Communications	KCK Police Department
ESF #3	Public Works and Engineering	Public Works Department
ESF #4, #9 & #10	Firefighting, Search and Rescue & Oil and Hazardous Materials	KCK Fire Department
ESF #5 & #14	Emergency Management & Assessment, Recovery and Mitigation	Emergency Management & Urban Planning and Land Use
ESF #6	Mass Care, Housing and Human Services	Human Services Department
ESF #7	Ligistics and Resources	Finance Department
ESF #8	Public Health and Medical Services	Public Health Dpeartment
ESF #11	Agriculture and Natural Resources	Wyandotte County Sheriff's Office
ESF #12	Energy and Utilities	Board of Public Utilities
ESF #13	Public Safety and Security	Wyandotte County Sheriff's Office
ESF #15	Public Information and External Communications	Public Relations Department

Overview of EOC Operations

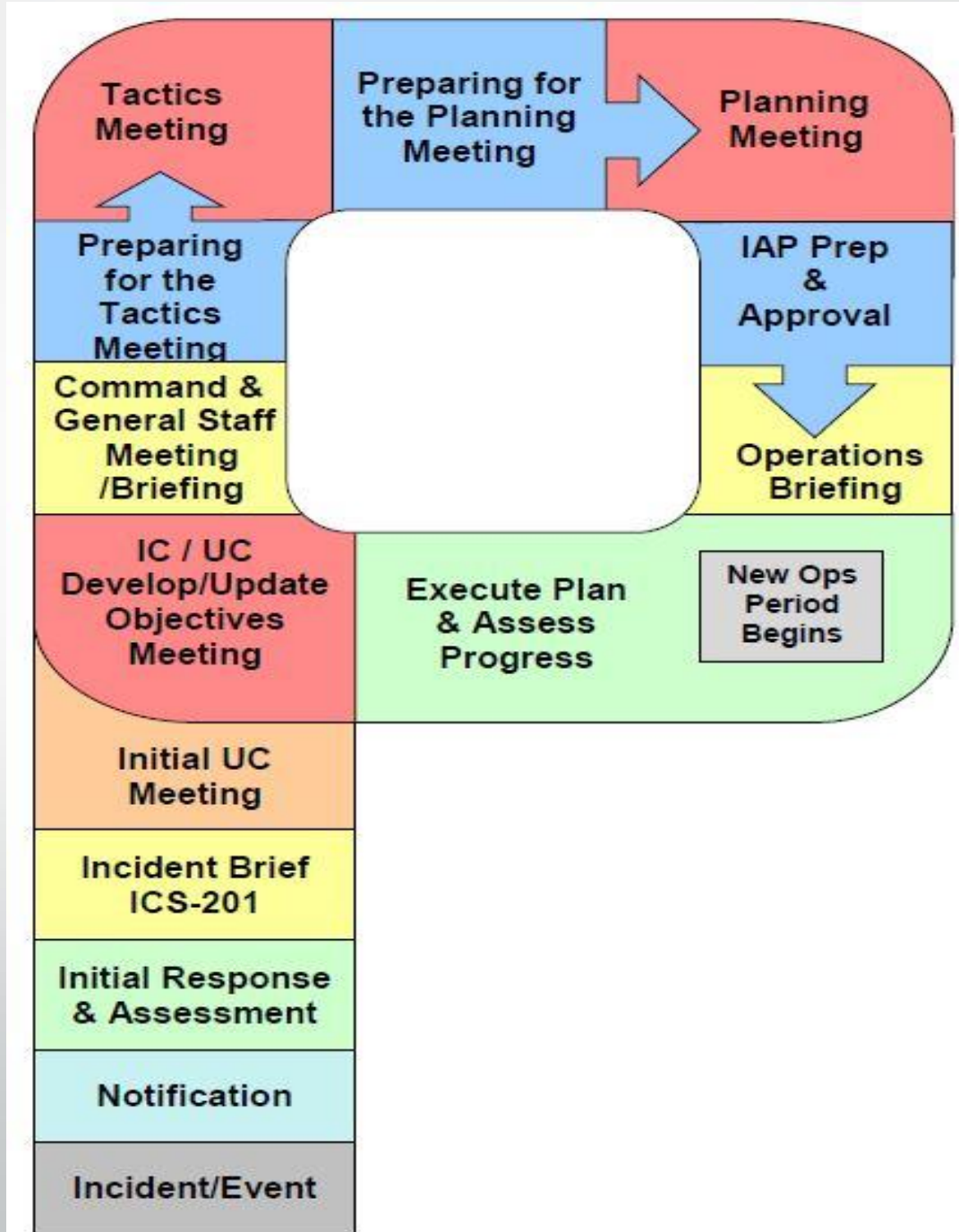
What is an Emergency Support Function?

- County Emergency Operations Plan
- Base Plan and 15 ESF Annexes
- ESF #4, #9 and #10 Annex
- ESF #4, #9 and #10 Operations Guide
- ESF #4, #9 and #10 Job Aid Checklist
- Regional Coordination Guide ESF #4, #9 and #10
- Kansas Response Plan ESF #4, #9 and #10
- Planning P handout
- FEMA EMI Class handout



The Planning P

- Guide to the process and steps involved in planning for an incident.
- The “leg” of the P is the initial response period.
- “Top” of the P is the beginning of the first operational period cycle.
- Operational planning cycle is circular and continuous through out the event.



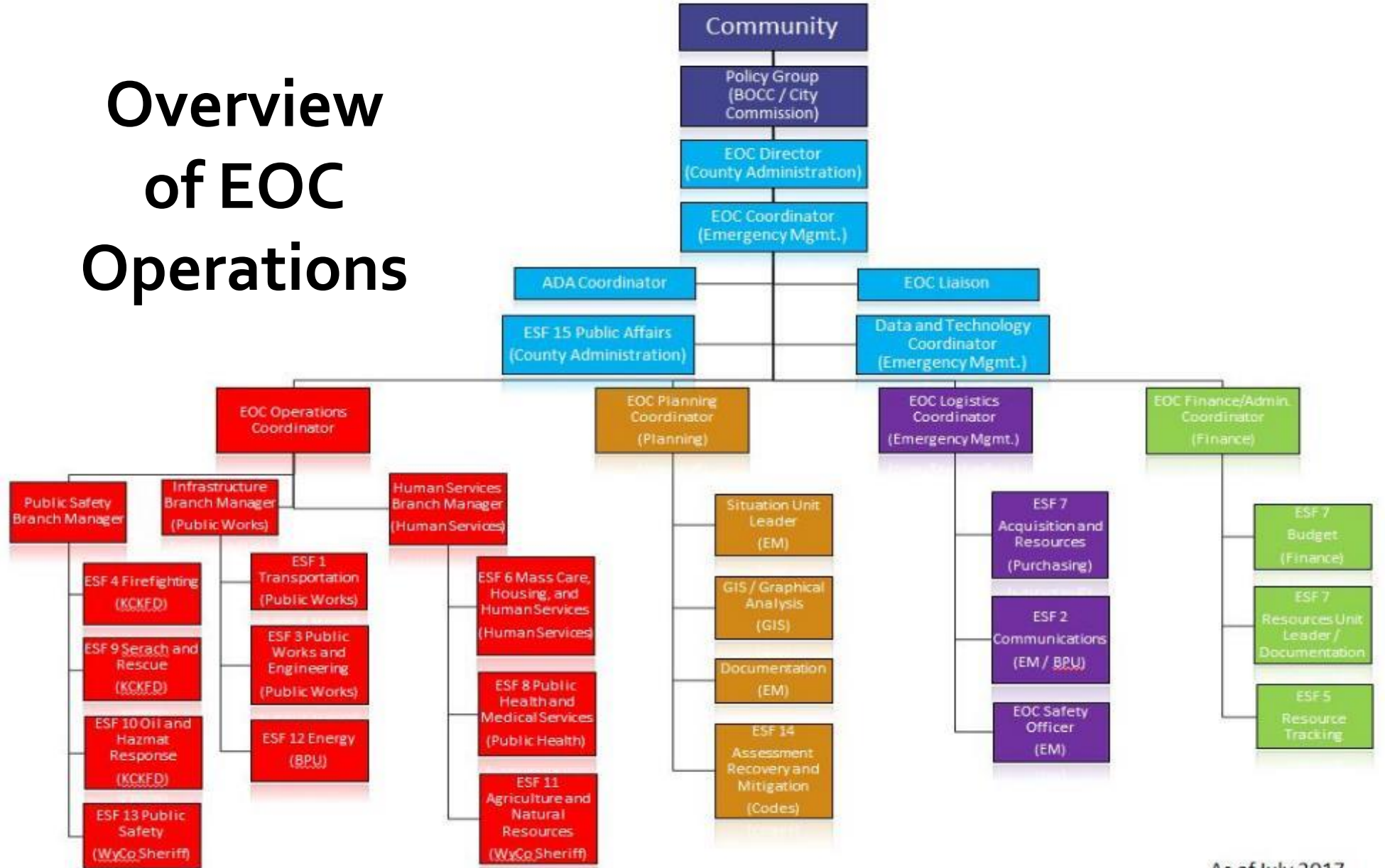
Overview of EOC Operations

Basic Responsibilities in the EOC for
ESF #4 Firefighting, ESF #9 Search and
Rescue and ESF #10 Oil and Hazardous Materials

- Coordinate crews needs and resource management for mutual aid
- Notify and update command staff
- Assist in developing IAP and begin filling out ICS 201, 202 and 204.
- Assist on-scene resources with unit allocations and deployments
- Track patient transport destinations
- Assist in tracking and coordinating radio channel assignments and handle requests for additional channels
- Utilize Web-EOC tool for documenting events and resources

Wyandotte County Emergency Operations Center Organizational Chart

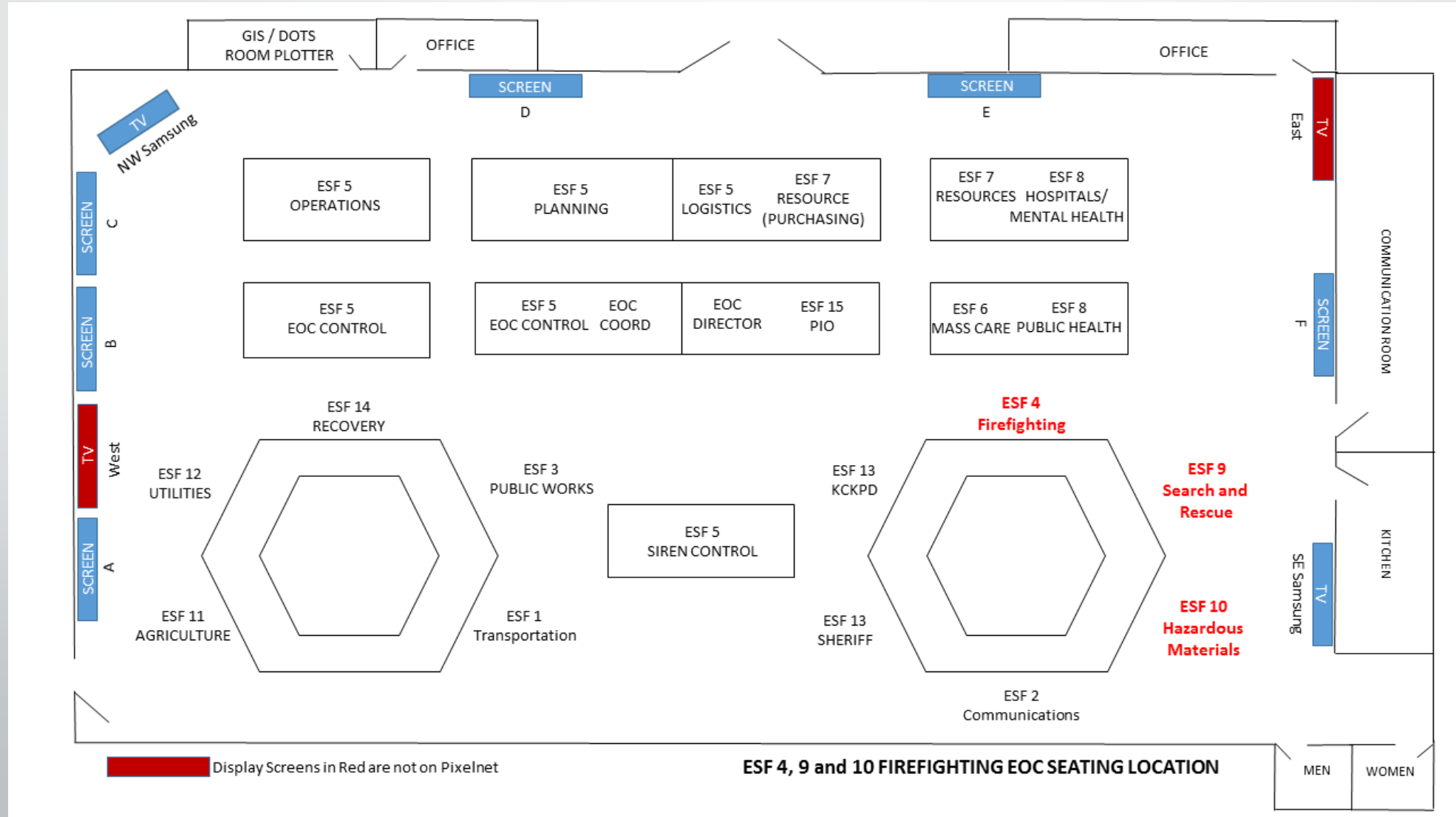
Overview of EOC Operations



Overview of EOC Operations

ESF #4, #9 and #10

EOC Floor Plan



Technology Equipment use in the EOC for ESF #4 Firefighting, ESF #9 Search and Rescue and ESF #10 Oil and Hazardous

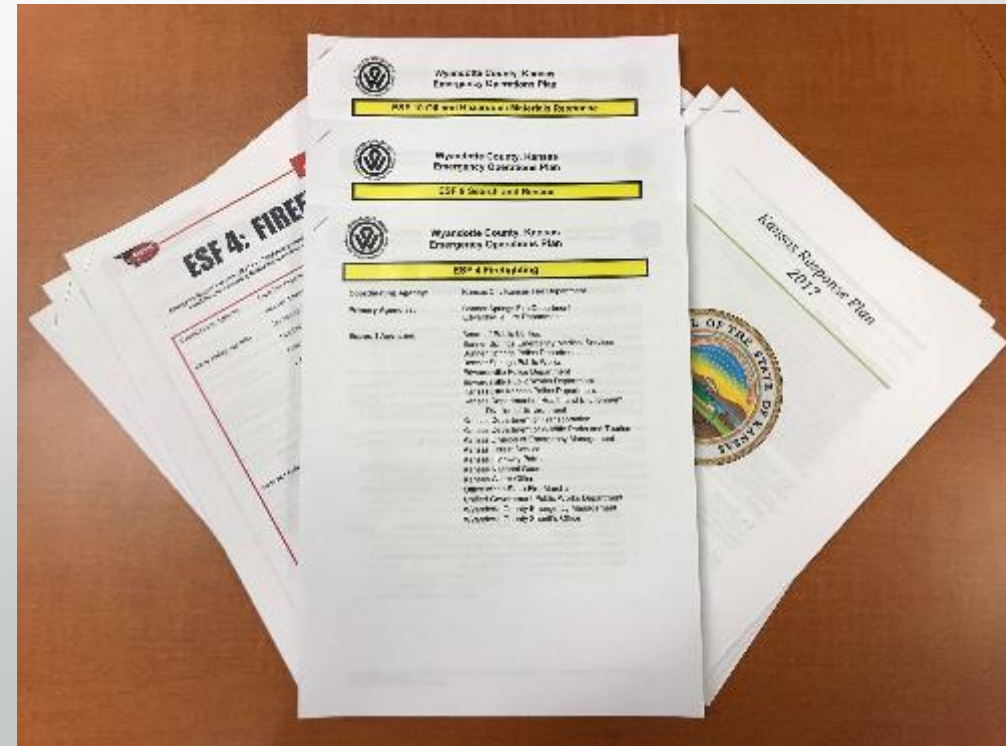
- Radios / Cell phones – Do hand held radios and phones work in the basement of the EOC?
 - Bidirectional Amplifier – Pulls signals from the top of the building and brings them into the below ground areas
 - Fixed Desk Radios – MCS 5000s on the desk are wired to fixed radios in the penthouse. Headsets will be installed soon
- Computer – UG and Fire (PSNet) are on different networks.
 - All EOC responders are welcome to bring any or all devices they want / need. UG wireless (both public and private) are available. Some additional laptops are available if needed.



Annex Review and Update

ESF #4, #9 and #10

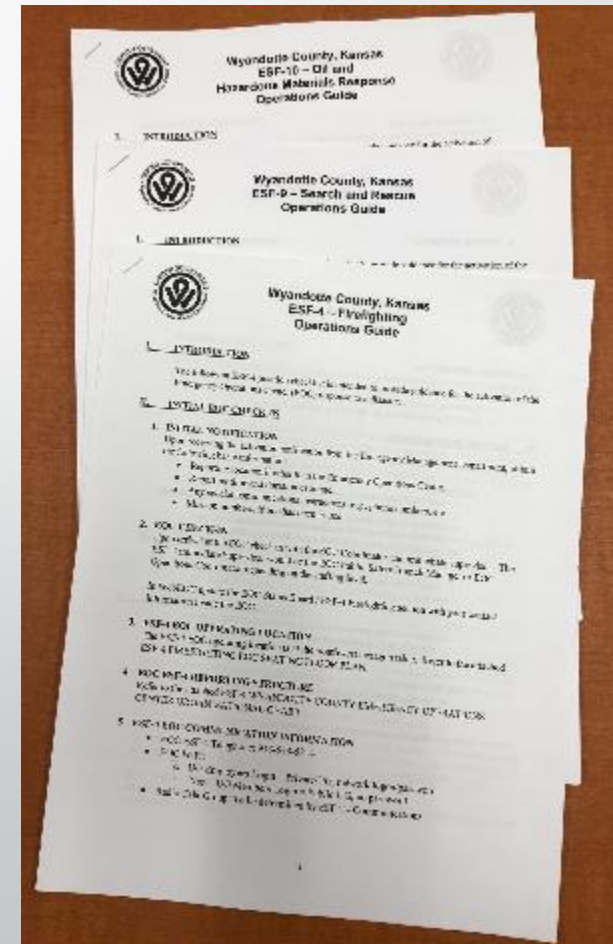
- Changes, Corrections and Updates
 - New members – Action steps
 - Regional Coordination Guide
 - Kansas Response Plan -KRP



Development of the Operations Guide Draft Document Review

ESF #4 Firefighting, ESF #9 Search and Rescue
and ESF #10 Oil and Hazardous

- Additional Content
- Additional Resources
- Additional Considerations

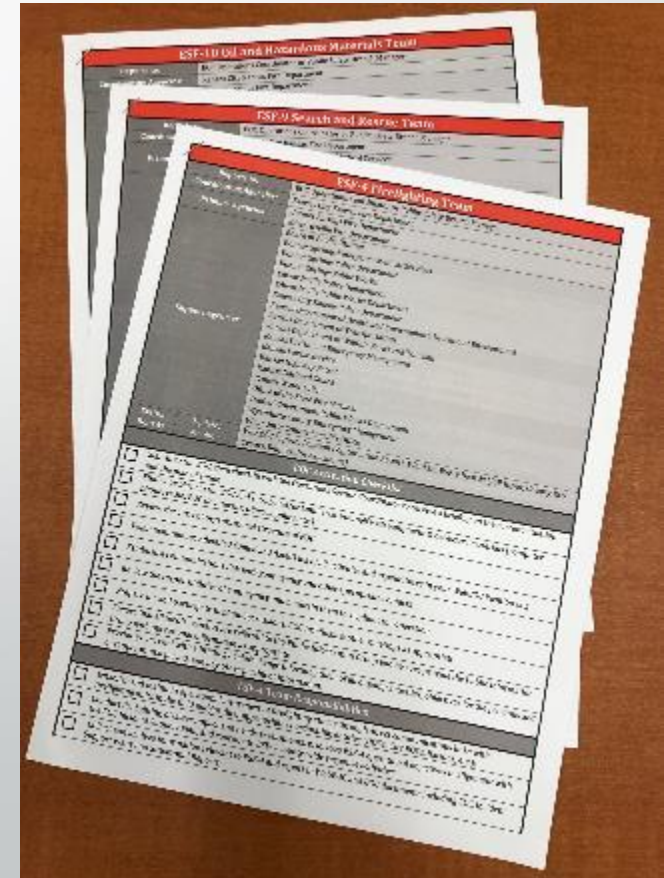


Development of the Job Aid Checklist

Draft Document Review


ESF #4 Firefighting, ESF #9 Search and Rescue
& ESF #10 Oil and Hazardous

- Basic reminders – little detail but references back to Operational Guide
- Try to keep to one sheet, double sided
- Is this format ok?



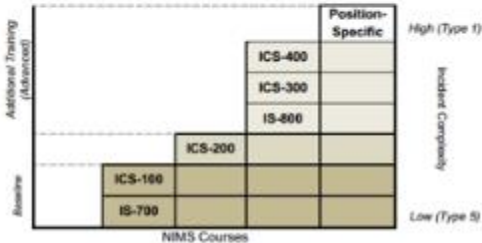
Additional EOC Training

- NIMS Classes:
 - IS 100, IS 200, IS 700, IS 800,
 - IS804, IS809, IS810
 - <https://training.fema.gov/is/>
 - EOC Operations and WebEOC classes
 - Presented in the EOC



Emergency Management Institute

Basic NIMS Class Structure:



Basic NIMS Classes:

- IS-100.B: Introduction to Incident Command System, ICS-100
<https://training.fema.gov/courseoverview.aspx?code=IS-100.b>
- IS-200.B: ICS for Single Resources and Initial Action Incidents
<https://training.fema.gov/courseoverview.aspx?code=IS-200.b>
- IS-700.A: National Incident Management System (NIMS) An Introduction.
<https://training.fema.gov/courseoverview.aspx?code=IS-700.a>
- IS-800.B: National Response Framework, An Introduction
<https://training.fema.gov/courseoverview.aspx?code=IS-800.b>

Classes specific to each Emergency Support Function:

ESF	Course Title	Course ID	Emergency Support Function (ESF) #
01	National Response Framework: An Introduction	(1001001)	
01-01	Emergency Support Function (ESF) #1 - Communications	(1001001)	01-01
01-02	Emergency Support Function (ESF) #2 - Communications	(1001002)	01-02
01-03	Emergency Support Function (ESF) #3 - Public Works and Emergency Services	(1001003)	01-03
01-04	Emergency Support Function (ESF) #4 - Firefighting	(1001004)	01-04
01-05	Emergency Support Function (ESF) #5 - Hazardous Materials Response	(1001005)	01-05
01-06	Emergency Support Function (ESF) #6 - Public Safety and Security	(1001006)	01-06
01-07	Emergency Support Function (ESF) #7 - Agriculture and Natural Resources	(1001007)	01-07
01-08	Emergency Support Function (ESF) #8 - Energy	(1001008)	01-08
01-09	Emergency Support Function (ESF) #9 - Public Safety and Security	(1001009)	01-09

(Note: They do not have classes for ESF 5, 14 & 15)

File Sharing Info and Link will be available soon.

Additional Discussion Points and Topics for Consideration??





Any Other Business?



- Follow up actions
 - Feedback on documents due by 4/25/2018
 - Revised documents back to EOOCR by 4/30/2018

Thank You!!