

Protecting the Castle: New Paradigms in Agriculture Emergency Management

A Shifting Paradigm



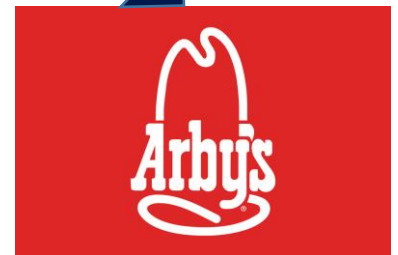
Stamping out alone is likely no longer the primary option for a disease outbreak. Rather, there will likely be a multi-faceted approach to manage through the outbreak.

A Focus on Preparedness & Mitigation

Animal health experts, planners, and industry groups are working to develop real-world plans that can be developed and steps that can be taken for individual operations and producers to lower their risk of becoming infected.



A Whole-Industry Approach

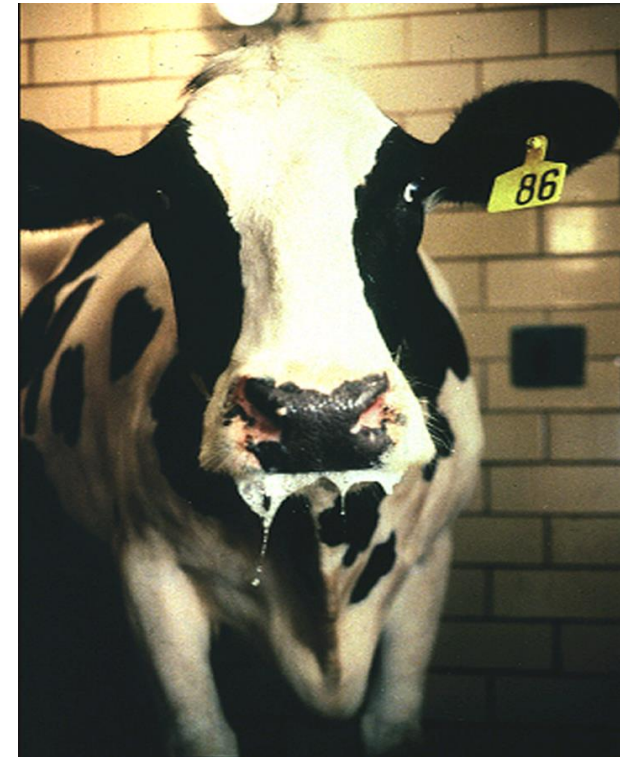


Diseases of Concern

What FAD are we most concerned about in Kansas?

Foot and Mouth Disease

- Affects cattle, hogs, sheep, and other cloven-hooved animals.
- Highly contagious.
- Significantly affect production.
- Will change trade status around the world.
- Not a human health or food safety concern.



Economic Impact

The Revised Risk Assessment for the National Bio and Agro-defense Facility (NBAF) reported potential economic losses of between \$16 billion and \$140 billion from a nationwide FMD outbreak.

- Direct Costs

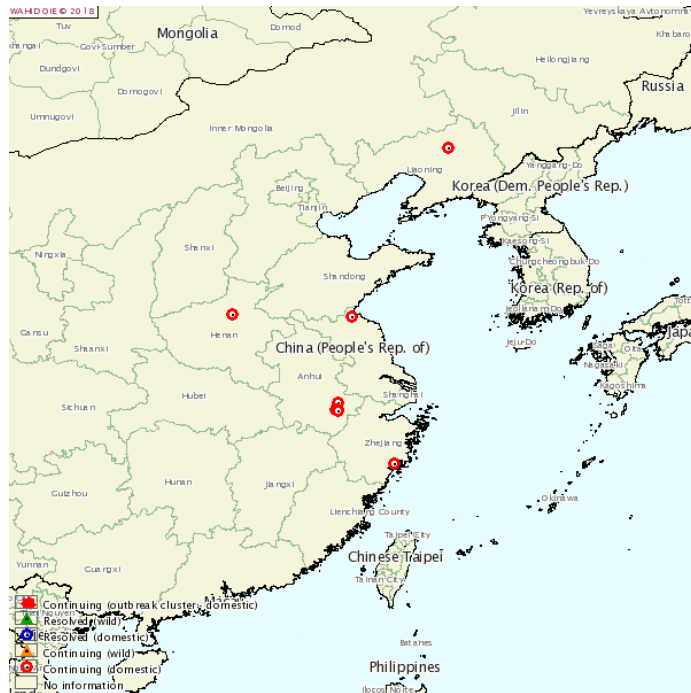
- Indemnity
- Depopulation
- Disposal
- Cleaning and disinfection

- Indirect Costs

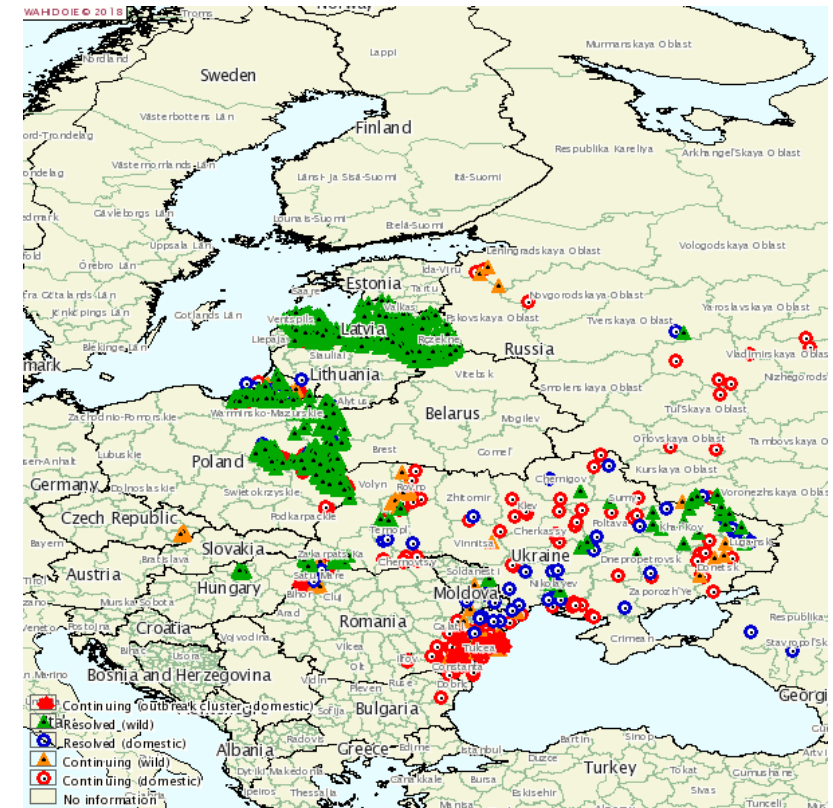
- Exports shutdown
- Lost farm income and taxes
- Consumer confidence/fear

Rising Threats

China and Eastern Europe confirm spreading cases of African Swine Fever.



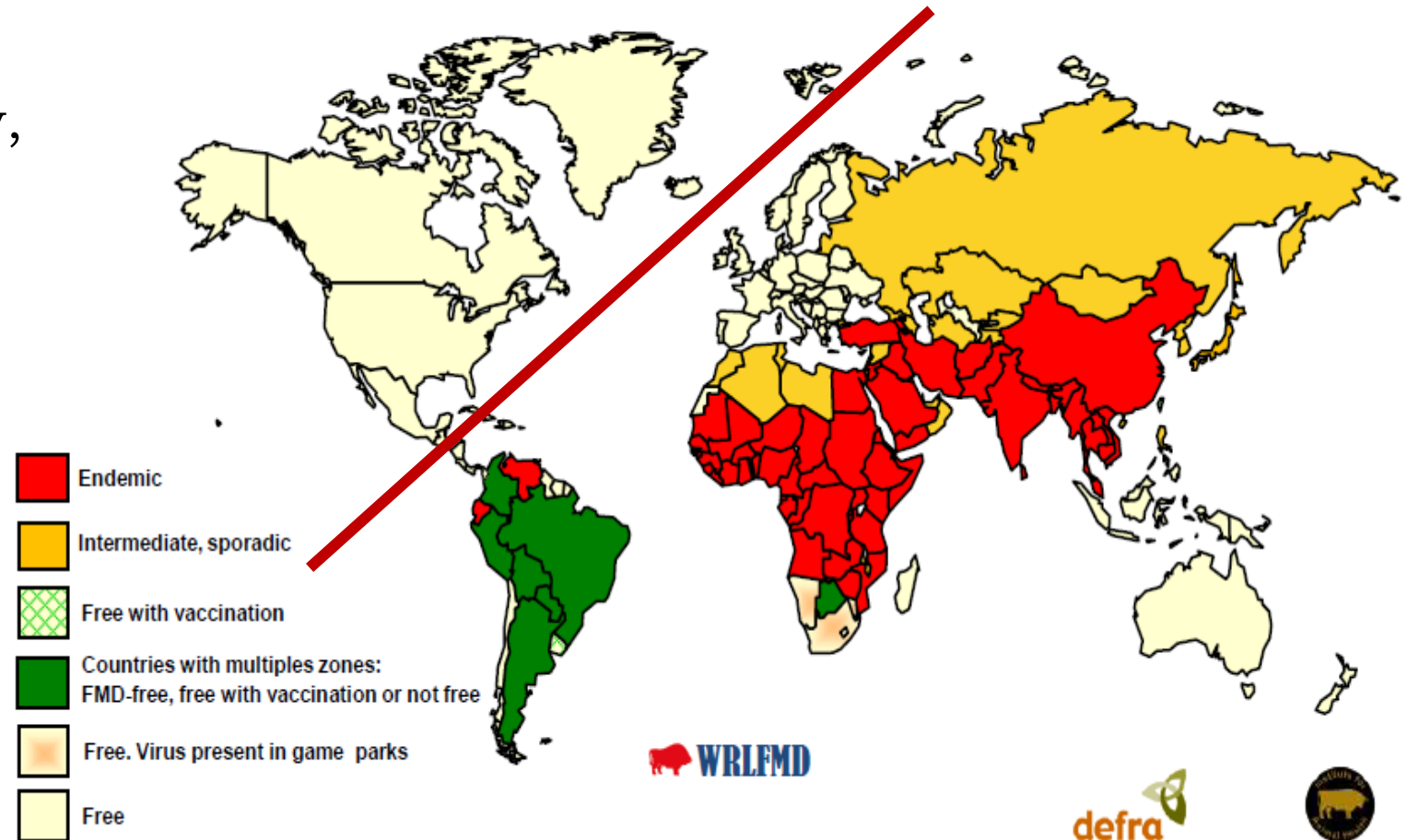
- Some strains of African Swine Fever cause almost 100% mortality.
- The virus is highly contagious, particularly to naïve populations.
- There is no vaccine or treatment.
- The U.S. imports a great deal of feed products for swine from China.



Kansas FAD Response

Why such concern in Kansas?

- Kansas imports livestock daily, both to feed and slaughter.
- Livestock movement from state-to-state on I-70 and other roads.
- Concentration of livestock in dairies, feedlots, and swine facilities.



Challenges with FAD Response

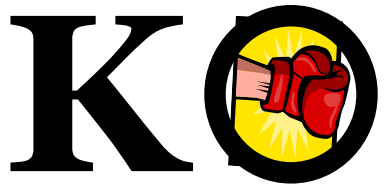
- Unusual response authority
- Low Frequency events
- Complexity/Policy decisions
- Extended timeline
- Geographic scope
- Generally, little impact to human life and property
- Response supports private industry
- Coordination across multiple agencies
- Lack of typed resources/resource packages
- Changing operational periods



KDA Annual IMT Exercise

SAMS

AFTERBURN



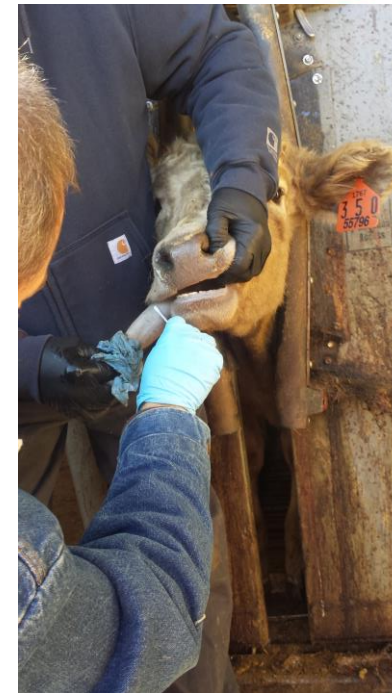
INVISIBLE FIRE



RAMPART

Phoenix Lessons Learned

- Participating in Secure Food Supply Plans is critical for industry
- Social media demands a collaborative approach
- Situational awareness improving – still needs work
- Control Areas are not necessary while a movement order is in place
- Tools developed as a result of previous exercises are helping – but can always be improved
- Our exercises have national implications
- KAERC Volunteers answered the call
- Quarantine Management SOG for counties needs updating



An Updated FAD Response SOG

- This SOG replaces the Quarantine Management SOG issued by KDA in 2013.
- This document is designed to be a template that counties can add as an annex to their existing EOP. Personalize it to match your county's needs and capabilities.
- This will be distributed electronically to all counties following the KEMA Conference.



Standard Operating Guide Template

Animal Health Division

KDA-DAHT-001

Subject: Foreign Animal Disease Response

Scenario #1

A high-consequence foreign animal disease has been detected and confirmed somewhere in North America. No cases have yet been reported in Kansas.



KDA FAD Response – Scenario #1

Upon Presumptive Positive FMD Case in North America (First 24 Hours)

- Mobilize KDA Incident Management Team
- Obtain Governor's declaration of emergency
- Announce stop movement order
- Stand-up border checkpoints
- Inform industry partners
- Activate KDA phone bank
- Coordinate with USDA partners
- Activate State Emergency Operations Center (possibly)
- Notify County EMs via KDEM & Law Enforcement via KHP
- Begin tracing activities



County FAD Response – Scenario #1

Assist with Stop Movement Enforcement

- Brief county leadership and potential response agencies on the situation via meeting or conference call.
 - Suggested attendee list:
 - Local Law Enforcement including Sheriff and local PD
 - Public works
 - Fire Department Representative
 - County Extension Agent
 - Public Health representative
 - Public Information Officer
 - County Executive or County Commissioners
- If the county has a pre-designated border checkpoint, follow the border checkpoint SOP.
- Review the pre-designated emergency off load site for livestock illegally moved within the county. Touch base with the responsible party who will be caring for livestock that must be offloaded at the site.
- Review resource needs for the offload site, particularly C&D materials and feed.
- Share official messaging about the Stop Movement Order via county public information outlets.

County FAD Response – Scenario #1

Secure Food Supply Plan Support

- Livestock operations within your county will begin enacting enhanced biosecurity plans that have been developed through KDA's Secure Food Supply project.
- An operation or facility may contact the Emergency Manager for plan component implementation assistance or resource needs. This will most likely be in the form of:
 - A request to close a county road directly adjacent to susceptible species.
 - Cleaning and disinfection support.
- The EM will work with county, city, or township public works departments, fire departments, and law enforcement to fulfill these requests.
- Premises requesting support from a county are ultimately financially responsible for materials being utilized. Whenever possible, to facilitate support, the EM should work with the facility to find resources that can be purchased or rented. County expenses should be tracked by the EM or their designee to be reimbursed by the operation.

Scenario #2

Cases of a high-consequence foreign animal disease are being suspected or reported within Kansas.

The Kansas Animal Health Commissioner issues a quarantine for a premises located in your county due to a highly likely or confirmed diagnosis.



Kansas FAD Response – Scenario #2

Upon Suspect or Confirmed FMD Case in Kansas

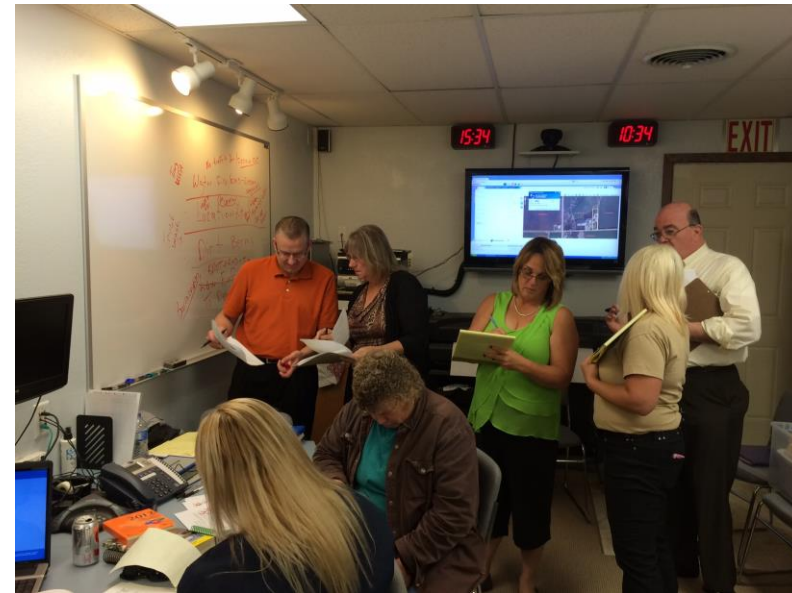
- Dispatch FADD to investigate.
- Issue quarantines as needed.
- Coordinate with local affected jurisdictions for:
 - Resources
 - Traffic Control and Security
- Determine control methodology:
 - Depopulation
 - Vaccination
 - Isolation
 - Combination
- Implement emergency permitting for commodity movements.
- Coordinate release of public information & education.



County FAD Response – Scenario #2

Quarantined Premises Support

- The Foreign Animal Disease Diagnostician on site will serve as a Site Manager/Case Manager for the premises under quarantine. At some point the FADD may be replaced by another assigned KDA or USDA site manager to oversee operation at the quarantine facility.
- The County EM partially activates the county EOC with representation from the following personnel or agencies (suggested):
 - Law enforcement
 - Public works
 - Fire
 - County Extension Agent
 - Public Health
 - PIO
 - KDOT Supervisor
 - KDA Community Liaison Officer
- The Site Manager will work the premises leadership and the KDA IMT Operations Section to identify needed resources.



County FAD Response – Scenario #2

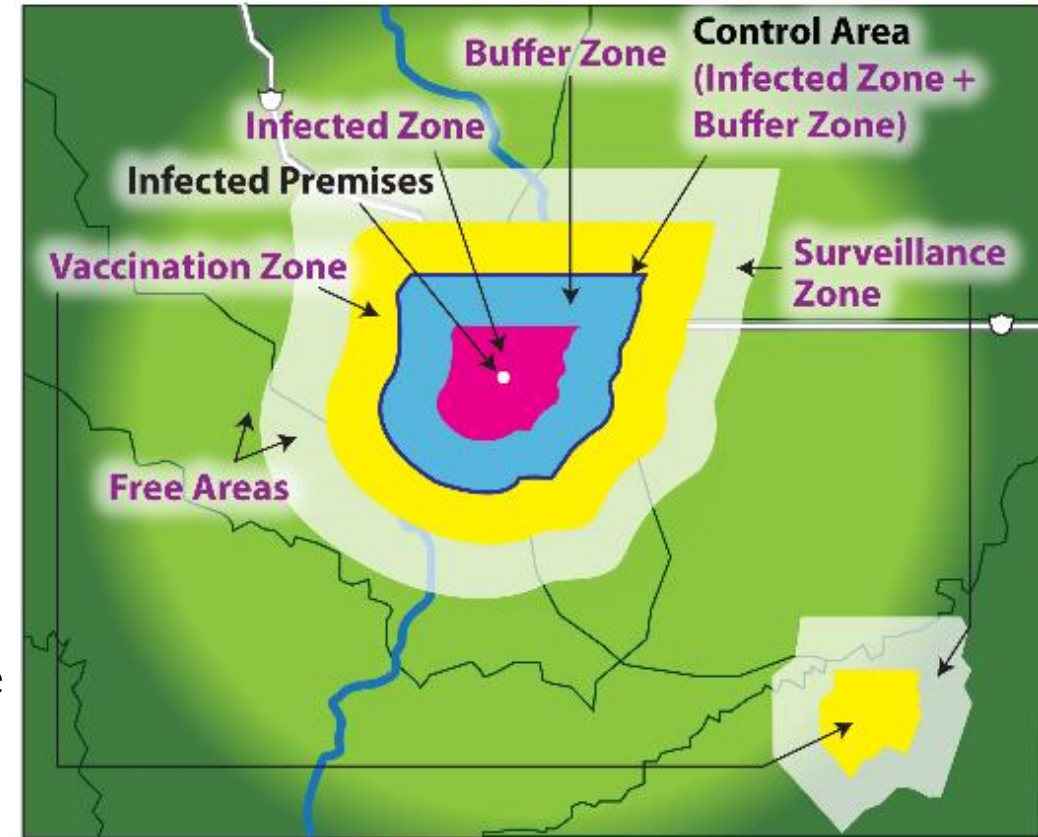
Quarantined Premises Support

- County resources that are available to assist with quarantine management at the infected premises should be communicated by AREPS to the LOFR. These resources will be communicated to the Resource Unit Leader to be potentially utilized by the OPS Section.
- Once a resource is identified as needed, the request and assignment will be delivered to EOC personnel by the LOFR.
- Common resource needs may include:
 - C&D Support
 - Road closed immediately adjacent to the infected premises.
 - 24-hour site security
 - Depopulation and disposal support
 - Portable Lavatories, food, water, or other personnel support
- The County PIO will work with the LOFR and KDA PIO to ensure that consistent messaging is taking place and to facilitate media needs or requests. Additional public information support can be requested through the LOFR.

County FAD Response – Scenario #2

Control Area Planning and Staffing

- GIS personnel from KDA or KDEM, as part of the Contingency Planning Branch of the KDA IMT Planning Section, will delineate the Control Area, outlining roads that need to be closed or rerouted.
- SEOC Personnel will work with the Planning Section to identify locations to establish traffic control points.
- Based on the location and number of traffic control points, SEOC personnel will determine personnel and resources needed to staff each control point. Local resource needs will be coordinated through the County EOC.
- The Control Area traffic control points will only be stood up after the statewide stop movement order has been lifted.



County FAD Response – Scenario #2

Control Area Planning and Staffing

- If the stop movement order is lifted, enact the traffic control points.
- Assign available staff to checkpoints and collect their information on the ICS 211 form. Give the completed 211 form to the LOFR to be sent to the ICP.
- Conduct a safety briefing for all checkpoint workers.
- Communicate additional resource needs through the LOFR to the ICP.
- Draft media releases regarding traffic control checkpoints for your jurisdiction. Coordinate with the KDA PIO prior to media release. Points to address:
 - Location of checkpoints or detours.
 - Helpful hints for travelers in and out of the control area.



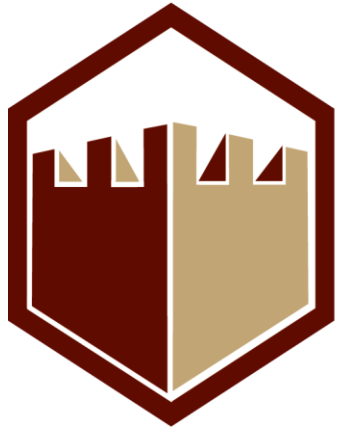
KDA Emergency Management

The Kansas Department of Agriculture is committed to a goal of being the most prepared state in the nation to respond to a high-consequence foreign animal disease outbreak.

Ongoing projects to meet this goal:

- KDA annual functional exercise
- Livestock Biosecurity Project
- Kansas Agriculture Emergency Response Corps
 - Community Liaison Project
- Cattle Trace Pilot Project
- Other Emergency Response Projects

2018 Functional Exercise



RAMPART

**Kansas Department of Agriculture – 2018 Foreign
Animal Disease Exercise**

December 17th -20th

Participants

- KDA
- USDA-APHIS
- KSU (NABC, KSRE, Vet School)
- KDEM
- KDOT
- KHP
- KDHE
- KDWPT
- Counties
- USDA Riverdale
- Industry Groups (KLA, KFB, etc.)
- Packers (National Beef, Cargill, etc.)
- Feedlots/Dairies/Swine Producers
- Volunteer Corps Members
- Food Retailers
- Pet Food Manufacturers
- National Weather Service
- Other States

Kansas Secure Food Supply Project

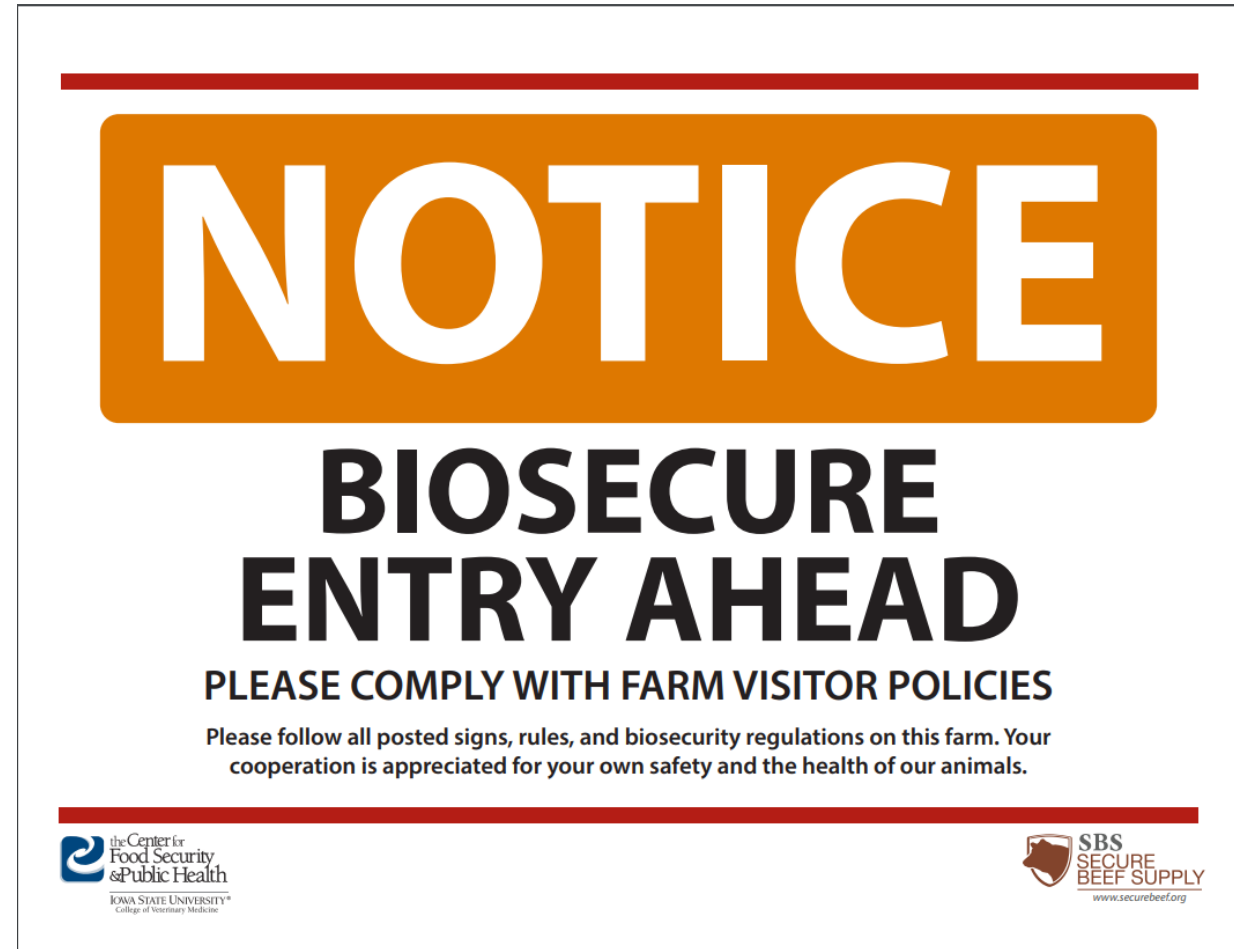
The goals of the KS SFS Project are to:

- Support the economic viability of the Kansas Livestock Industry during and after an FMD or FAD outbreak
- Provide guidance to reduce disease spread throughout livestock sectors
- Communicate biosecurity standards between state officials to allow for animal movement across state borders during an FMD outbreak



Key Plan Components

- Compose and Implement an Enhanced Biosecurity Plan
- Establish a Line of Separation
- Facilitate Employee Training
- Keep Plan-Related Records
- Exercise the Plan
- Participate in a Yearly Audit




A graphic of a biosecurity notice sign. At the top, the word "NOTICE" is written in large, white, bold, sans-serif capital letters inside a rounded orange rectangle. Below this, the words "BIOSECURE" and "ENTRY AHEAD" are written in large, bold, black, sans-serif capital letters. Underneath, the text "PLEASE COMPLY WITH FARM VISITOR POLICIES" is written in a smaller, bold, black, sans-serif font. A line of smaller text reads: "Please follow all posted signs, rules, and biosecurity regulations on this farm. Your cooperation is appreciated for your own safety and the health of our animals." At the bottom left, there is a logo for "the Center for Food Security & Public Health" with "IOWA STATE UNIVERSITY" and "College of Veterinary Medicine" below it. At the bottom right, there is a logo for "SBS SECURE BEEF SUPPLY" with "www.securebeef.org" below it.


NOTICE

**BIOSECURE
ENTRY AHEAD**

PLEASE COMPLY WITH FARM VISITOR POLICIES

Please follow all posted signs, rules, and biosecurity regulations on this farm. Your cooperation is appreciated for your own safety and the health of our animals.

 the Center for
Food Security
& Public Health
IOWA STATE UNIVERSITY*
College of Veterinary Medicine

 SBS
SECURE
BEEF SUPPLY
www.securebeef.org

Line of Separation

Example LOS

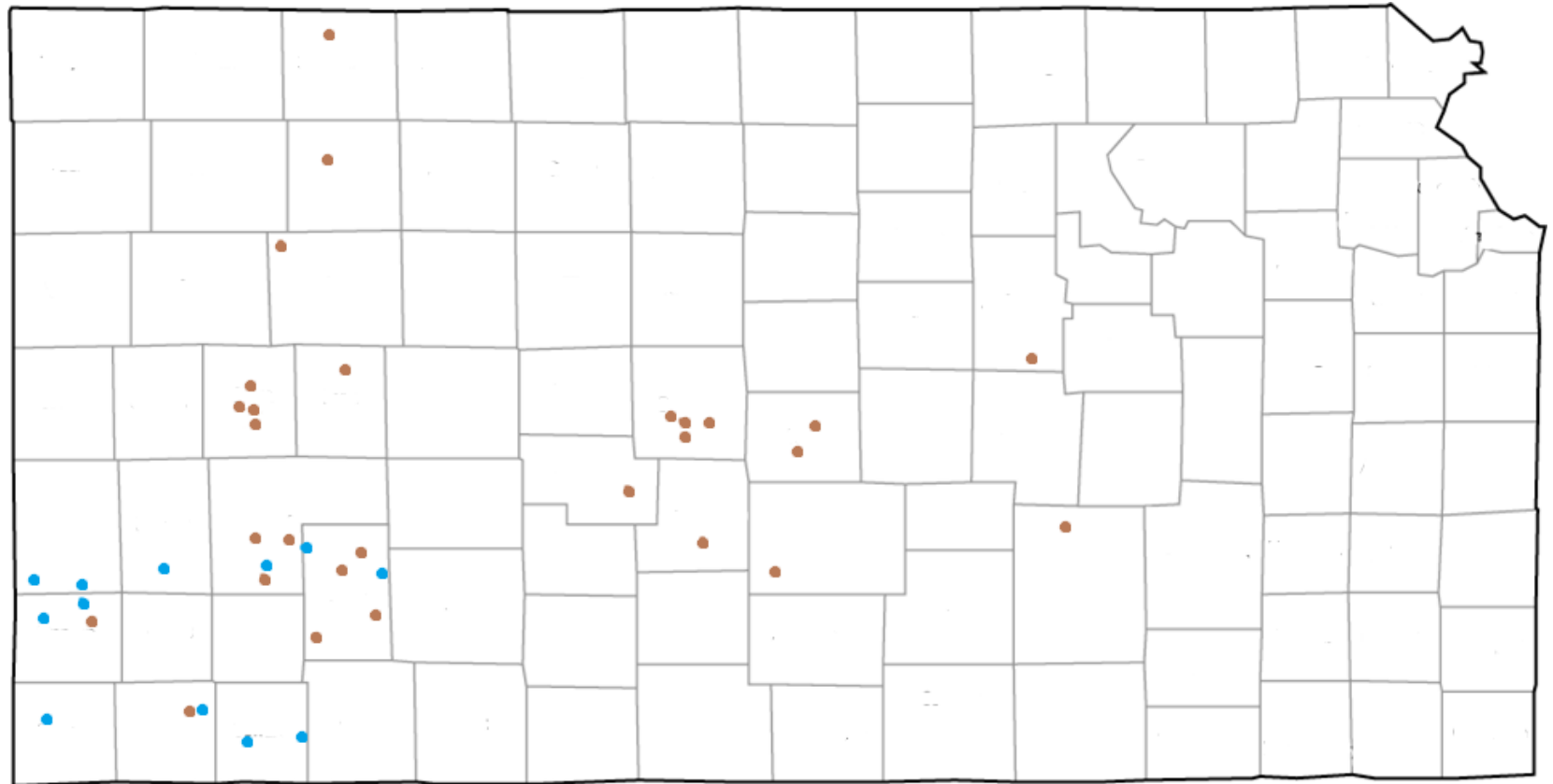
- Minimize access points and keep cattle protected
 - Allow for milk trucks to enter, load, and exit
 - Employee Parking outside LOS
 - Designate Cleaning & Disinfection Stations
 - Manage Daily Mortality
 - Determine Feed Needs



SFS Progress

To Date – Plans Completed and/or in progress

- 16 Dairies
- 30 Feedlots
- 13 Sow Units
- 18 Nurseries
- 23 Finishers
- Upland Gamebirds



SFS Next Steps

- Producer outreach and education.
- Coordination with packers and retailers.
- Regionalization of plans and permitting.
- Exercising and auditing of plans.
- Full-time planner being hired Fall 2018.
- Secure Beef Supply guidance for cow-calf and stocker operations is expected in late 2018 or early 2019.



Volunteer Corps

The Kansas Agriculture Emergency Response Corps is developed and maintained by the Kansas Department of Agriculture to utilize the skills, expertise, and passion of Kansans to assist state and federal staff in responding to agricultural incidents.



Additional Information

The image shows a person from behind, wearing a white cowboy hat with a decorative band and a green shirt. They are standing in a grassy field with trees in the background. Overlaid on the image is the logo for the Kansas Agriculture Emergency Response Corps. The logo is circular with a sunburst at the top and a green field at the bottom. The word "KANSAS" is written in white on a dark red banner across the center. The text "Agriculture Emergency" is at the top and "Response Corps" is at the bottom of the circle.

The Kansas Agriculture Emergency Response Corps is developed and managed by the Kansas Department of Agriculture to utilize the skills, expertise, and passion of Kansans to assist state and federal staff in responding to agricultural incidents.

During a large-scale incident, the limited state and federal staff cannot fill all necessary roles; therefore, the Kansas Department of Agriculture is looking to utilize the community and their wide range of skills. The response corps will be composed of volunteers who will be trained and prepared to respond rapidly and efficiently to an agricultural incident.

[KansasAgResponse.org](https://www.KansasAgResponse.org)

Animal Disease Traceability Pilot Project



www.CattleTrace.org

- In Collaboration with:



BEEF CATTLE INSTITUTE
KANSAS STATE UNIVERSITY



New Emergency Response Projects

- The Division of Animal Health has agreed to provide preventative care for Kansas Search and Rescue K9 units through an agreement with the State Fire Marshall's Office.
- Emergency Management personnel have begun serving as trainers and advisors in cooperation with the Kansas State Animal Response Team for sheltering companion animals post-disaster.





Questions?